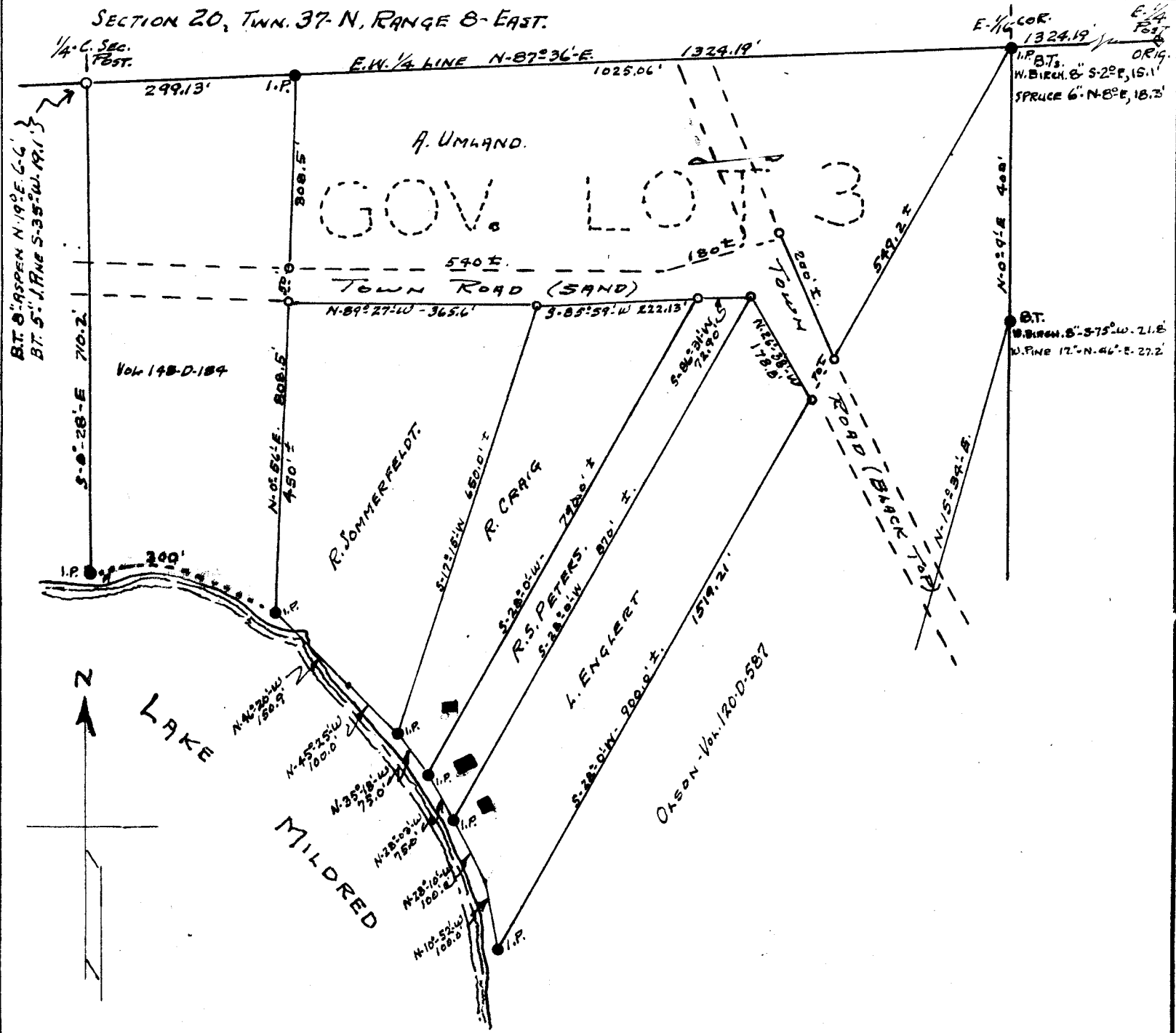


1945

SECTION 20, TOWN 37-N, RANGE 8-EAST.



1945

RECEIVED & FILED # **1945**
 Onida County Surveyor's Office
 Date **JUL 03 1945**
 By *MNR*
 OCS Area #

JOB NO. 5162		DISC. SURVEY OF PART OF GOV. LOT 3, SECTION 20, TOWNSHIP 37-NORTH, RANGE 8-EAST.	
REVISIONS		FOR JOHN W. KRUEGER	
		ATTORNEY AT LAW.	
NO.	DATE	BY	WISCONSIN
A	9/10/59	<i>NMR</i>	
DR. NMR		DATE 8/26/59	ROWINSKI ENGINEERING CO. N. M. ROWINSKI, REG. PROF. ENGINEER RHINELANDER WISCONSIN
DATE 8/26/59		DWG. NO. 5162	