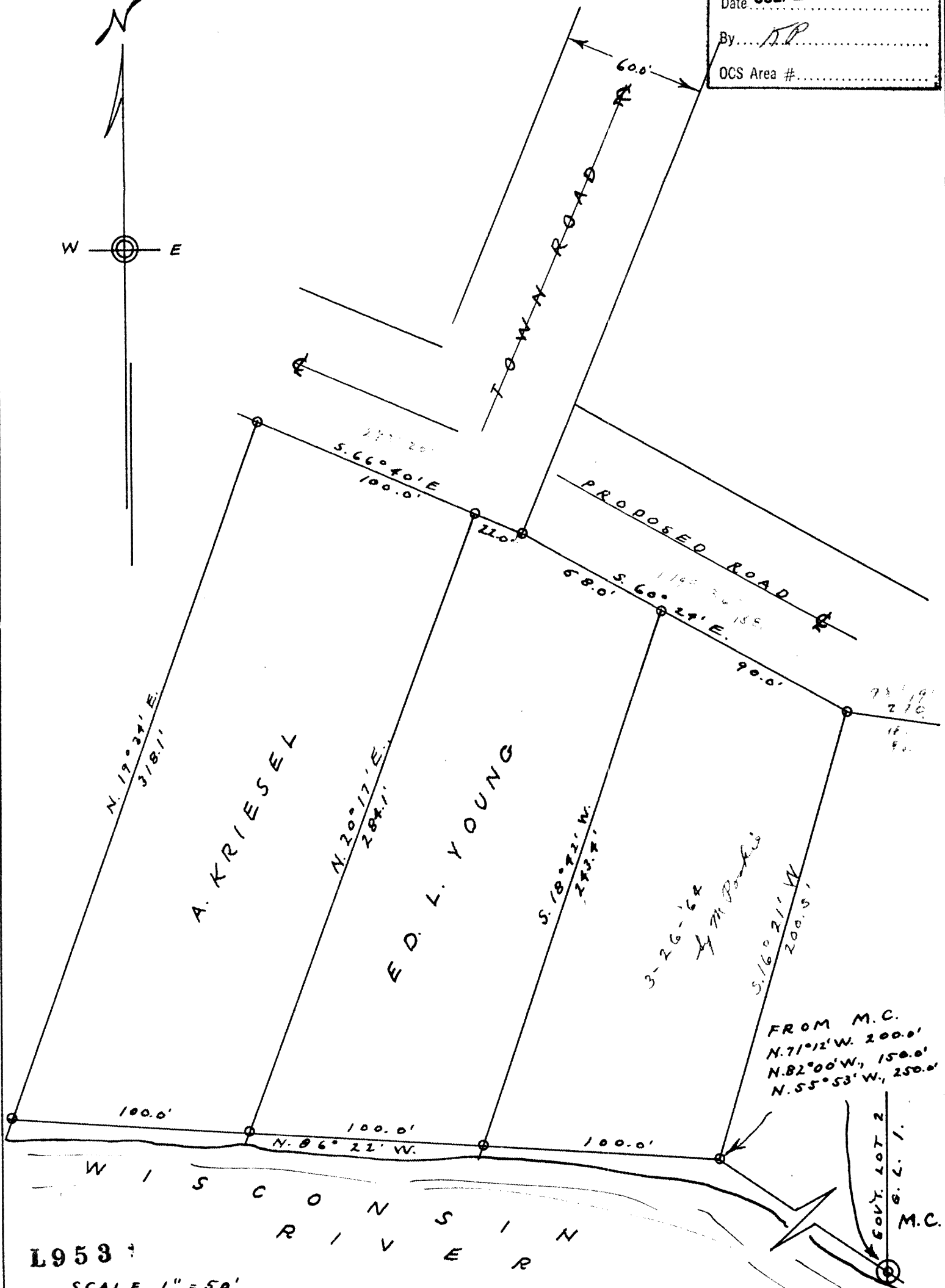
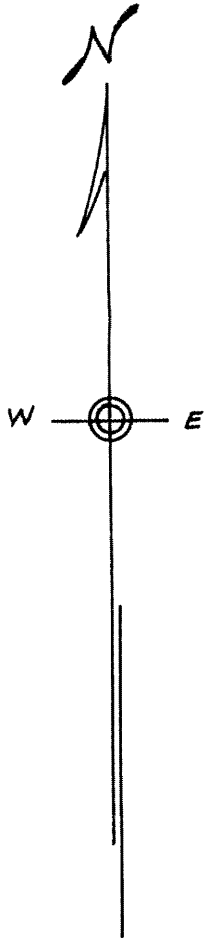


L953

SURVEY MAP FOR EDWARD L. YOUNG IN GOV'T. LOT 2, SEC. 15, T. 37 N., R. 8 E., ONEIDA COUNTY, WISCONSIN.

RECEIVED & FILED # **L953**
 Oneida County Surveyor's Office
 Date **JUL 25 1989**
 By *MP*
 OCS Area #



L953

SCALE 1" = 50'
 IRON PIPE
 DATED 7-5-'63

By M. Poehle

WIS 5-140

L953