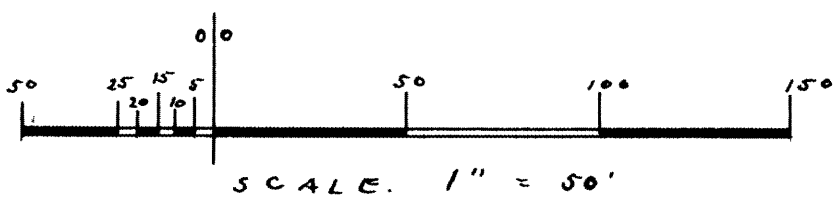
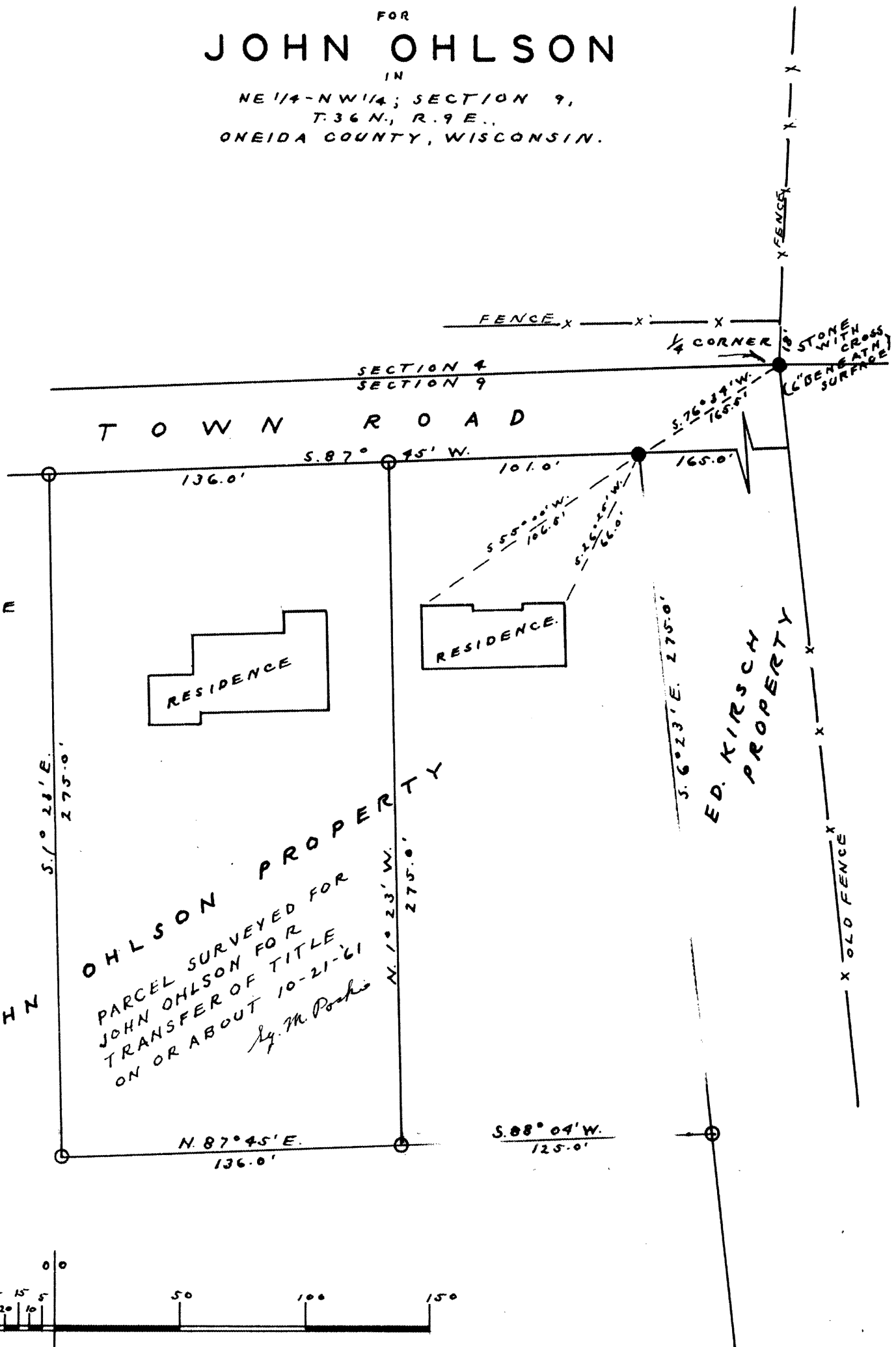
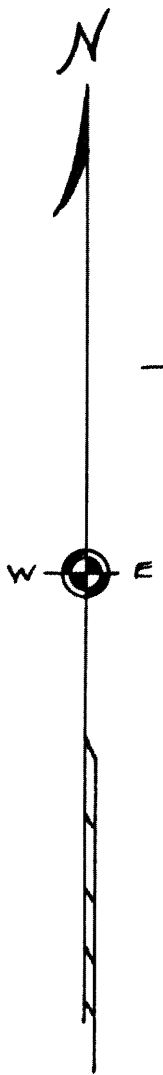


L964

RECEIVED & FILED **L964**
 Oneida County Surveyor's Office
 Date **JUL 25 1968**
 By *JTP*
 OCS Area #.....

SURVEY
 FOR
JOHN OHLSON

IN
 NE 1/4-NW 1/4; SECTION 9,
 T.36 N., R.9 E.,
 ONEIDA COUNTY, WISCONSIN.



L964

DATED 10-29-61

By M. Poshie
 WIS 5-140

L964