

1965

RECEIVED & FILED # 4965

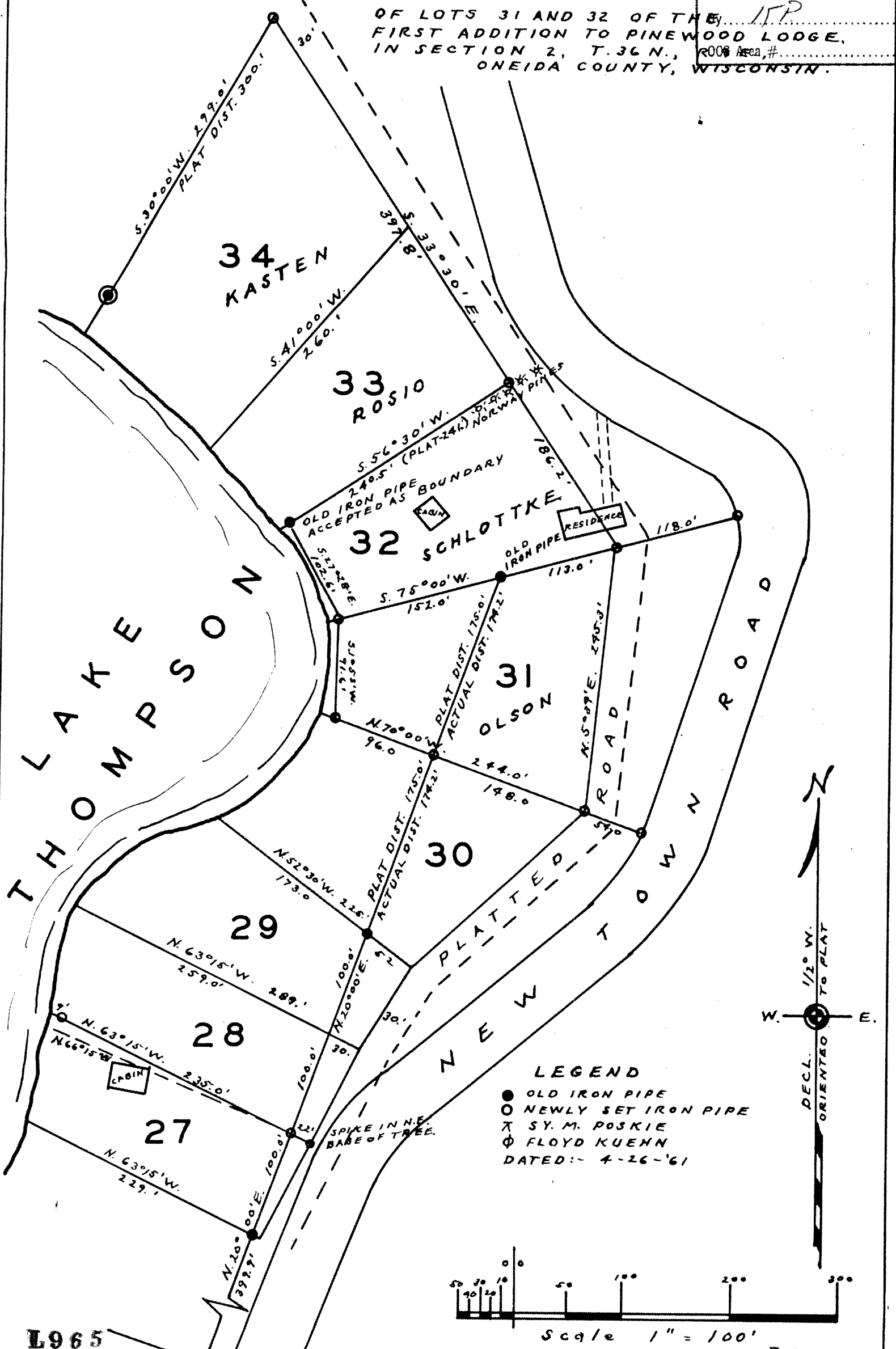
# SURVEY FOR ED. W. SCHLOTTKE

Oneida County Surveyor's Office

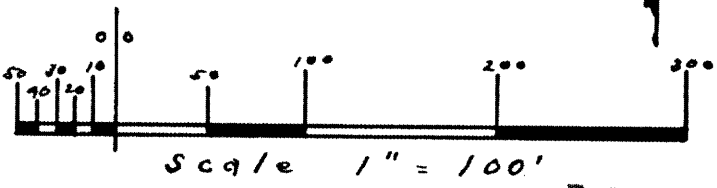
Date JUL 25 1966

By ITP  
R008 Area #

OF LOTS 31 AND 32 OF THE FIRST ADDITION TO PINWOOD LODGE, IN SECTION 2, T.36 N., ONEIDA COUNTY, WISCONSIN.



- LEGEND**
- OLD IRON PIPE
  - NEWLY SET IRON PIPE
  - ⋈ SY. M. POSKIE
  - ⊕ FLOYD KUENN
- DATED: 4-26-61



L965

L965