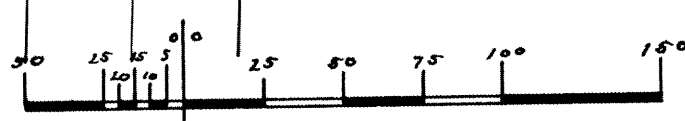
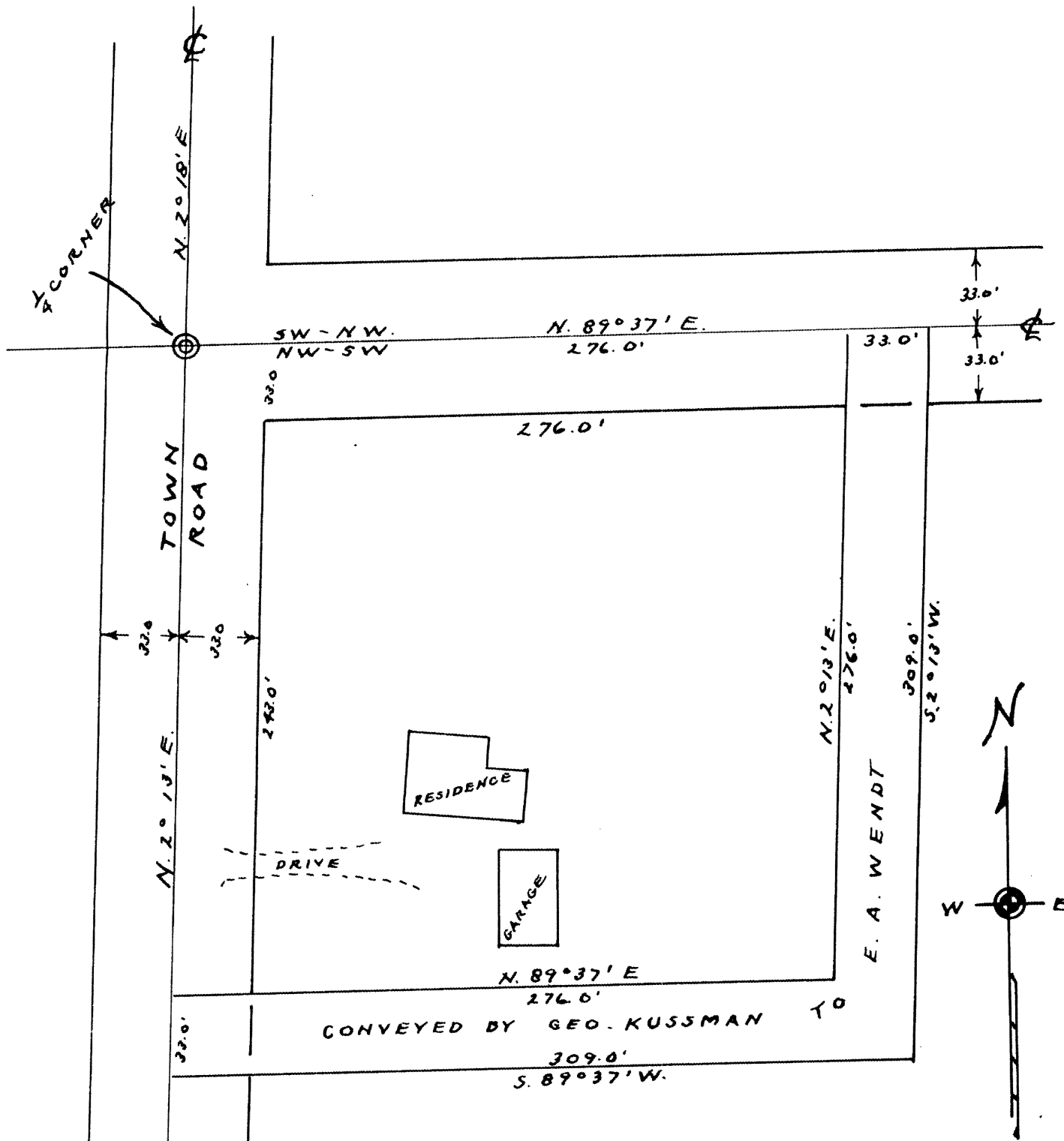


1968

RECEIVED & FILED **L968**
 Oneida County Surveyor's Office
 Date **JUL 25 1968**
 By *AP*
 OCS Area #

SURVEY MAP FOR ERVIN A. WENDT

IN
 THE NW¹/₄-SW¹/₄, SEC. 21, T.35N., R.10E.
 ONEIDA COUNTY, WISCONSIN.



SCALE 1" = 60'

BASED ON SURVEY OF
 FOREST WINCENTSEN
 FOR BEN J. WALDSCHMIDT.

Sy. M. Poskie

WIS # 5-140

0-28-1964

L968

L968