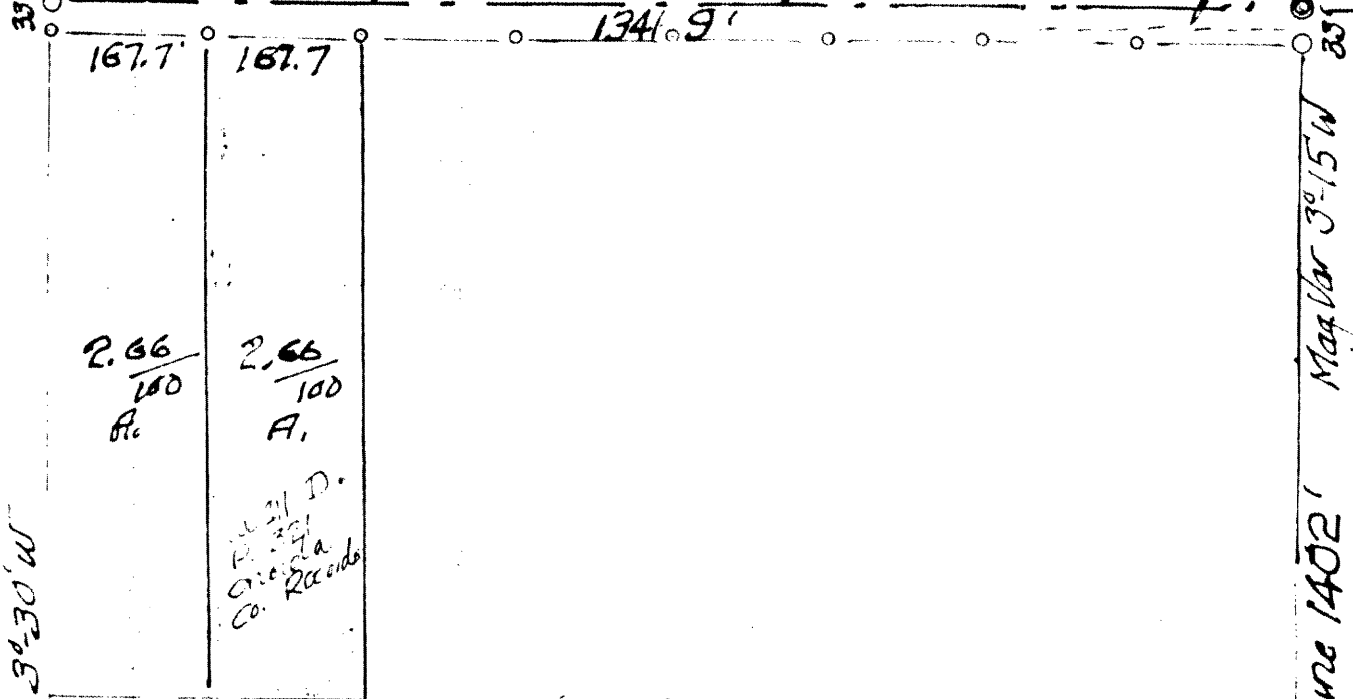


L971

RECEIVED & FILED # **L97**
 Oneida County Surveyor Office
 Date **JUL 25 1989**
 By *K.P.*
 OCS Area #

N. E. 1/4 of N. E. 1/4 Section 5 Trip 36 N. R. 9 E.

1/8 J. Mag Var 2 3/5 E TOWN LINE HARVEY ST. ROAD SEC. COR.



William

South half here to fore sold.

Subd. 200
1/4 Sec 5
April 8 1925

1 16.5. Mag. Var. 2 1/2 E. 1330.95' 1 85.

L971

L971