

L973

RECEIVED & FILED # L973

Oneida County Surveyor's Office

Date JUL 2 1972

By [Signature]

OCS Area [Signature]

# SURVEY FOR M. W.M. RICHTER

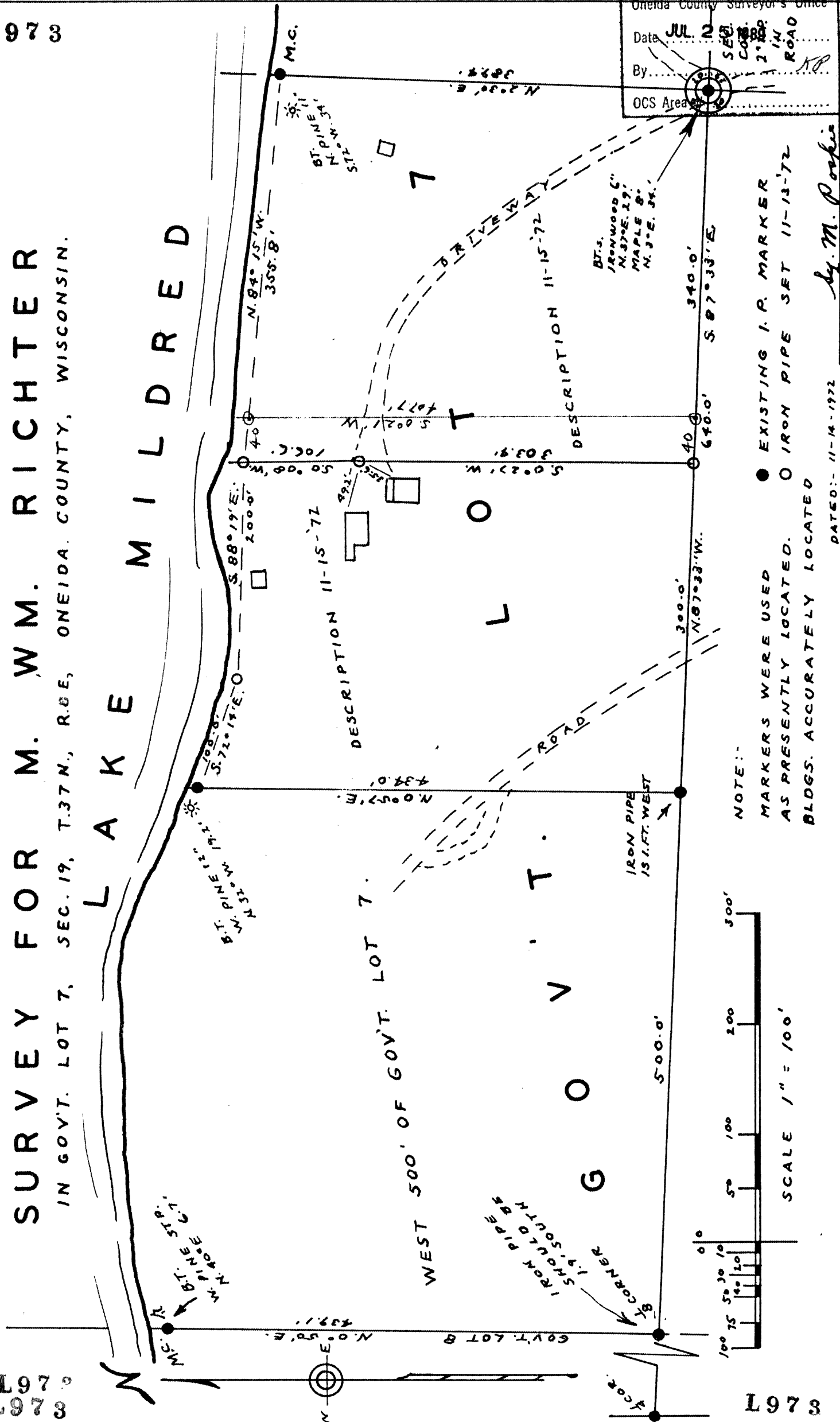
IN GOV'T. LOT 7, SEC. 19, T.37N., R.8E, ONEIDA COUNTY, WISCONSIN.

## L A K E M I L D R E D

## G O V ' T . L O T 7 .

L973  
L973

L973



NOTE:  
 MARKERS WERE USED  
 AS PRESENTLY LOCATED. O IRON PIPE SET 11-13-72  
 BLOGS. ACCURATELY LOCATED

DATE: 11-14-1972  
 By M. Pookie  
 WIS W 5-190