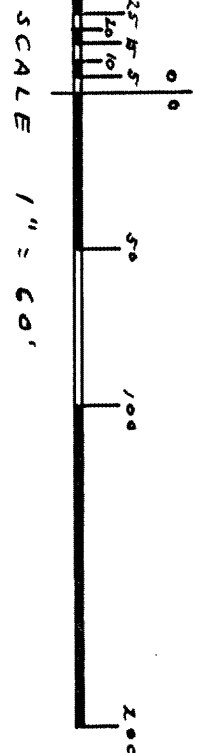
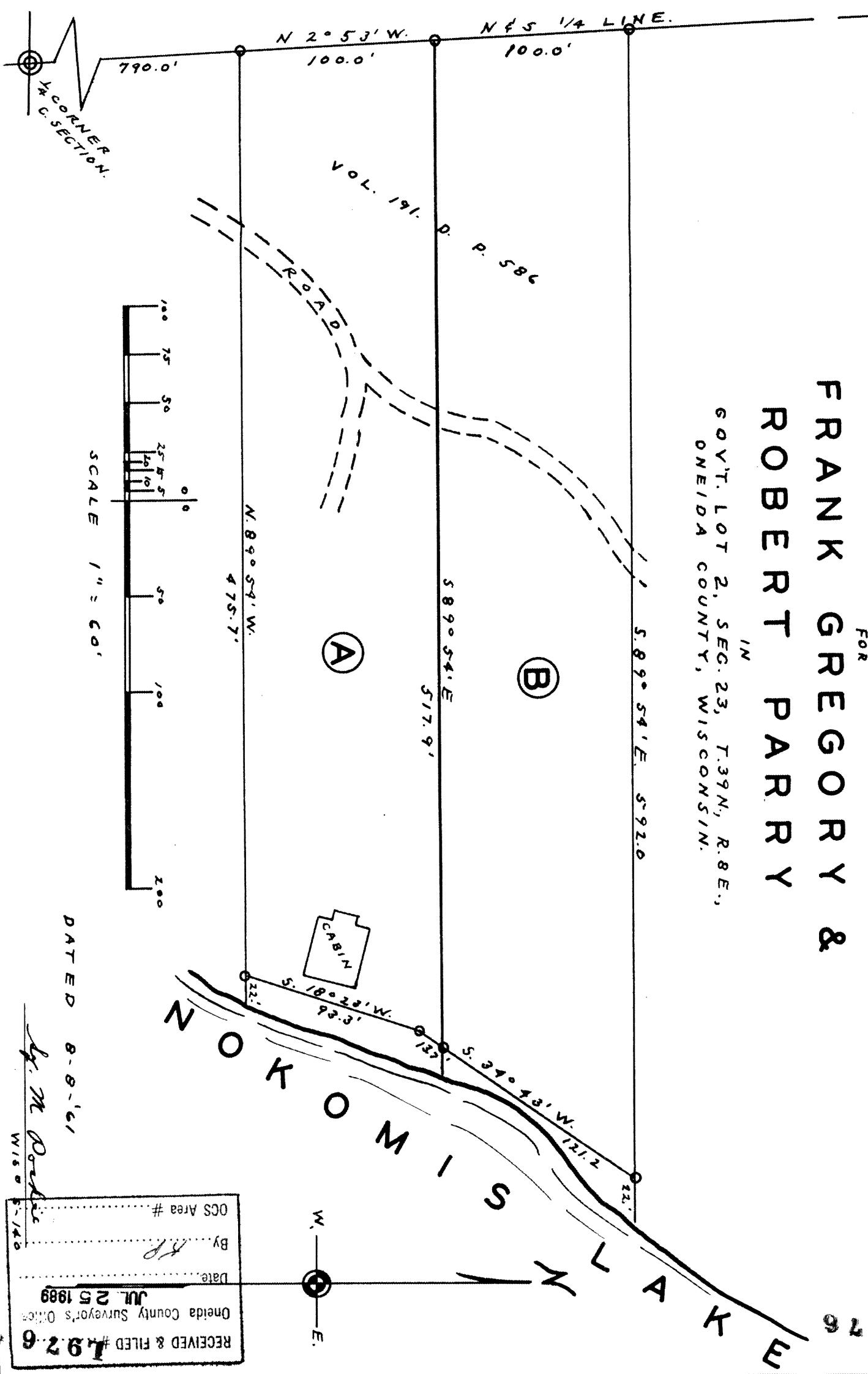


SURVEY
 FOR
FRANK GREGORY &
ROBERT PARRY
 IN
 GOV'T. LOT 2, SEC. 23, T. 39N., R. 8E.,
 ONEIDA COUNTY, WISCONSIN.



DATED 8-8-'61

L. M. Podeski

RECEIVED & FILED # **1926**
 Oneida County Surveyor's Office
 Date: *RP*
 By: *RP*
 OCS Area # *5-140*