

L982

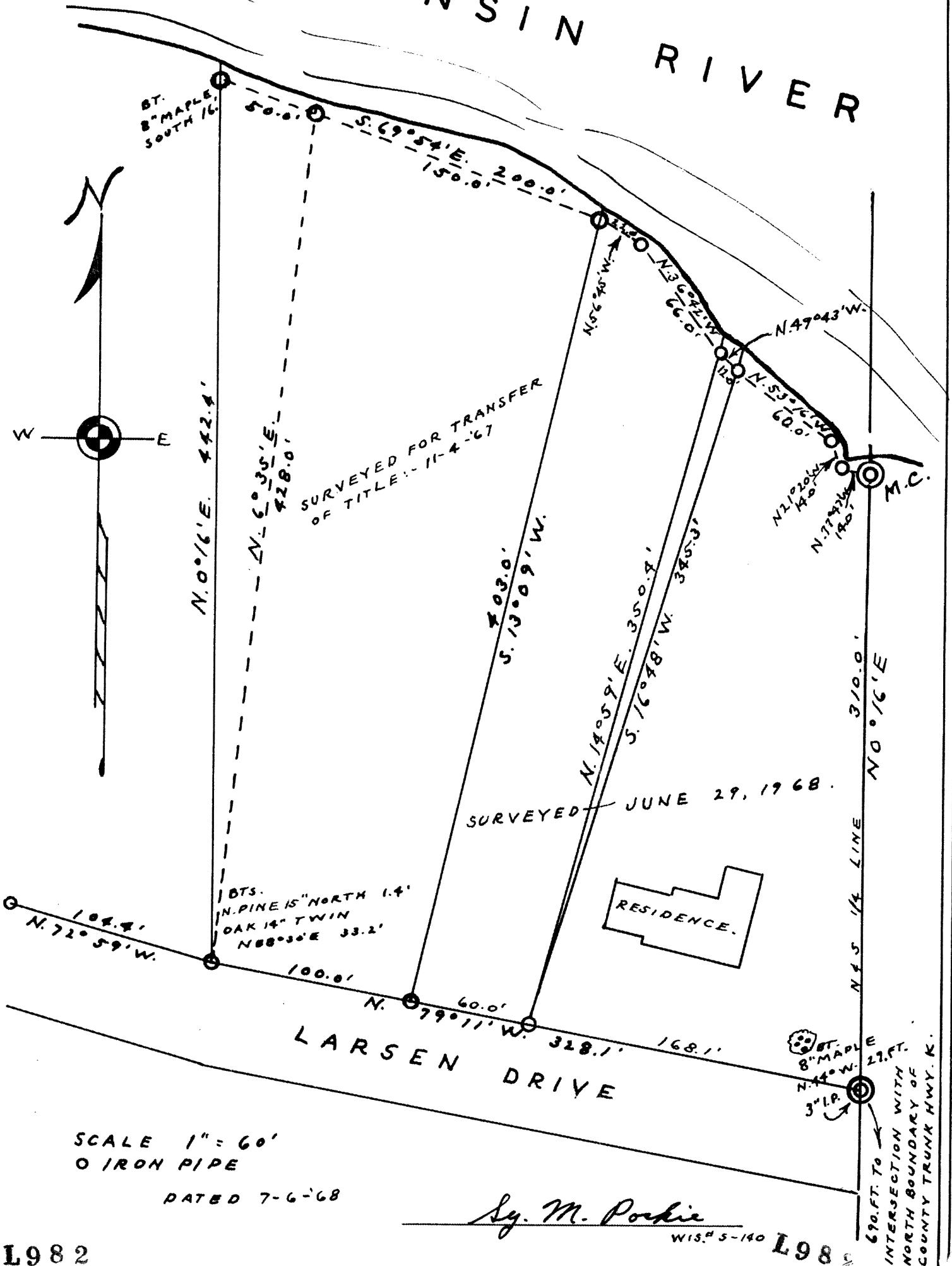
SURVEY FOR E. L. MASON

IN

SE 1/4-SW 1/4, SEC. 36, T. 37 N., R. 8 E.,
ONEIDA COUNTY, WISCONSIN.

RECEIVED & FILED # **L982**
 Oneida County Surveyor's Office
 Date **JUL 25 1968**
 By *A.P.*
 OCS Area #.....

WISCONSIN RIVER



SCALE 1" = 60'
O IRON PIPE

DATED 7-6-68

Sy. M. Poehle

WIS. 5-140 L982

L982

690. FT. TO
INTERSECTION WITH
NORTH BOUNDARY OF
COUNTY TRUNK HWY. K.