

L991

L991

RECEIVED & FILED #

Oneida County Surveyor's Office

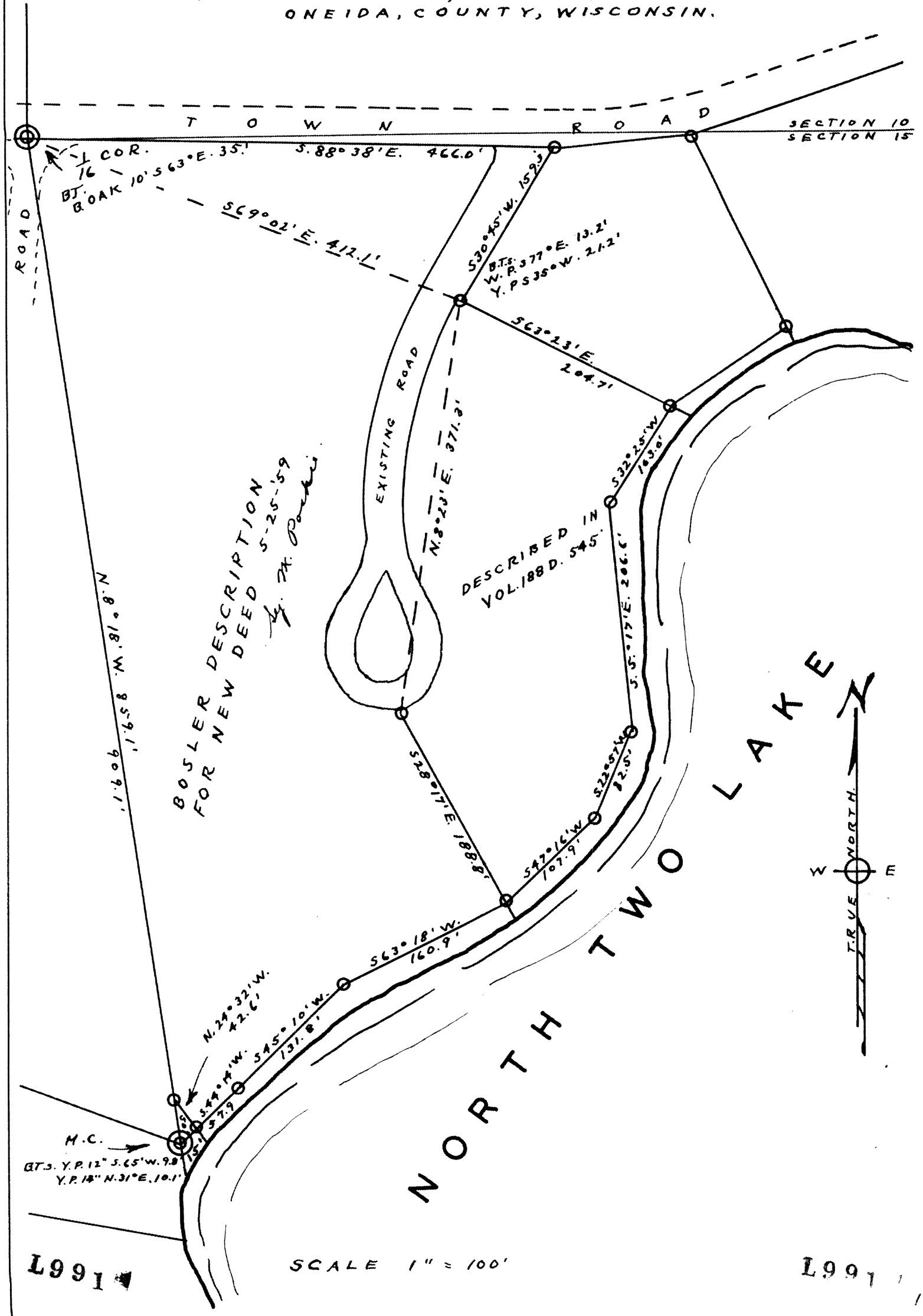
Date JUL 25 1989

By K.P.

OCS Area #

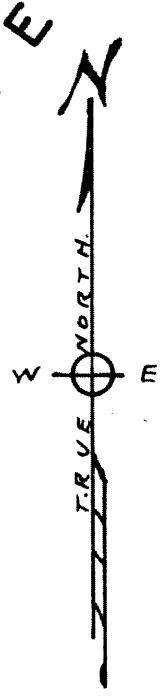
SURVEY FOR E. COURTNEY BOSLER

IN GOV'T. LOT 1, SEC. 15, T38N. R7E.
ONEIDA, COUNTY, WISCONSIN.



BOSLER DESCRIPTION
FOR NEW DEED 5-25-59
by W. Parki

DESCRIBED IN
VOL. 188 D. 545.



SCALE 1" = 100'

L991

L991