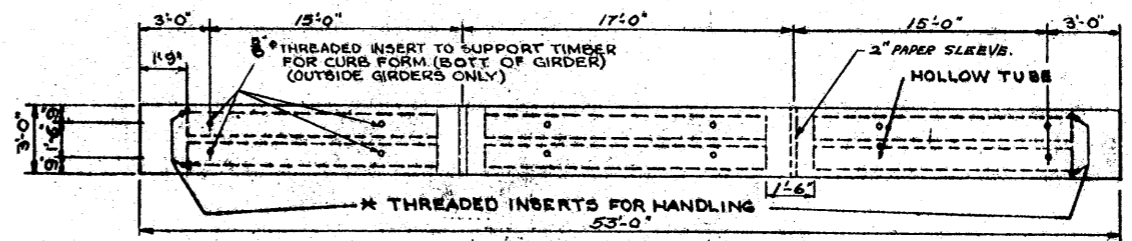
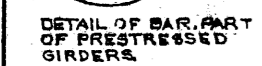


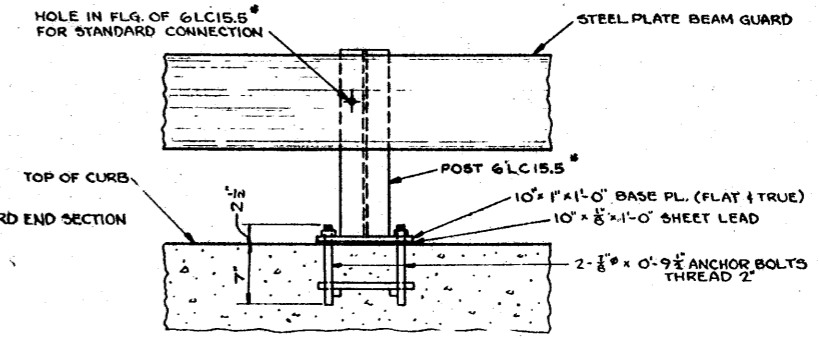
HALF CROSS SECTION OF ROADWAY



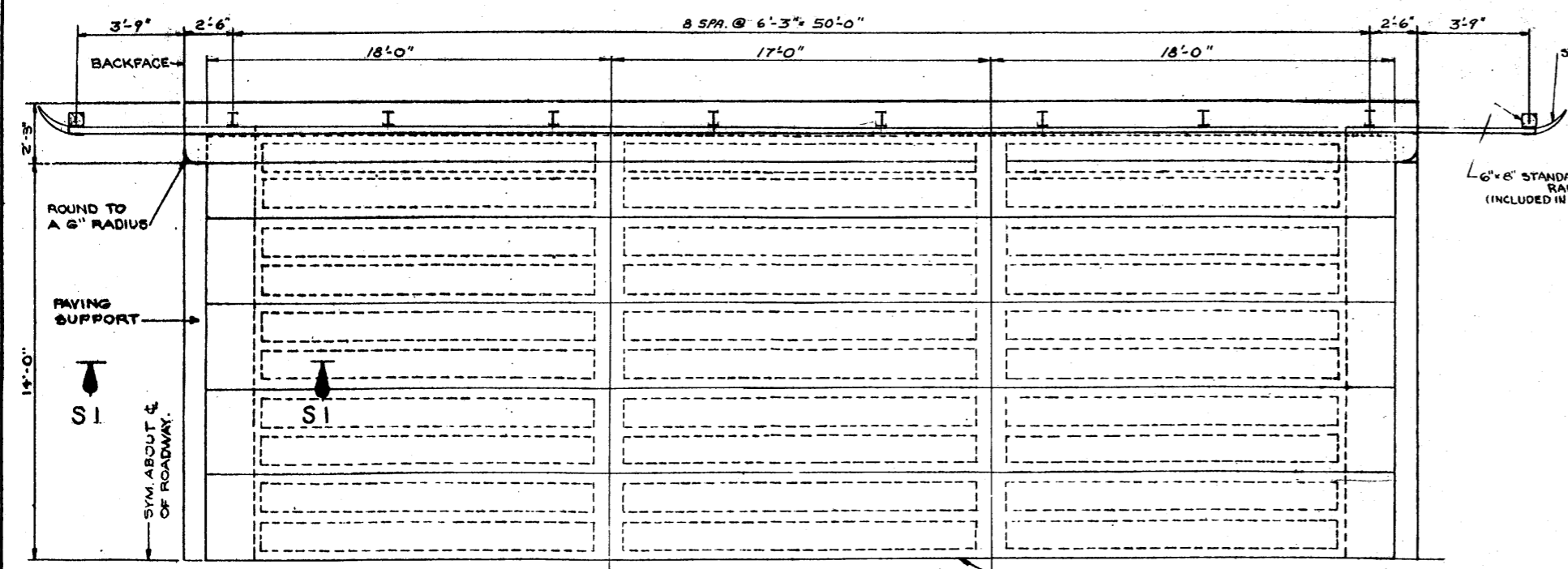
PLAN OF GIRDER  
 THEORETICAL PRESTRESSED CAMBER 2/18



8" THREADED INSERTS TO SUPPORT TIMBERS FOR CURB FORMS - FOR SPACING SEE "PLAN OF GIRDER"

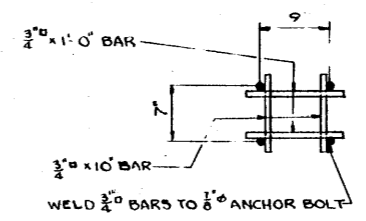


RAIL POST DETAIL

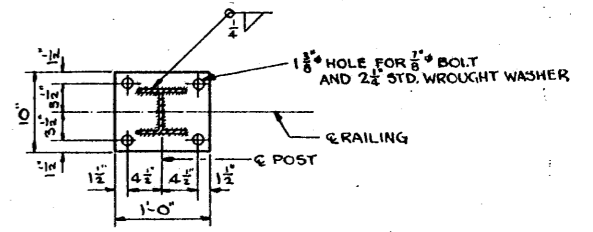


HALF PLAN

6" x 6" STANDARD GUARD RAIL POST (INCLUDED IN BID ITEM "STEEL RAILING")



POST ANCHOR DETAIL

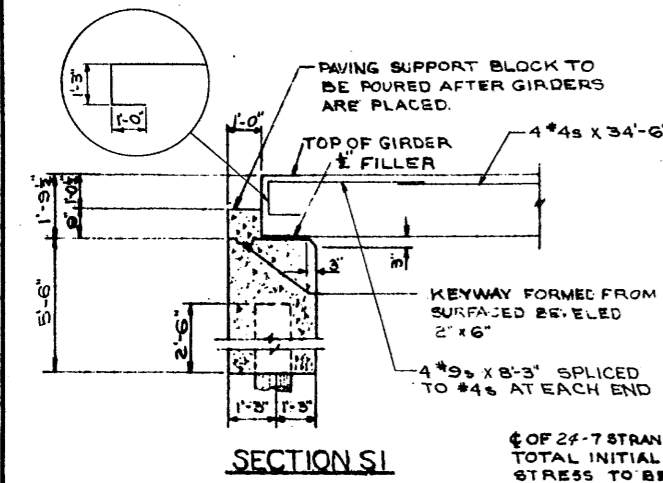


POST BASE PLATE

BILL OF BARS

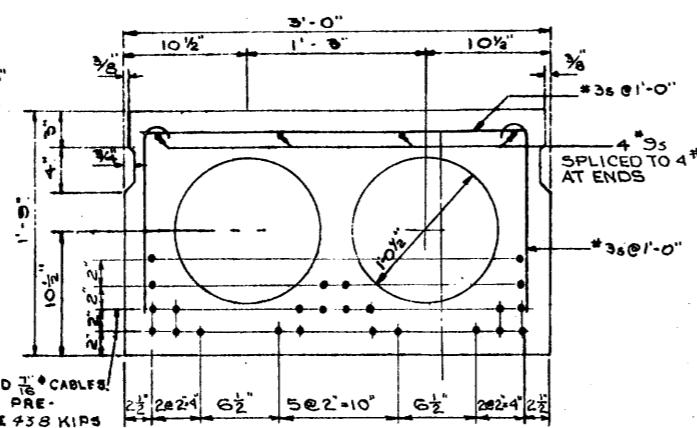
DIMENSIONS IN BENDING DETAILS ARE OUT TO OUT. 300 #

POUR MARK	NO.	SIZE	LENGTH	SPACING	LOCATION	DET.
B 1	88	4	2'-6"	1'-3"	CURB TRANS.	A
B 2	8	4	28'-0"	SHOWN	" LONG.	

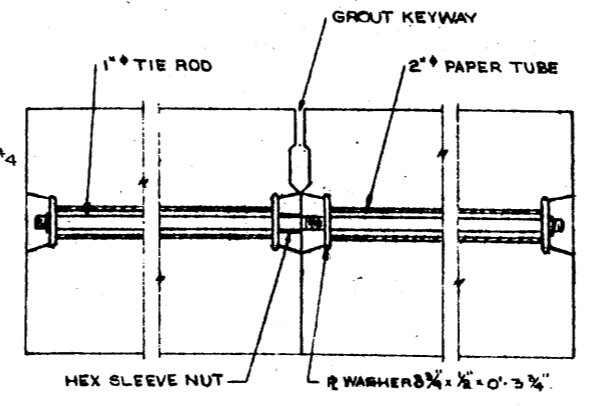


SECTION S1

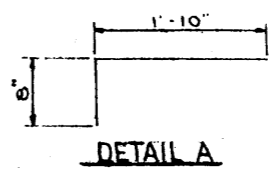
C OF 27-7 STRAND 7/8" CABLES  
 TOTAL INITIAL PRE-STRESS TO BE 438 KIPS FOR EACH GIRDER.



TYPICAL GIRDER CROSS SECTION



DECK CONNECTION DETAIL



DETAIL A

REVISION	STATE HIGHWAY COMMISSION OF WISCONSIN		
	SUPERSTRUCTURE		
	DESIGN SPEC. A.A.S.H.O.'57	LOADING H 18	DATE 1-22-55
	DESIGN J.E.	DRAWN A.W.B.	1/26/55
STRUCTURE	B-43-5	SHEET	2 OF 3