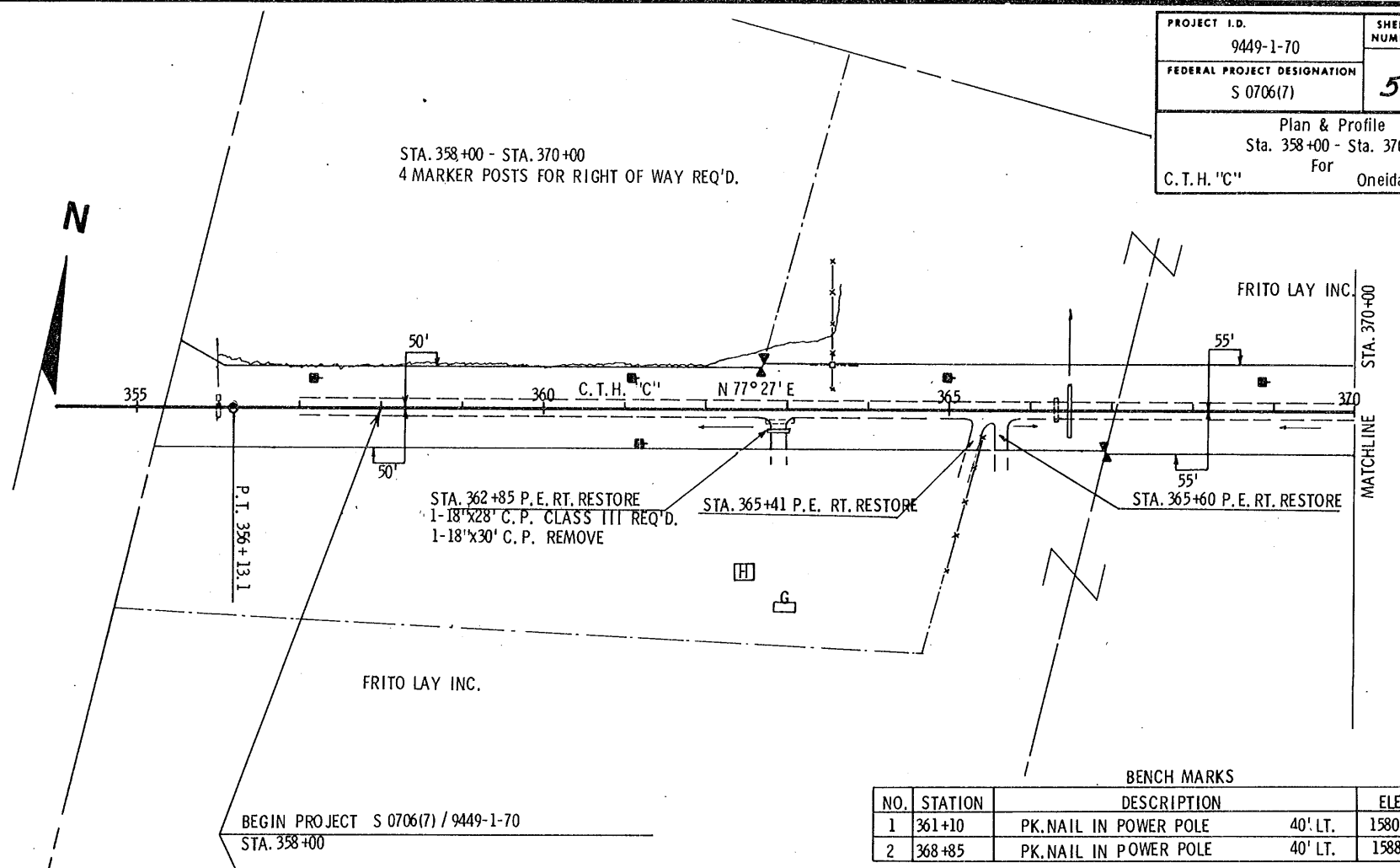


PROJECT I.D.	9449-1-70	SHEET NUMBER	5	TOTAL SHEETS	58
FEDERAL PROJECT DESIGNATION	S 0706(7)	Plan & Profile Sta. 358+00 - Sta. 370+00 For Oneida County.			
C.T.H. "C"					

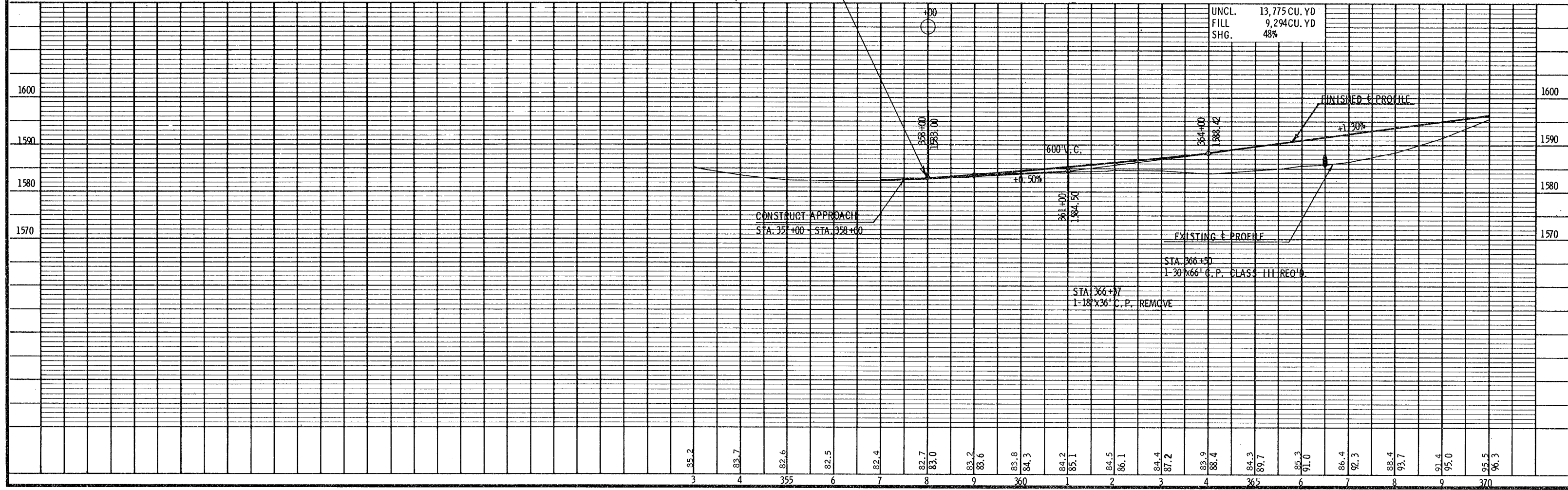


BENCH MARKS

NO.	STATION	DESCRIPTION	ELEV.
1	361+10	PK.NAIL IN POWER POLE 40' LT.	1580.19
2	368+85	PK.NAIL IN POWER POLE 40' LT.	1588.08

BEGIN PROJECT S 0706(7) / 9449-1-70
STA. 358+00

NET CENTERLINE LENGTH STA. 358+00 - STA. 370+00 = 1,200.00 LIN. FT.



3	35.2	4	83.7	5	82.6	6	82.5	7	82.4	8	82.7	83.0	9	83.2	83.6	10	83.8	84.3	11	84.2	85.1	12	84.5	86.1	13	84.4	87.2	14	83.9	88.4	15	84.3	89.7	16	85.3	91.0	17	86.4	92.3	18	88.4	93.7	19	91.4	95.0	20	95.5	96.3
---	------	---	------	---	------	---	------	---	------	---	------	------	---	------	------	----	------	------	----	------	------	----	------	------	----	------	------	----	------	------	----	------	------	----	------	------	----	------	------	----	------	------	----	------	------	----	------	------