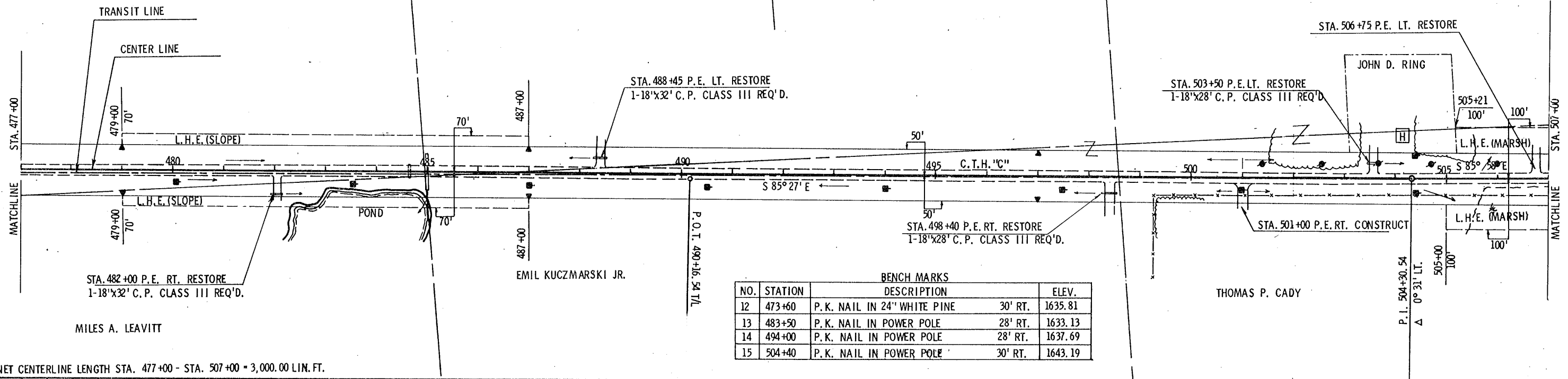


PROJECT I.D.	9449 - 1 - 70	SHEET NUMBER	15	TOTAL SHEETS	58
FEDERAL PROJECT DESIGNATION	S 0706(7)	Plan & Profile Sta. 477+00 - Sta. 507+00 For C.T.H. "C" Oneida County			

STA. 477+00 - STA. 507+00  
6 MARKER POST FOR RIGHT OF WAY REQ'D.

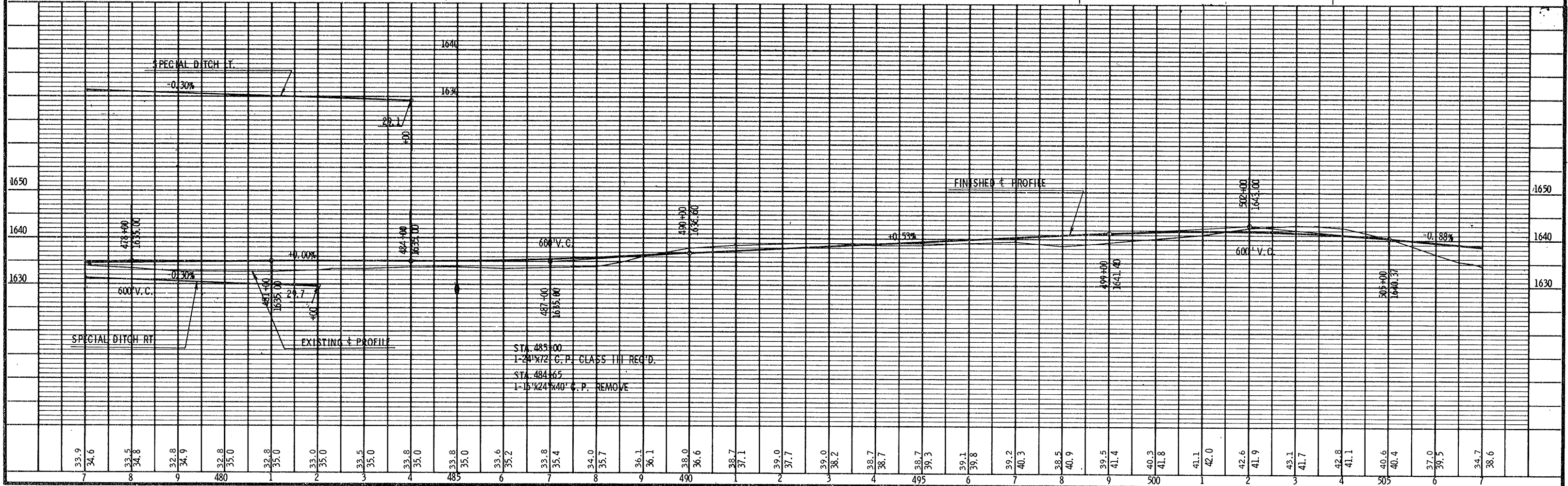
MILES A. LEAVITT

N



BENCH MARKS				
NO.	STATION	DESCRIPTION	ELEV.	
12	473+60	P.K. NAIL IN 24" WHITE PINE	30' RT.	1635.81
13	483+50	P.K. NAIL IN POWER POLE	28' RT.	1633.13
14	494+00	P.K. NAIL IN POWER POLE	28' RT.	1637.69
15	504+40	P.K. NAIL IN POWER POLE	30' RT.	1643.19

NET CENTERLINE LENGTH STA. 477+00 - STA. 507+00 = 3,000.00 LIN. FT.



STA. 485+00  
1-24"x72" C.P. CLASS III REQ'D.  
STA. 484+65  
1-18"x24"x40" C.P. REMOVE