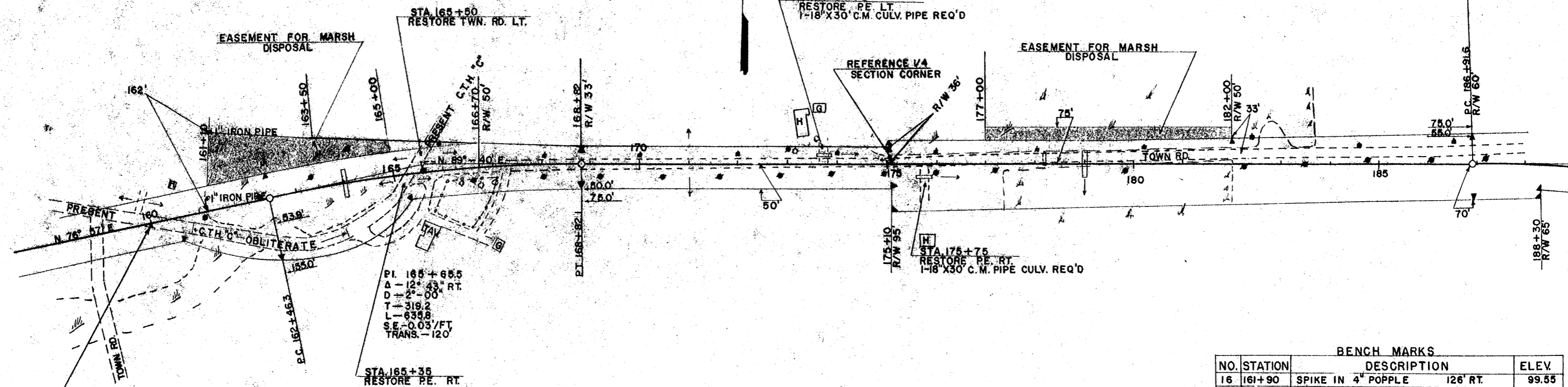


E.P.D. DIVISION	PROJECT	SHEET NUMBER	TOTAL SHEETS
4	S0706(3)	3	15



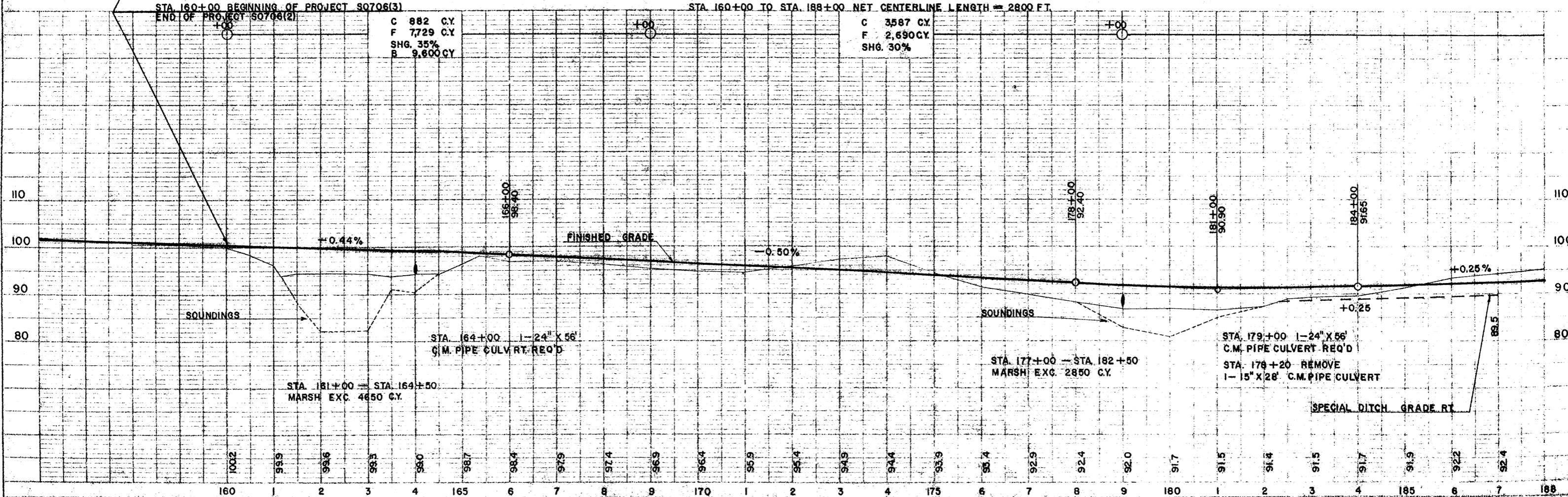
BENCH MARKS			
NO.	STATION	DESCRIPTION	ELEV.
16	161+90	SPIKE IN 4" POPPLE 126' RT.	99.55
17	171+35	SPIKE IN 6" W BIRCH 65' RT.	97.23
18	183+00	SPIKE IN 10" N. PINE 120' RT.	89.84

STA. 160+00 BEGINNING OF PROJECT S0706(3)

STA. 160+00 TO STA. 188+00 NET CENTERLINE LENGTH = 2800 FT.

C 882 C.Y.
F 7,729 C.Y.
SHG. 35%
B 9,600 C.Y.

C 3,587 C.Y.
F 2,690 C.Y.
SHG. 30%



PLAN
DATE 3/2/54
BY J. H. L. & SONS
CHECKED BY J. H. L. & SONS
SCALE AS SHOWN
NO. 1518

PROFILE
DATE 3/2/54
BY J. H. L. & SONS
CHECKED BY J. H. L. & SONS
SCALE AS SHOWN
NO. 1518