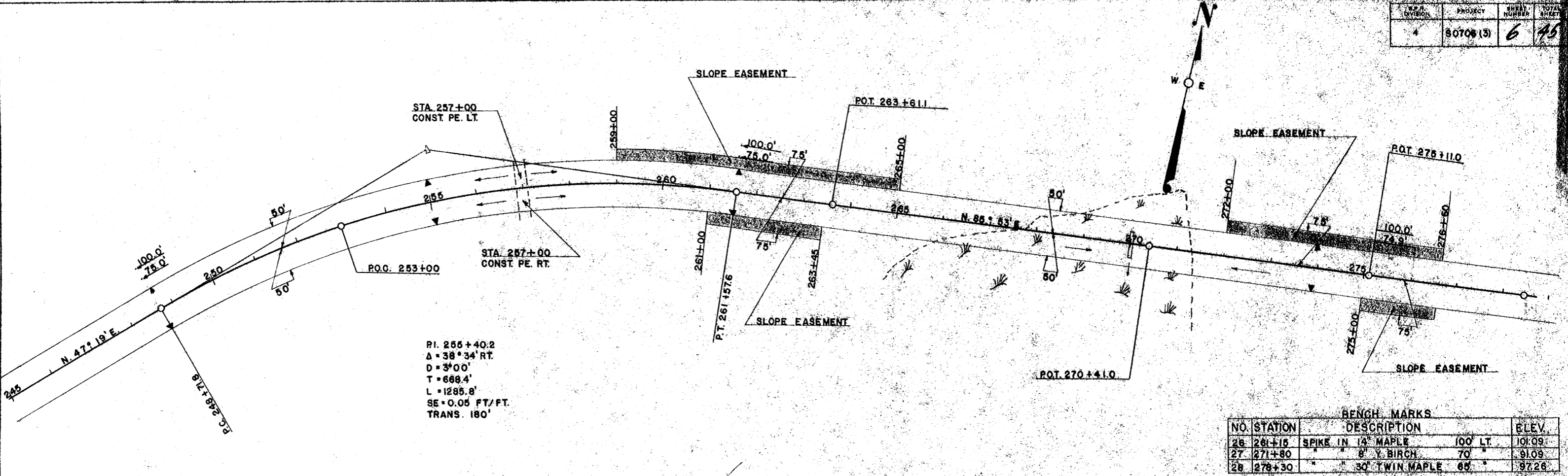


DATE: 5-72
 BY: J. K. ASZEL
 CHECKED: J. K. ASZEL
 PLAN
 SURVEYED: []
 PLOTTED: []
 NOTE BOOK: []
 NO. 1578
 ALL DIMENSIONS CHECKED
 BY: J. K. ASZEL



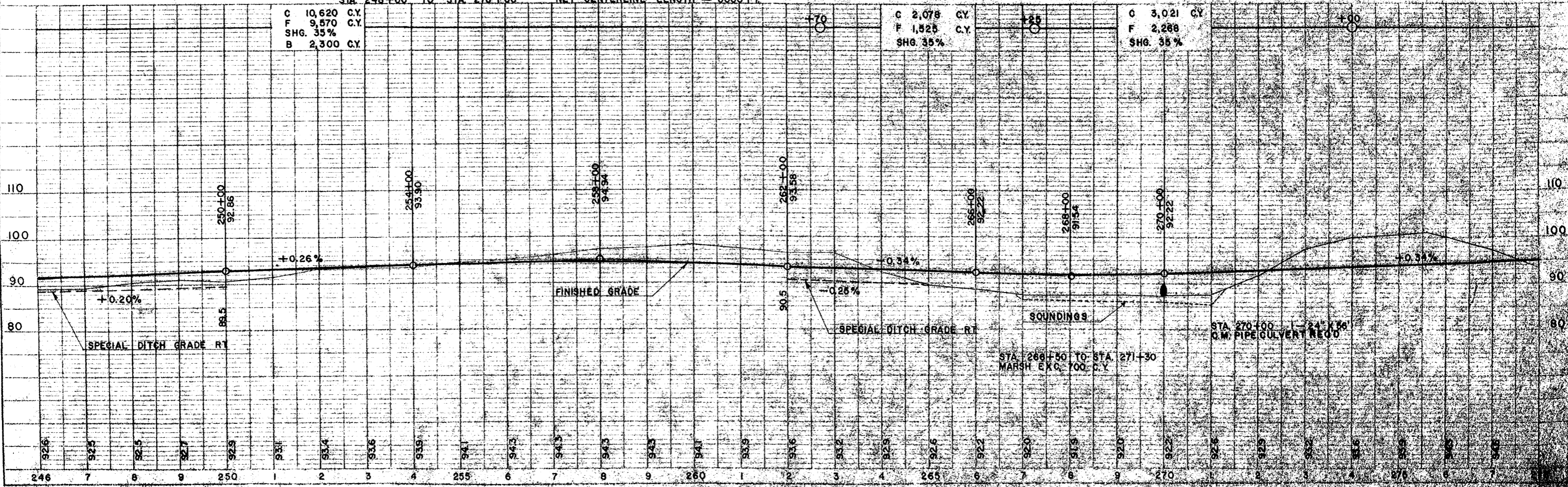
BENCH MARKS			
NO.	STATION	DESCRIPTION	ELEV.
26	261+15	SPIKE IN 14" MAPLE 100' LT.	101.09
27	271+80	8" Y. BIRCH 70'	91.09
28	278+30	30" TWIN MAPLE 65'	97.26

STA 248+00 TO STA 278+00 NET CENTERLINE LENGTH = 3000 FT.

C 10,620 C.Y.
 F 9,570 C.Y.
 SHG. 35%
 B 2,300 C.Y.

C 2,078 C.Y.
 F 1,525 C.Y.
 SHG. 35%

C 3,021 C.Y.
 F 2,268 C.Y.
 SHG. 35%



DATE: 5-72
 BY: J. K. ASZEL
 CHECKED: J. K. ASZEL
 PROFILE
 SURVEYED: []
 PLOTTED: []
 NOTE BOOK: []
 NO. 1578
 ALL DIMENSIONS CHECKED
 BY: J. K. ASZEL