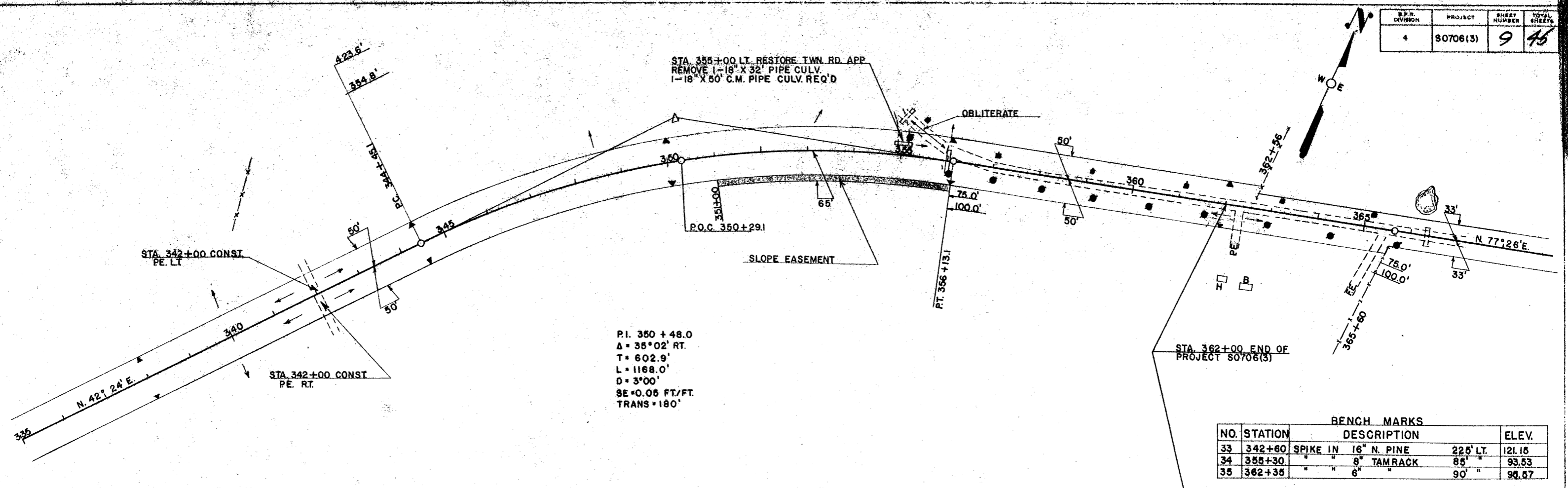


D.P. DIVISION	PROJECT	SHEET NUMBER	TOTAL SHEETS
4	S0706(3)	9	45

DATE: 3-28-58
 DRAWN BY: J. M. JAGGOW
 CHECKED BY: J. M. JAGGOW
 NO. 184



P.I. 350 + 48.0
 Δ = 35° 02' RT.
 T = 602.9'
 L = 1168.0'
 D = 3° 00'
 SE = 0.05 FT./FT.
 TRANS = 180'

BENCH MARKS

NO.	STATION	DESCRIPTION	ELEV.
33	342+60	SPIKE IN 16" N. PINE	121.16
34	355+30	" " 8" TAMRACK	93.63
35	362+35	" " 6" " "	95.67

DATE: 3-28-58
 DRAWN BY: J. M. JAGGOW
 CHECKED BY: J. M. JAGGOW
 NO. 184

