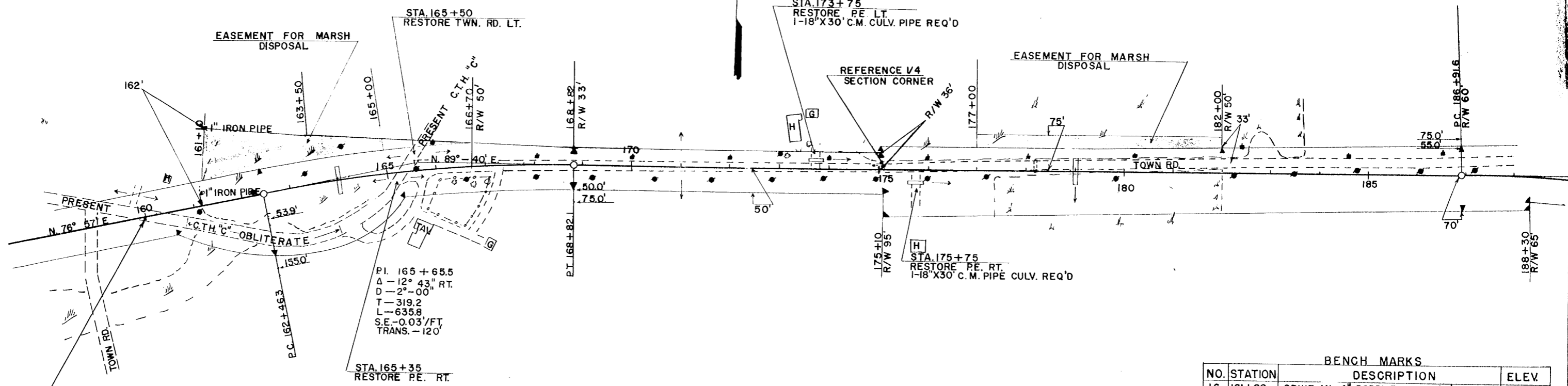


DIVISION	PROJECT	SHEET NUMBER	TOTAL SHEETS
4	S0706(3)	3	45

50706(5) 3-9



PI. 165 + 65.5
 Δ - 12° 43' RT.
 D - 2' - 00"
 T - 319.2
 L - 635.8
 $S.E.$ - 0.03'/FT.
 $TRANS.$ - 120'

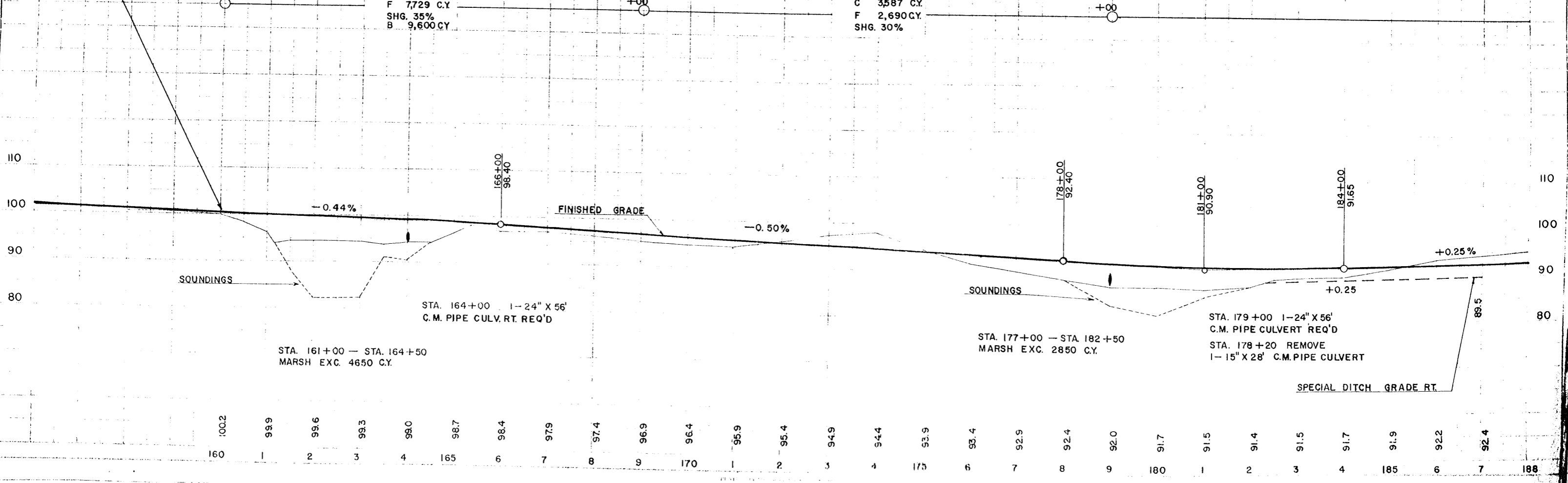
BENCH MARKS				
NO.	STATION	DESCRIPTION		ELEV.
16	161+90	SPIKE IN	4" POPPLE 126' RT.	99.55
17	171+35	SPIKE IN	8" W. BIRCH 65' RT.	97.23
18	183+00	SPIKE IN	10" N. PINE 120' RT.	89.84

STA. 160+00 BEG. PROJ. S0706(5)
 STA. 160+00 BEGINNING OF PROJECT S0706(3)
 END OF PROJECT S0706(2)

C 882 C.Y.
 F 7,729 C.Y.
 SHG. 35%
 B 9,600 C.Y.

STA. 160+00 TO STA. 188+00 NET CENTERLINE LENGTH = 2800 FT.

C 3,587 C.Y.
 F 2,690 C.Y.
 SHG. 30%



STA. 164+00 1-24" X 56'
 C.M. PIPE CULVERT REQ'D

STA. 161+00 - STA. 164+50
 MARSH EXC. 4650 C.Y.

STA. 177+00 - STA. 182+50
 MARSH EXC. 2850 C.Y.

STA. 179+00 1-24" X 56'
 C.M. PIPE CULVERT REQ'D
 STA. 178+20 REMOVE
 1-15" X 28' C.M. PIPE CULVERT

SPECIAL DITCH GRADE RT.

100.2	99.9	99.6	99.3	98.0	98.7	98.4	97.9	97.4	96.9	96.4	95.9	95.4	94.9	94.4	93.9	93.4	92.9	92.4	92.0	91.7	91.5	91.4	91.5	91.7	91.9	92.2	92.4	
160	1	2	3	4	165	6	7	8	9	170	1	2	3	4	175	6	7	8	9	180	1	2	3	4	185	6	7	188

DATE: 3-58
 7-58
 BY: J. D. Johnson
 CHECKED: M. Johnson
 IN CHARGE: J. D. Johnson

PROJECT: S0706(5)
 SHEET: 3 OF 45
 DRAWN: J. D. Johnson
 CHECKED: M. Johnson
 IN CHARGE: J. D. Johnson