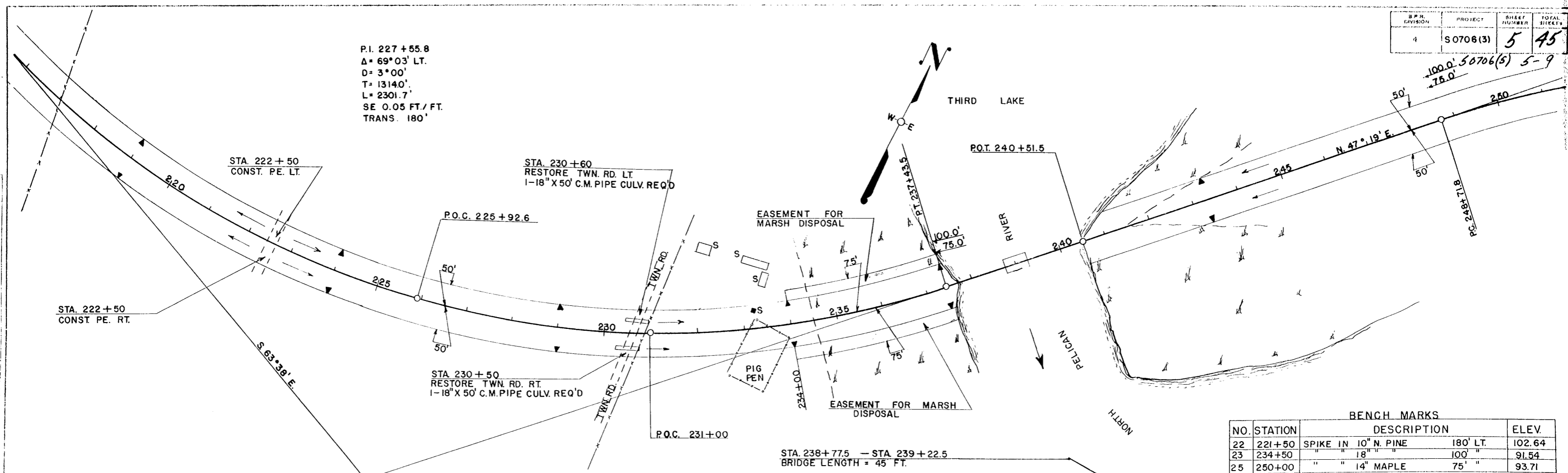


DISTRICT	PROJECT	SHEET NUMBER	TOTAL SHEETS
4	S 0706 (3)	5	45

100.0' 50706(5) 5-9
75.0'

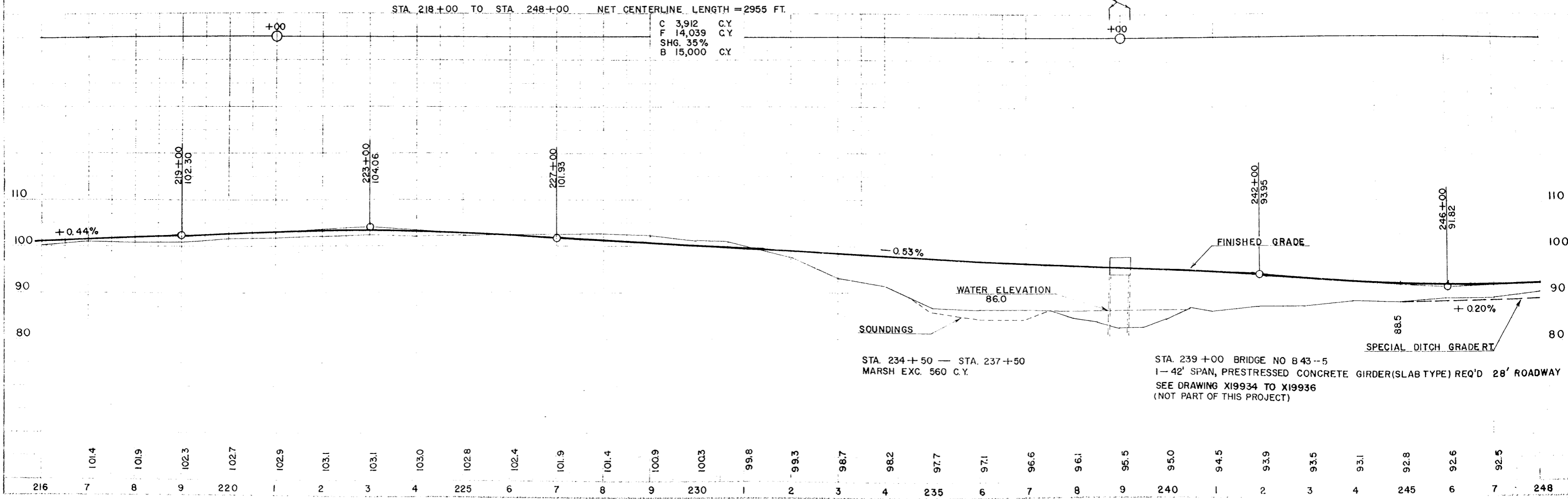
P.I. 227 + 55.8
 $\Delta = 69^{\circ} 03' \text{ LT.}$
 $D = 3^{\circ} 00'$
 $T = 13140'$
 $L = 2301.7'$
 $SE \ 0.05 \text{ FT./FT.}$
 $TRANS. \ 180'$



BENCH MARKS

NO.	STATION	DESCRIPTION	ELEV.
22	221+50	SPIKE IN 10" N. PINE 180' LT.	102.64
23	234+50	" " 18" " " 100" "	91.54
25	250+00	" " 14" MAPLE 75" "	93.71

STA. 218+00 TO STA. 248+00 NET CENTERLINE LENGTH = 2955 FT.
 C 3,912 C.Y.
 F 14,039 C.Y.
 SHG. 35%
 B 15,000 C.Y.



STA. 234 + 50 — STA. 237 + 50
 MARSH EXC. 560 C.Y.

STA. 239 + 00 BRIDGE NO B 43 -- 5
 1 — 42' SPAN, PRESTRESSED CONCRETE GIRDER (SLAB TYPE) REQ'D 28' ROADWAY
 SEE DRAWING X19934 TO X19936
 (NOT PART OF THIS PROJECT)

DATE 5-58
 7-58
 W. J. ...
 I.B.M.

5-58
 7-58
 W. J. ...
 I.B.M.

I.B.M.