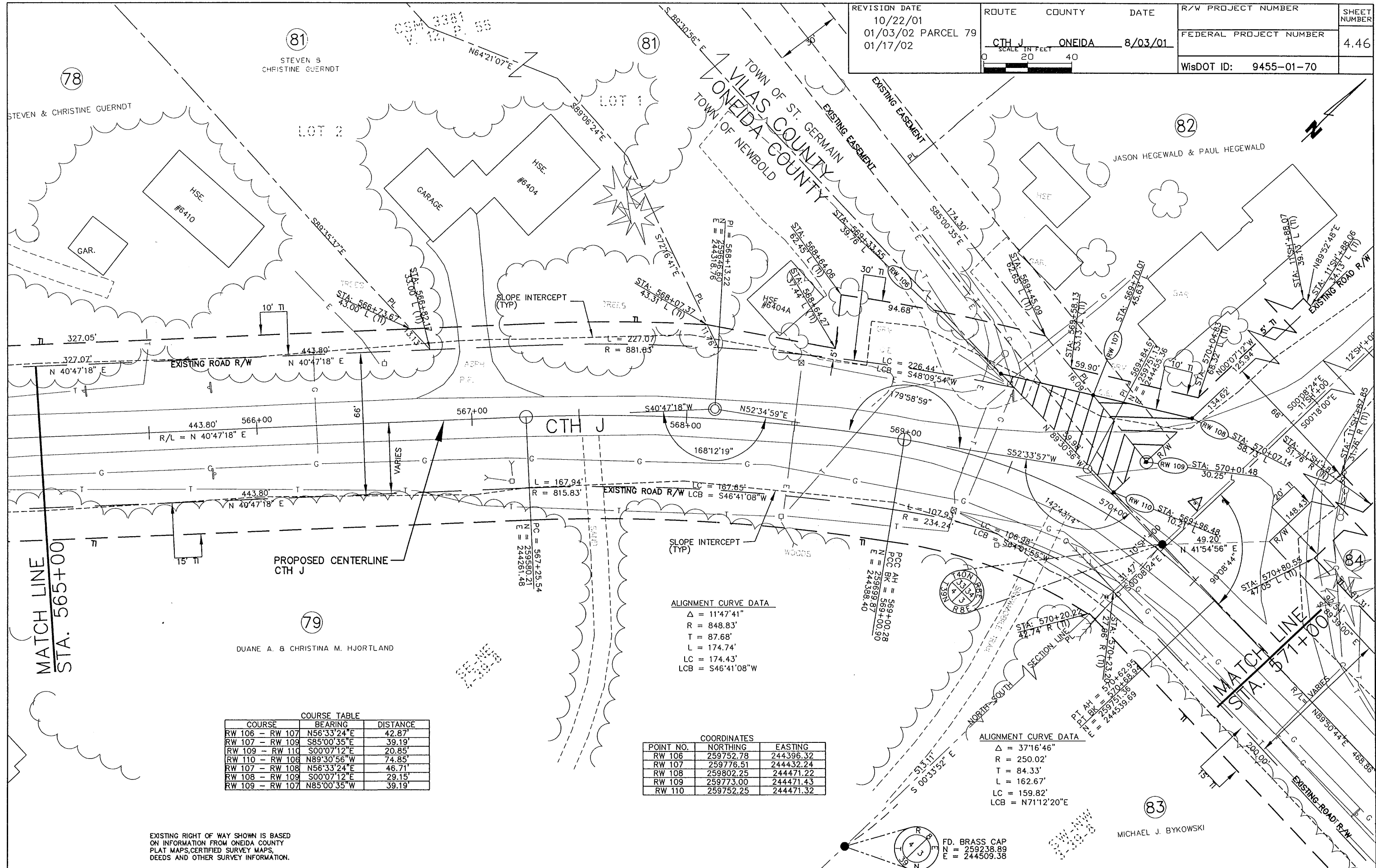
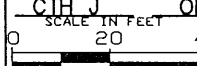


REVISION DATE	ROUTE	COUNTY	DATE	R/W PROJECT NUMBER	SHEET NUMBER
10/22/01	CTH J	ONEIDA	8/03/01	FEDERAL PROJECT NUMBER	4.46
01/03/02	PARCEL 79			WisDOT ID: 9455-01-70	
01/17/02					



COURSE TABLE

COURSE	BEARING	DISTANCE
RW 106 - RW 107	N56°33'24"E	42.87'
RW 107 - RW 109	S85°00'35"E	39.19'
RW 109 - RW 110	S00°07'12"E	20.85'
RW 110 - RW 108	N89°30'56"W	74.85'
RW 107 - RW 108	N56°33'24"E	46.71'
RW 108 - RW 109	S00°07'12"E	29.15'
RW 109 - RW 107	N85°00'35"W	39.19'

ALIGNMENT CURVE DATA

Δ = 11°47'41"
R = 848.83'
T = 87.68'
L = 174.74'
LC = 174.43'
LCB = S46°41'08"W

COORDINATES

POINT NO.	NORTHING	EASTING
RW 106	259752.78	244396.32
RW 107	259776.51	244432.24
RW 108	259802.25	244471.22
RW 109	259773.00	244471.43
RW 110	259752.25	244471.32

ALIGNMENT CURVE DATA

Δ = 37°16'46"
R = 250.02'
T = 84.33'
L = 162.67'
LC = 159.82'
LCB = N71°12'20"E

FD. BRASS CAP
 N = 259238.89
 E = 244509.38

ORIGINATOR: [blank] REV. DATE: [blank] PLOT NAME: [blank] PLOT SCALE: [blank] PLOTS: [blank]

EXISTING RIGHT OF WAY SHOWN IS BASED ON INFORMATION FROM ONEIDA COUNTY PLAT MAPS, CERTIFIED SURVEY MAPS, DEEDS AND OTHER SURVEY INFORMATION.