

BENCH MARKS			
NO.	STA.	DESCRIPTION	ELEV.
19	117+18	NAIL IN POWER POLE	25' RT. 1561.30
20	120+74	NAIL IN POWER POLE	25' RT. 1554.81
21	126+59	NAIL IN 7" ASPEN	38' RT. 1539.73
22	132+83	NAIL IN POWER POLE	10' RT. 1560.25
23	135+45	R.R. SPIKE IN 12" WHITE BIRCH	120' RT. 1563.02

R/W MARKER POSTS
115+00 - 135+80 11 REQ'D.

STA. 122 + 15, LT.
RESTORE F.E.
1-18" C.P. REQ'D.

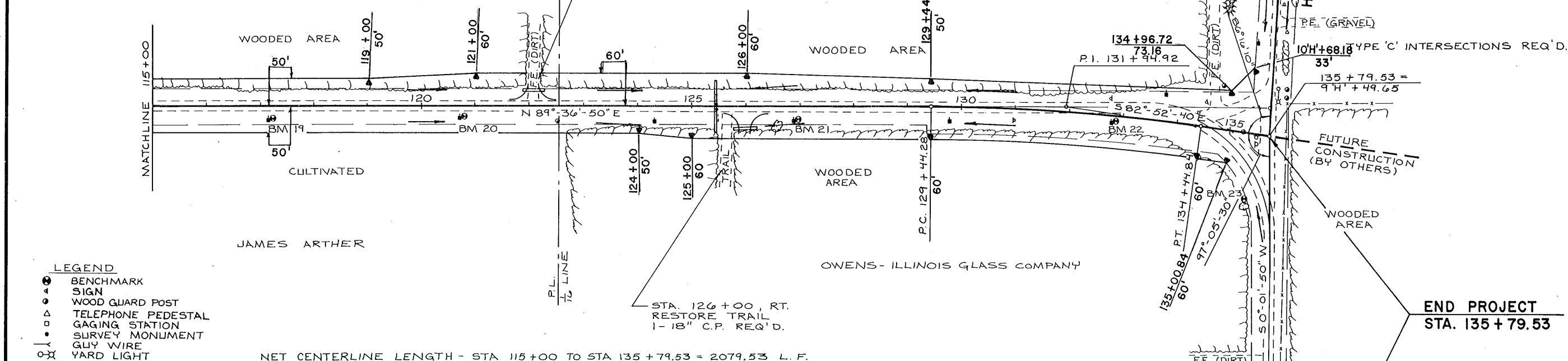
STA. 125 + 50
1-24" C.P. REQ'D.

NORRIS GUNDLACH

P.I. 131+94.92
Δ - 7°-30'-30"
D - 1°-30'
T - 250.64'
L - 500.56'
R - 3,819.72'
S.E. - 0.028 FT./FT.
R.O. - 150.00'

STATE PROJECT NUMBER	SHEET NO.
9456-1-70	5.3

N



NET CENTERLINE LENGTH - STA 115+00 TO STA 135+79.53 = 2079.53 L.F.

STA 115+00 TO STA 135+79.53		
UNCUT EXC.	14,205 C.Y.	
FILL	5,004 C.Y.	30% SHG.
WASTE	7,701 C.Y.	

