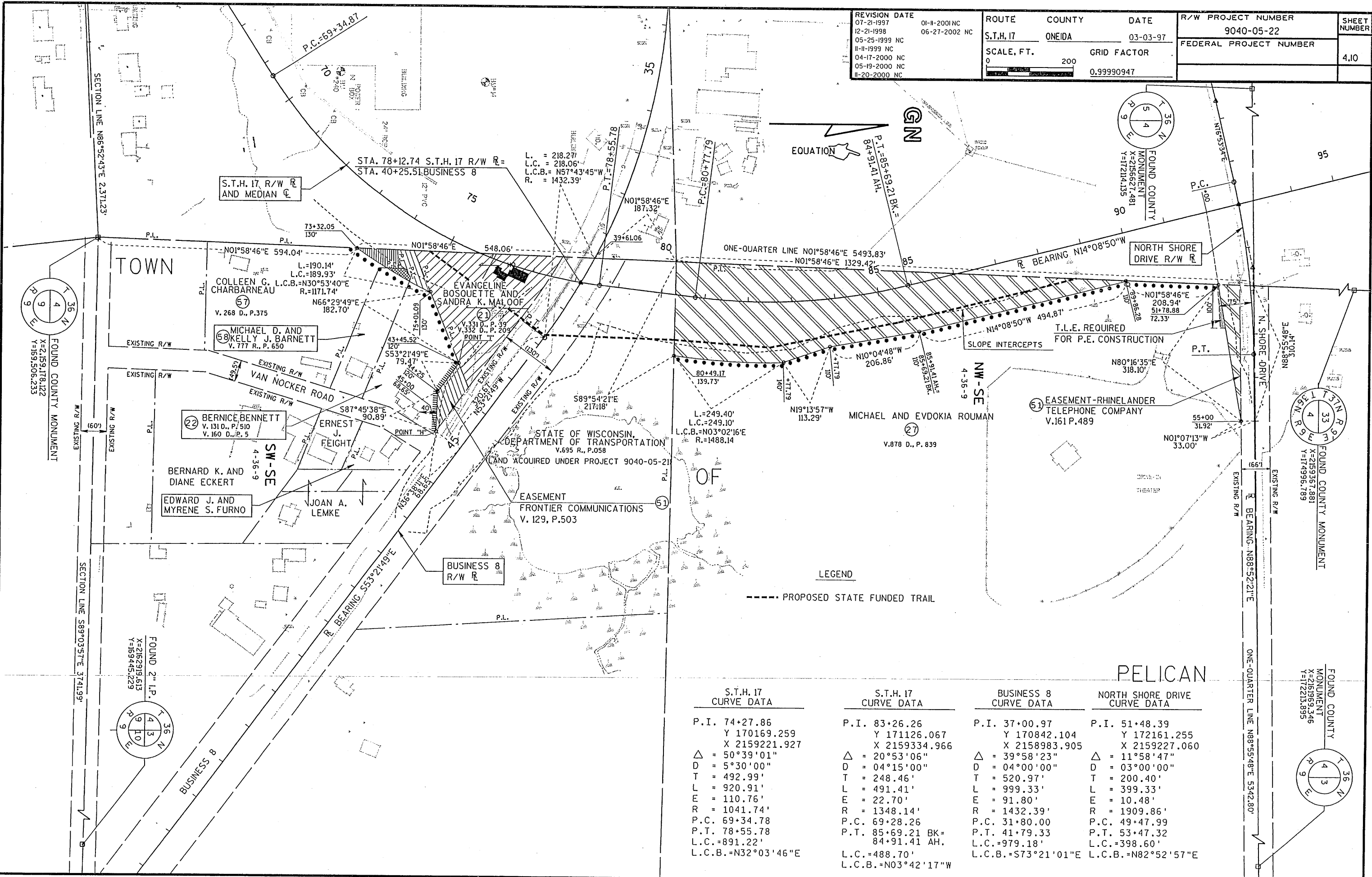


REVISION DATE	01-11-2001 NC	ROUTE	S.T.H. 17	COUNTY	ONEIDA	DATE	03-03-97	R/W PROJECT NUMBER	9040-05-22	SHEET NUMBER	4.10
07-21-1997	06-27-2002 NC							FEDERAL PROJECT NUMBER			
12-21-1998											
05-25-1999 NC											
11-11-1999 NC											
04-17-2000 NC											
05-19-2000 NC											
11-20-2000 NC											
		SCALE, FT.	0	GRID FACTOR							
			200		0.99990347						

GB1
PEN TABLE = #PlotLaser.mv80pp.tbl
DATE OF PLOT = 7/17/02
DESIGN FILE IS L:\440307\DGN\040405.rp.dgn
DGN LEVELS ON = 1-62

LEVELS ON - 1, 2, 3, 4, 5, 6, 7, 8, 9, 10, 11, 12, 13, 14, 15, 16, 17, 18, 19, 20, 21, 22, 23, 24, 25, 26, 27, 28, 29, 30, 31, 32, 33, 34, 35, 36, 37, 38, 39, 40, 41, 42, 43, 44, 45, 46, 47, 48, 49, 50, 51, 52, 53, 54, 55, 56, 57, 58, 59, 60, 61, 62



S.T.H. 17 CURVE DATA	S.T.H. 17 CURVE DATA	BUSINESS 8 CURVE DATA	NORTH SHORE DRIVE CURVE DATA
P.I. 74+27.86	P.I. 83+26.26	P.I. 37+00.97	P.I. 51+48.39
Y 170169.259	Y 171126.067	Y 170842.104	Y 172161.255
X 2159221.927	X 2159334.966	X 2158983.905	X 2159227.060
Δ = 50°39'01"	Δ = 20°53'06"	Δ = 39°58'23"	Δ = 11°58'47"
D = 5°30'00"	D = 04°15'00"	D = 04°00'00"	D = 03°00'00"
T = 492.99'	T = 248.46'	T = 520.97'	T = 200.40'
L = 920.91'	L = 491.41'	L = 999.33'	L = 399.33'
E = 110.76'	E = 22.70'	E = 91.80'	E = 10.48'
R = 1041.74'	R = 1348.14'	R = 1432.39'	R = 1909.86'
P.C. 69+34.78	P.C. 69+28.26	P.C. 31+80.00	P.C. 49+47.99
P.T. 78+55.78	P.T. 85+69.21 BK =	P.T. 41+79.33	P.T. 53+47.32
L.C. = 891.22'	84+91.41 AH.	L.C. = 979.18'	L.C. = 398.60'
L.C.B. = N32°03'46"E	L.C. = 488.70'	L.C.B. = S73°21'01"E	L.C.B. = N82°52'57"E
	L.C.B. = N03°42'17"W		