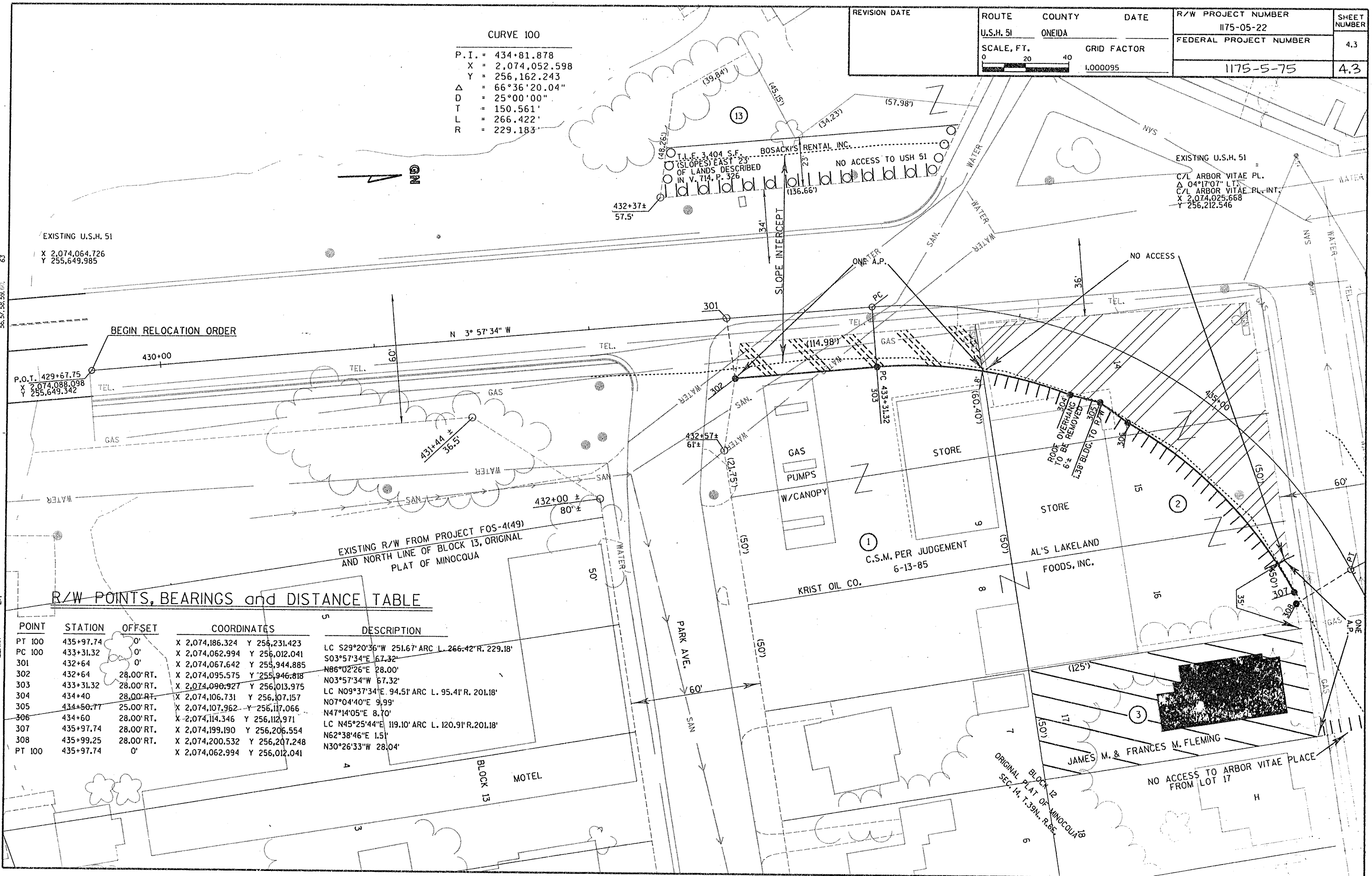


CURVE 100

P.I. = 434+81.878
 X = 2,074,052.598
 Y = 256,162.243
 Δ = 66°36'20.04"
 D = 25°00'00"
 T = 150.561'
 L = 266.422'
 R = 229.183'

REVISION DATE	ROUTE	COUNTY	DATE	R/W PROJECT NUMBER	SHEET NUMBER
	U.S.H. 51	ONEIDA		1175-05-22	4.3
	SCALE, FT.	GRID FACTOR		FEDERAL PROJECT NUMBER	
	0 20 40	1.000095		1175-5-75	4.3



EXISTING U.S.H. 51
 X 2,074,064.726
 Y 255,649.985

P.O.T. 429+57.75
 X 2,074,088.098
 Y 255,649.342

EXISTING R/W FROM PROJECT F05-4(49)
 AND NORTH LINE OF BLOCK 13, ORIGINAL
 PLAT OF MINOCQUA

R/W POINTS, BEARINGS and DISTANCE TABLE

POINT	STATION	OFFSET	COORDINATES	DESCRIPTION
PT 100	435+97.74	0'	X 2,074,186.324 Y 256,231.423	LC S29°20'36"W 251.67' ARC L. 266.42' R. 229.18'
PC 100	433+31.32	0'	X 2,074,062.994 Y 256,012.041	S03°57'34"E 167.32'
301	432+64	0'	X 2,074,067.642 Y 255,944.885	N86°02'26"E 28.00'
302	432+64	28.00' RT.	X 2,074,095.575 Y 255,946.818	N03°57'34"W 67.32'
303	433+31.32	28.00' RT.	X 2,074,090.927 Y 256,013.975	LC N09°37'34"E 94.51' ARC L. 95.41' R. 201.18'
304	434+40	28.00' RT.	X 2,074,106.731 Y 256,107.157	N07°04'40"E 9.99'
305	434+50.77	25.00' RT.	X 2,074,107.962 Y 256,117.066	N47°14'05"E 8.70'
306	434+60	28.00' RT.	X 2,074,114.346 Y 256,112.971	LC N45°25'44"E 119.10' ARC L. 120.91' R. 201.18'
307	435+97.74	28.00' RT.	X 2,074,199.190 Y 256,206.554	N62°38'46"E 1.51'
308	435+99.25	28.00' RT.	X 2,074,200.532 Y 256,207.248	N30°26'33"W 28.04'
PT 100	435+97.74	0'	X 2,074,062.994 Y 256,012.041	

63
56.57, 58.59, 60.

27
22.23

LEVELS ON - 1.