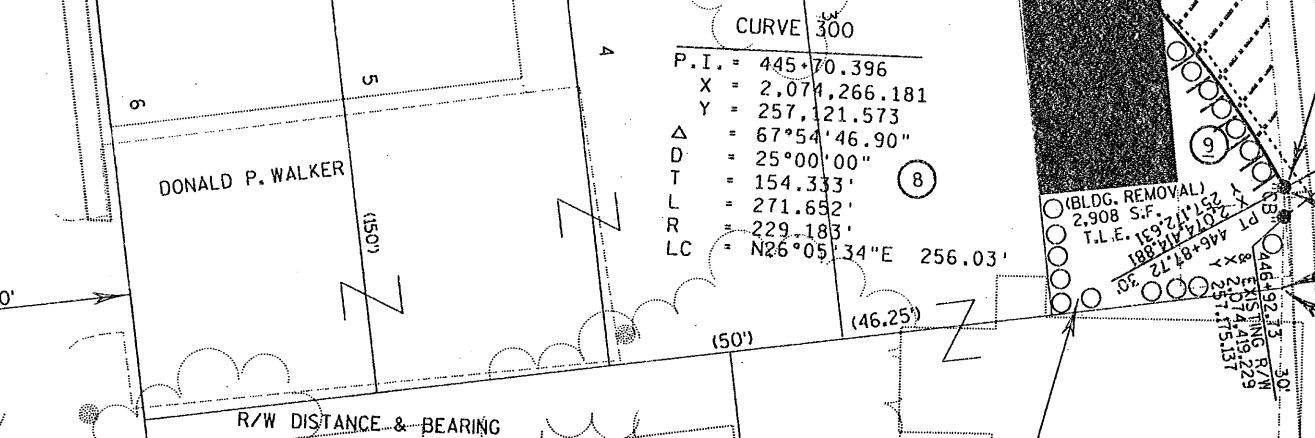
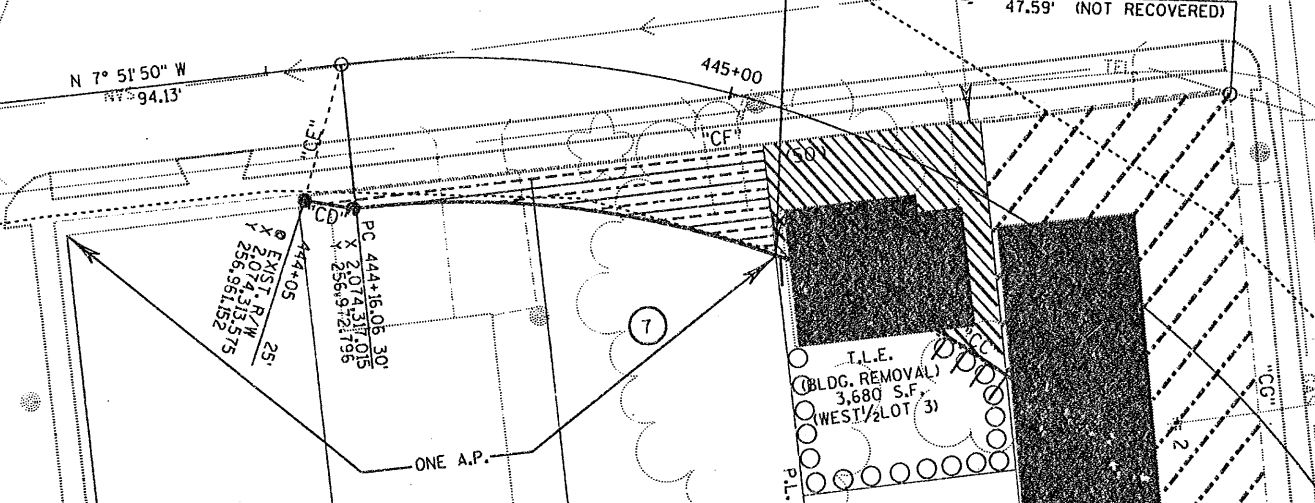
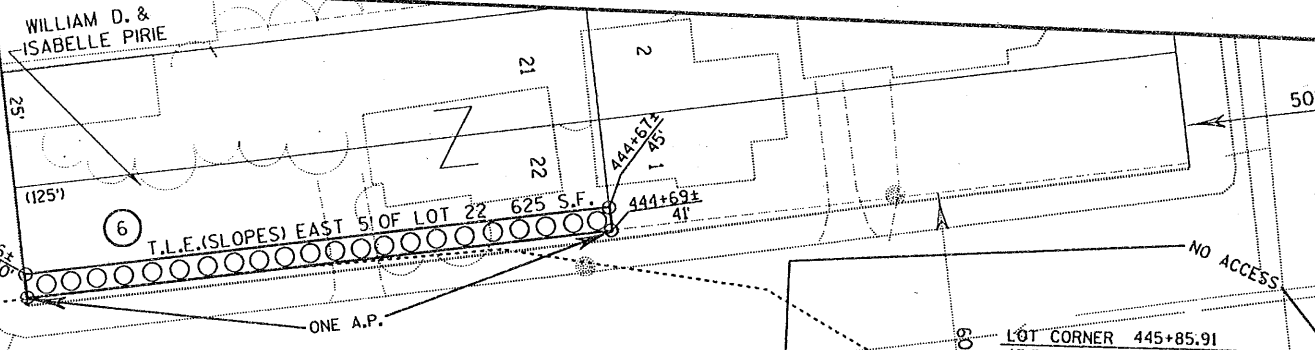


REVISION DATE	ROUTE	COUNTY	DATE	R/W PROJECT NUMBER	SHEET NUMBER
	U.S.H. 51	ONEIDA		1175-05-22	4.5
	SCALE, FT.	GRID FACTOR		FEDERAL PROJECT NUMBER	
	0 20 40	1.000095		1175-5-75	4.5

R/W DISTANCE & BEARING		
LINE	BEARING	DISTANCE
"BA"	N53°06'12"W	35.49'
"BB"	N58°31'26"E	13.96'
"BC"	N60°02'57"E	85.19'
"BD"	L.C.N44°09'45"E	107.40' ARC 108.79' R. 196.18'
"BE"	N62°45'30"E	7.58'
"BF"	N09°54'10"E	85.67'
"BG"	S40°27'58"E	47.97'

LOT 2
C.S.M.
VOL. 4 P. 1007



R/W DISTANCE & BEARING		
LINE	BEARING	DISTANCE
"CA"	S39°26'53"E	30.42'
"CB"	S60°02'57"W	5.02'
"CC"	L.C.S26°05'33"W	222.51' ARC 236.09' R. 199.18'
"CD"	S16°27'22"W	12.14'
"CE"	N73°59'33"W	27.34'
"CF"	N07°51'50"W	197.91' ±
"CG"	N82°18'43"E	133.94' ±

TONITA HENDRICKSON & ROBERT BRICKEL (PART OF LOT D)

FOLTZ REALTY, INC.

CURVE 400

P.I. = 448+78.800
 X = 2,074,565.469
 Y = 257,294.025
 Δ = 49°35'53.58"
 D = 25°00'00"
 T = 105.893'
 L = 198.393'
 R = 229.183'
 LC = N35°15'00"W 192.26'

NOTE: EXISTING R/W FROM RECOVERED P.'S, RR SPIKE AND CERTIFIED SURVEY MAPS AS INDICATED.

