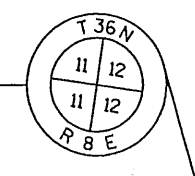
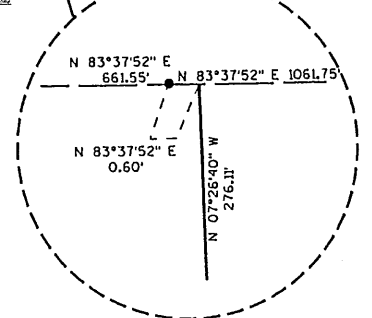
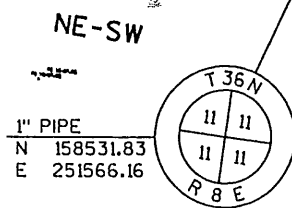
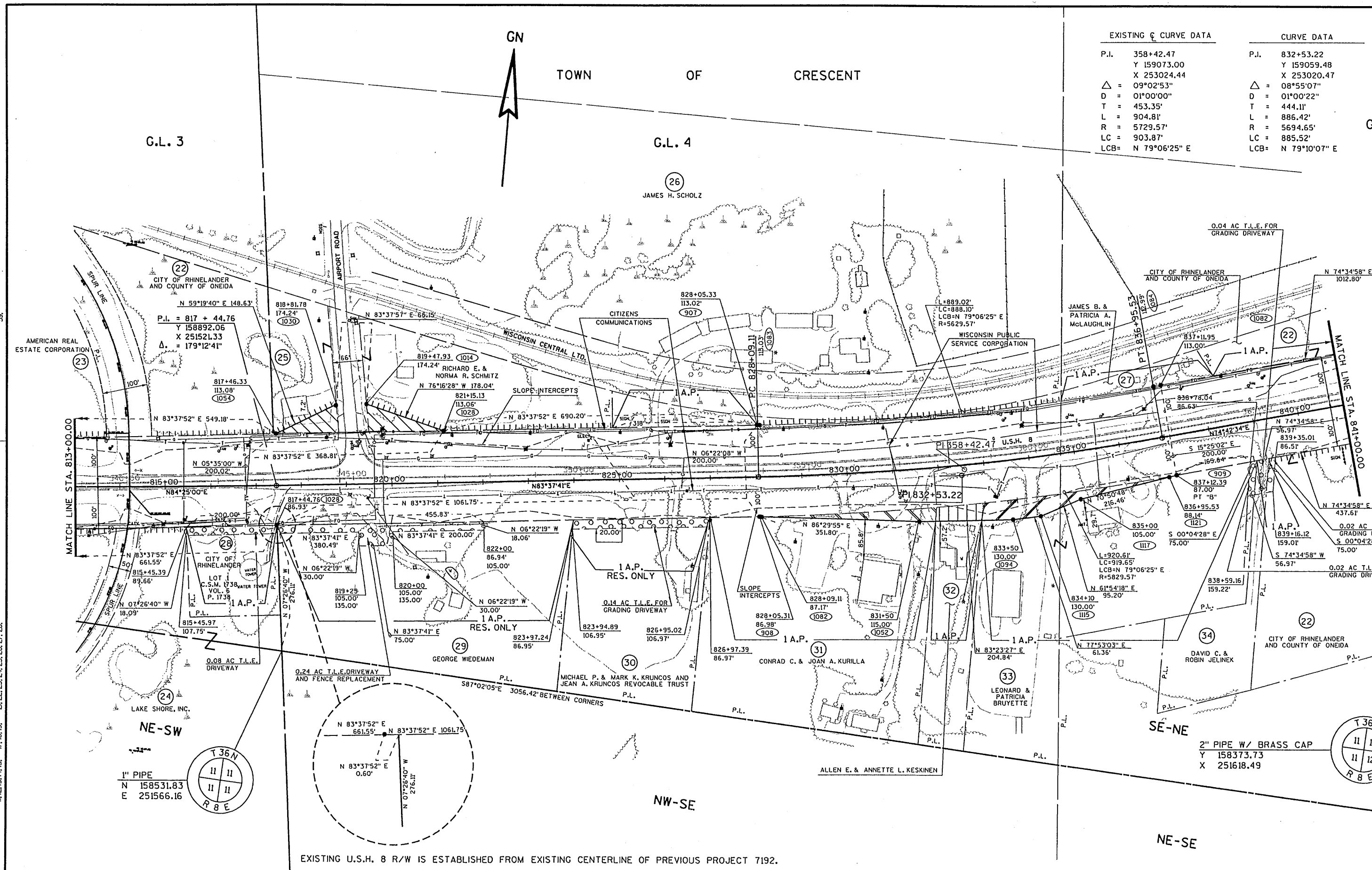




TOWN OF CRESCENT

EXISTING CURVE DATA		CURVE DATA	
P.I.	358+42.47	P.I.	832+53.22
Y	159073.00	Y	159059.48
X	253024.44	X	253020.47
Δ	= 09°02'53"	Δ	= 08°55'07"
D	= 01°00'00"	D	= 01°00'22"
T	= 453.35'	T	= 444.11'
L	= 904.81'	L	= 886.42'
R	= 5729.57'	R	= 5694.65'
LC	= 903.87'	LC	= 885.52'
LCB	= N 79°06'25" E	LCB	= N 79°10'07" E

G.L. 1



EXISTING U.S.H. 8 R/W IS ESTABLISHED FROM EXISTING CENTERLINE OF PREVIOUS PROJECT 7192.

LEVELS ON 11, 12, 13, 14, 15, 17, 18, 19, 21, 22, 23, 24, 25, 26, 27, 28.

REVISION DATE:	JAN. 04, 2001 OCT. 29, 2001 (INC) APRIL 08, 2002 (INC)	SCALE, FEET:	0 100 200	DATE:	JAN 31, 2000	HIGHWAY:	U.S.H. 8	R/W PROJECT NUMBER:	1593-05-21	SHEET NUMBER:	4.7	E
FILE NAME:	ORIGINATOR:	PLOT NAME:	PLOT SCALE:	DATE:	N.A.	COUNTY:	ONEIDA	FEDERAL PROJECT NUMBER:				