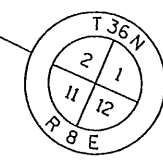
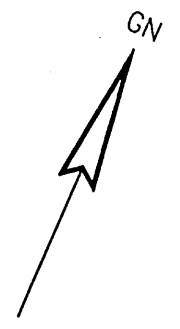


| CURVE DATA | | EXISTING CURVE DATA | |
|------------|-------------|---------------------|-------------|
| P.I. | 860+17.80 | P.I. | 358+42.47 |
| Y | 159789.01 | Y | 159804.88 |
| X | 255688.91 | X | 255678.40 |
| Δ | 44°52'36" | Δ | 44°45'47" |
| D | 02°30'40" | D | 02°30'00" |
| T | 942.31' | T | 943.76' |
| L | 1787.27' | L | 1790.52' |
| R | 2281.87' | R | 2291.83' |
| LC | 1741.93' | LC | 1745.33' |
| LCB | N52°16'16"E | LCB | N52°12'05"E |



ALUMINUM MONUMENT
N 161202.52
E 254583.54

CITY OF RHINELANDER

| SIGN SCHEDULE | |
|---------------|----------------------------|
| (40-1) | NORTHERN ADVERTISING, INC. |
| (48-1) | NORTHERN ADVERTISING, INC. |

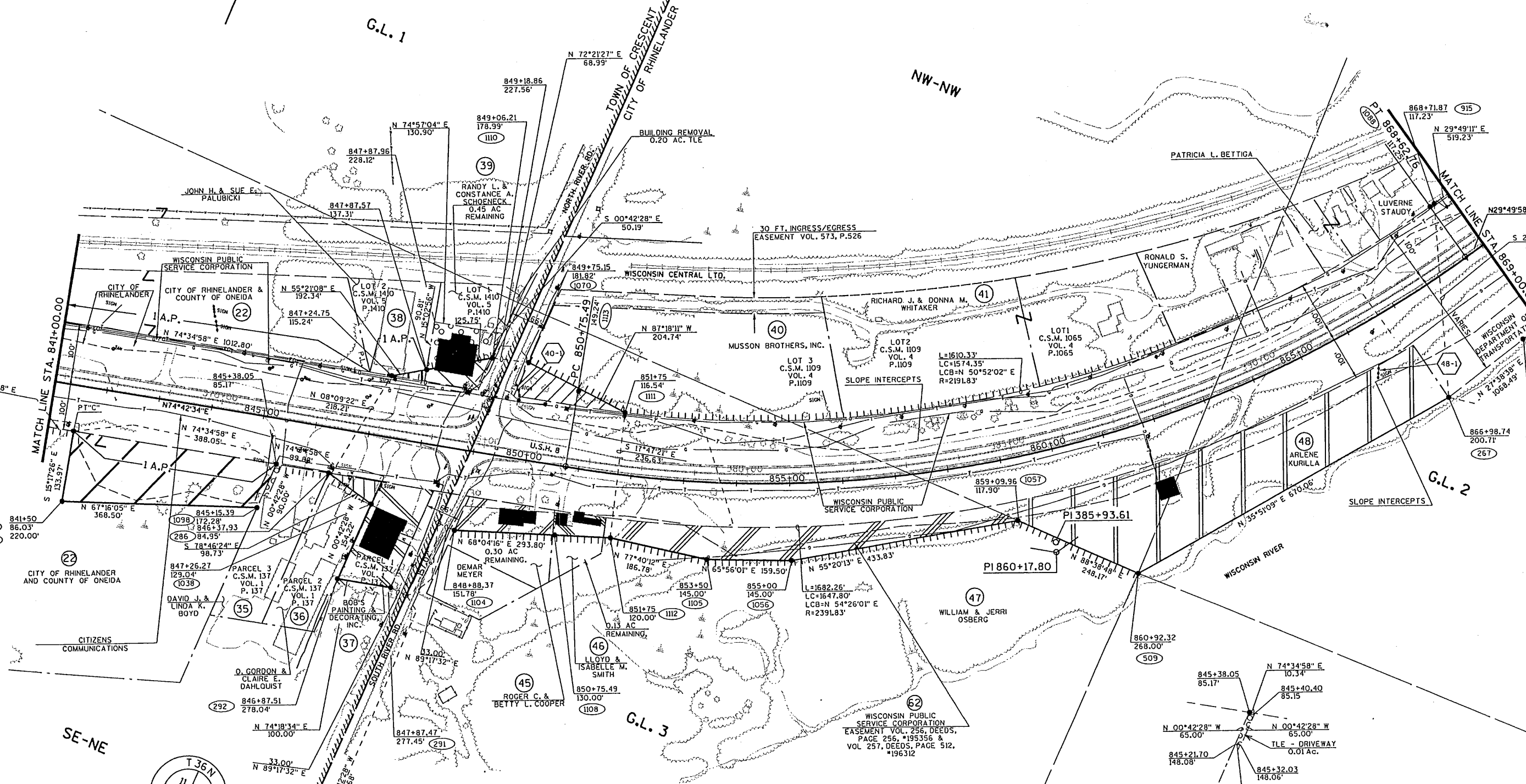
TOWN OF CRESCENT

G.L. 1

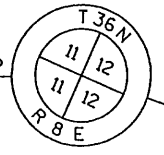
NW-NW

G.L. 2

G.L. 3



2" PIPE W/ BRASS CAP
N 158373.73
E 254618.49



EXISTING N. RIVER RD. & S. RIVER RD. R/W ARE ESTABLISHED FROM GOVERNMENT LAND LINE.
EXISTING U.S.H. 8 R/W IS ESTABLISHED FROM EXISTING CENTERLINE OF PREVIOUS PROJECT #7192.

| | | | | | | | | | | | | |
|----------------|--|--------------|-----------|-------------------------|--------------|----------|----------|---------------------|------------|---------------|-----|---|
| REVISION DATE: | JAN. 04, 2001 OCT. 29, 2001 APRIL 08, 2002 | SCALE, FEET: | 0 100 200 | DATE: | JAN 31, 2000 | HIGHWAY: | U.S.H. 8 | R/W PROJECT NUMBER: | 1593-05-21 | SHEET NUMBER: | 4.8 | E |
| GRID FACTOR: | N.A. | COUNTY: | ONEIDA | FEDERAL PROJECT NUMBER: | | | | | | | | |

LEVELS ON: 11, 12, 13, 14, 15, 17, 18, 19, 21, 22, 23, 24, 25, 26, 27, 28.