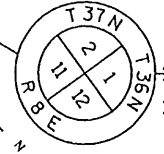


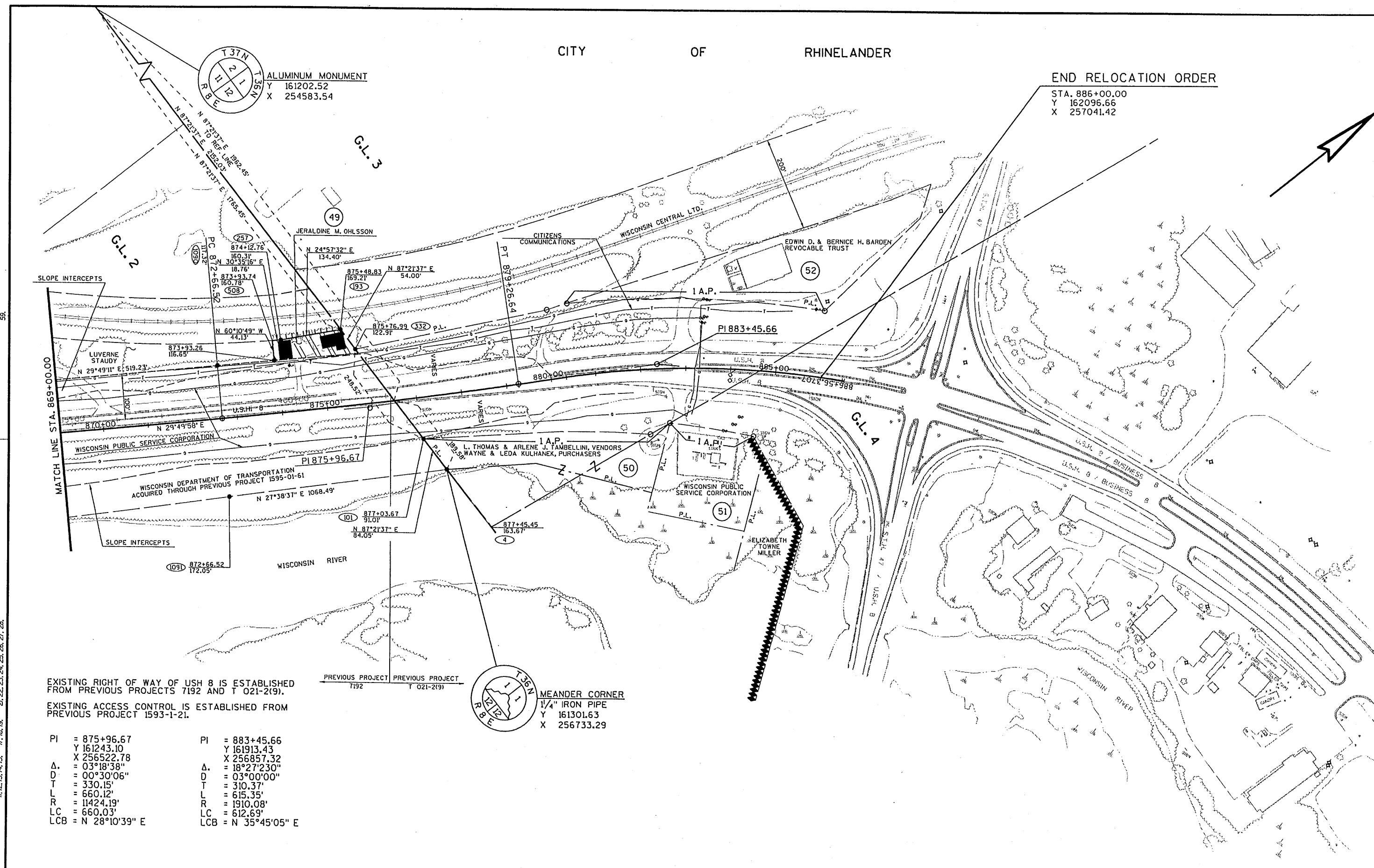
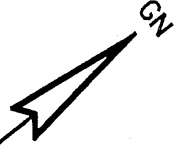
CITY OF RHINELANDER

END RELOCATION ORDER

STA. 886+00.00
Y 162096.66
X 257041.42



ALUMINUM MONUMENT
Y 161202.52
X 254583.54



EXISTING RIGHT OF WAY OF USH 8 IS ESTABLISHED FROM PREVIOUS PROJECTS 7192 AND T 021-2(9).

EXISTING ACCESS CONTROL IS ESTABLISHED FROM PREVIOUS PROJECT 1593-1-21.

PREVIOUS PROJECT 7192 PREVIOUS PROJECT T 021-2(9)



MEANDER CORNER
1/4" IRON PIPE
Y 161301.63
X 256733.29

PI = 875+96.67	PI = 883+45.66
Y 161243.10	Y 161913.43
X 256522.78	X 256857.32
Δ = 03°18'38"	Δ = 18°27'230"
D = 00°30'06"	D = 03°00'00"
T = 330.15'	T = 310.37'
L = 660.12'	L = 615.35'
R = 11424.19'	R = 1910.08'
LC = 660.03'	LC = 612.69'
LCB = N 28°10'39" E	LCB = N 35°45'05" E

11, 12, 13, 14, 15, 17, 18, 19, 21, 22, 23, 24, 25, 26, 27, 28, LEVELS ON

REVISION DATE:	JAN. 04, 2001 OCT. 29, 2001 (INC) APRIL 08, 2002 (INC)	SCALE, FEET:	0 100 200	DATE:	JAN 31, 2000	HIGHWAY:	U.S.H. 8	R/W PROJECT NUMBER:	1593-05-21	SHEET NUMBER:	4.9	E
FILE NAME :	ORIGINATOR :	PLOT NAME :	PLOT SCALE :	GRID FACTOR:	N.A.	COUNTY:	ONEIDA	FEDERAL PROJECT NUMBER:				