

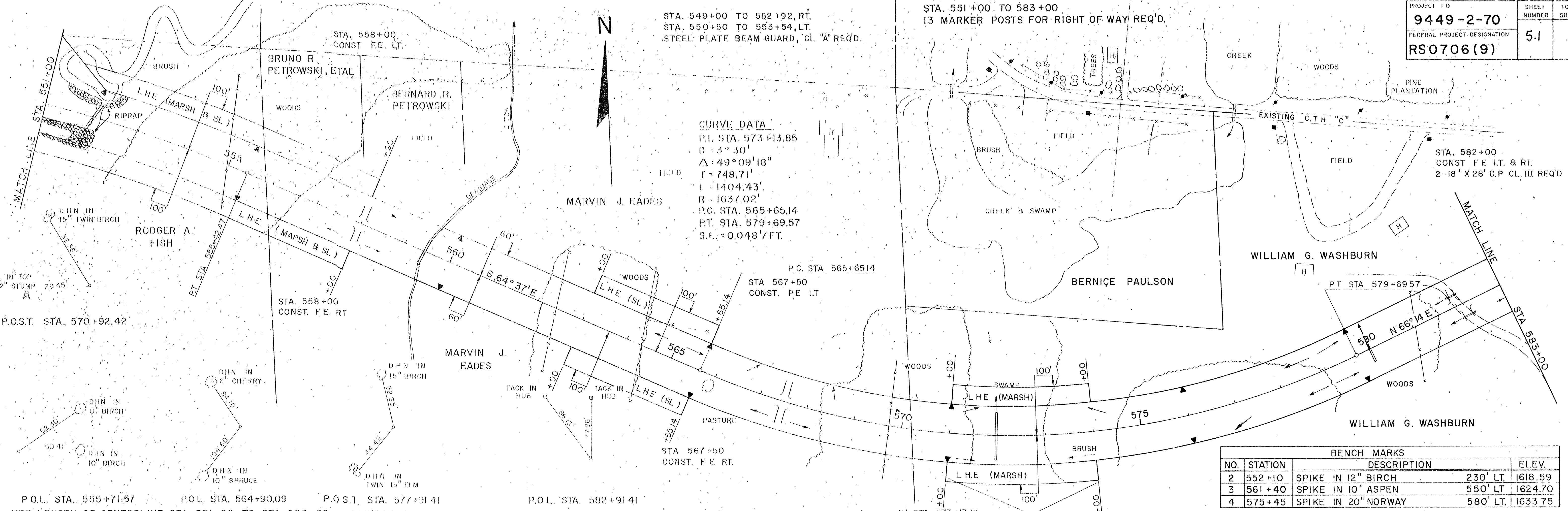
STA. 549+00 TO 552+92, RT.
 STA. 550+50 TO 553+54, LT.
 STEEL PLATE BEAM GUARD, CL. "A" REQ'D.

STA. 551+00 TO 583+00
 13 MARKER POSTS FOR RIGHT OF WAY REQ'D.

STA. 582+00
 CONST. F.E. LT. & RT.
 2-18" X 28" C.P. CL. III REQ'D

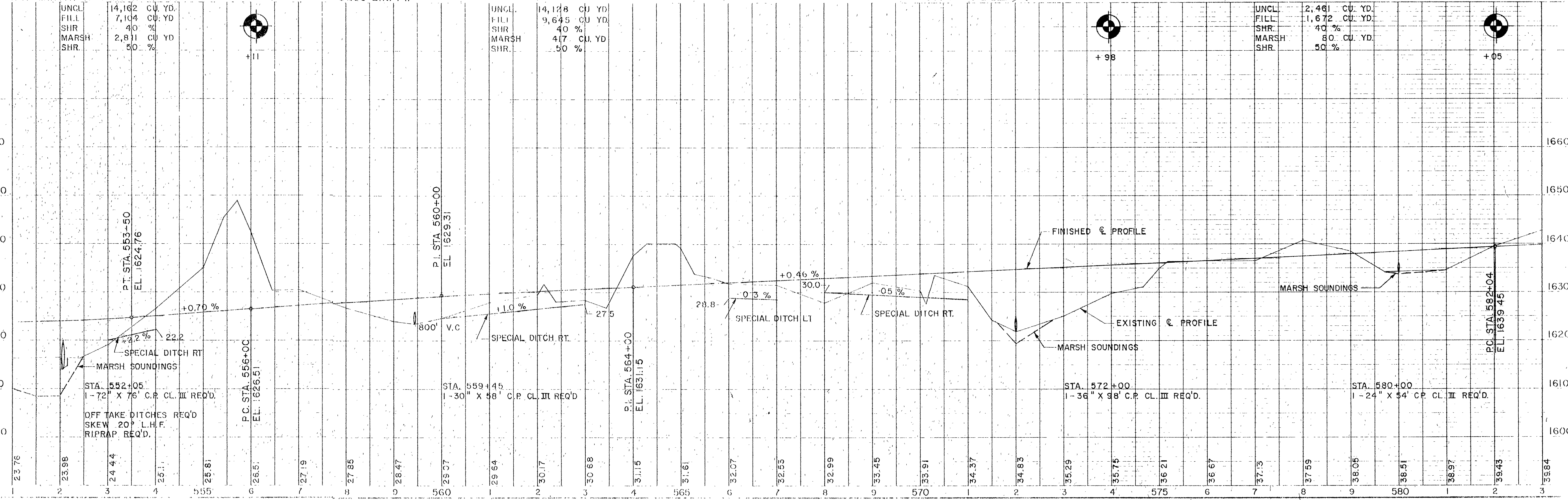
CURVE DATA
 P.I. STA. 573+13.85
 D = 3° 30'
 Δ = 49° 09' 18"
 L = 748.71'
 R = 1637.02'
 P.C. STA. 565+65.14
 P.T. STA. 579+69.57
 S.L. = 0.048 1/FT.

BENCH MARKS			
NO.	STATION	DESCRIPTION	ELEV.
2	552+10	SPIKE IN 12" BIRCH	230' LT. 1618.59
3	561+40	SPIKE IN 10" ASPEN	550' LT. 1624.70
4	575+45	SPIKE IN 20" NORWAY	580' LT. 1633.75



P.O.L. STA. 555+71.57 P.O.L. STA. 564+90.09 P.O.S.T. STA. 577+91.41 P.O.L. STA. 582+91.41

NET LENGTH OF CENTERLINE STA 551+00 TO STA. 583+00 = 3200' LIN. FT.



PLAN
 DATE 5/7/72
 BY K.S.
 CHECKED BY K.S.
 APPROVED BY K.S.

PROFILE
 DATE 5/7/72
 BY K.S.
 CHECKED BY K.S.
 APPROVED BY K.S.

PLATE 1, PLAN PROFILE
 NUMBER & LETTER ID

STA. 583+00 TO 610+00
13 MARKER POSTS FOR RIGHT OF WAY REQ'D.

STA 588+00 LT
CONST TYPE "C" INTERSECTION
1-24" X 60' C.P. CL III REQ'D

STA 592+00 BK
RESTORE FE LT

STA 17+30, TN RD.
RESTORE FE LT

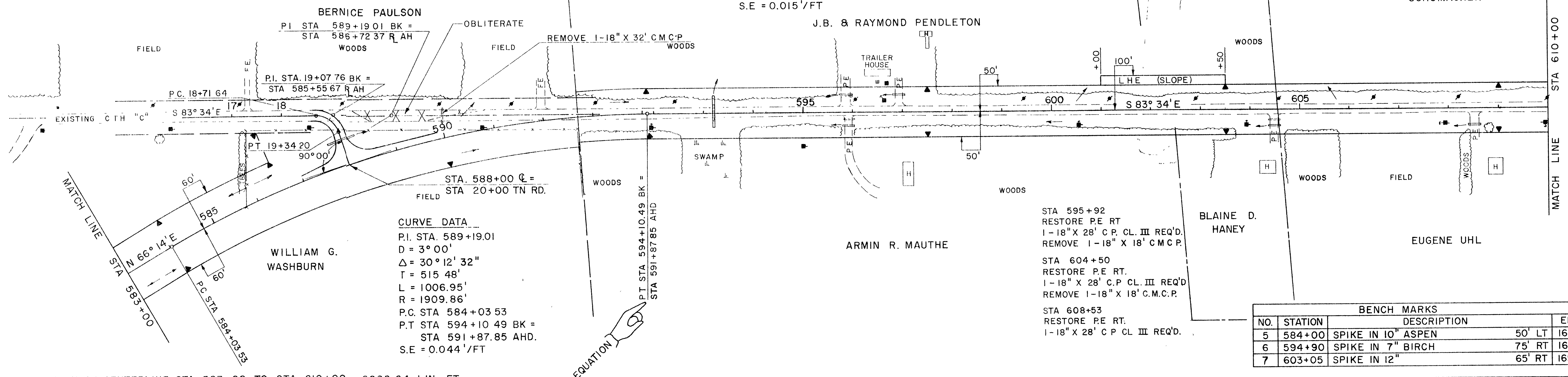
CURVE DATA - TN. RD.
P.I. STA 19+07.76
D = 114° 35' 30"
Δ = 71° 40' 55"
T = 36.12'
L = 62.55'
R = 50'
P.C. STA. 18+71.64
P.T. STA. 19+34.20
S.E. = 0.015'/FT

STA 595+87
RESTORE PE LT
1-18" X 28' C.P. CL III REQ'D
REMOVE 1-18" X 22' C.M.C.P.

STA 596+94
RESTORE PE LT
1-18" X 28' C.P. CL III REQ'D

FRANCES M
SCHUMACHER

PLAN
SHEET NO. 5.2
DATE 11/15/00
PROJECT NO. 9449-2-70
SHEET NO. 5.2
TOTAL SHEETS 9



CURVE DATA
P.I. STA. 589+19.01
D = 3° 00'
Δ = 30° 12' 32"
T = 515.48'
L = 1006.95'
R = 1909.86'
P.C. STA 584+03.53
P.T. STA 594+10.49 BK =
STA 591+87.85 AHD.
S.E. = 0.044'/FT

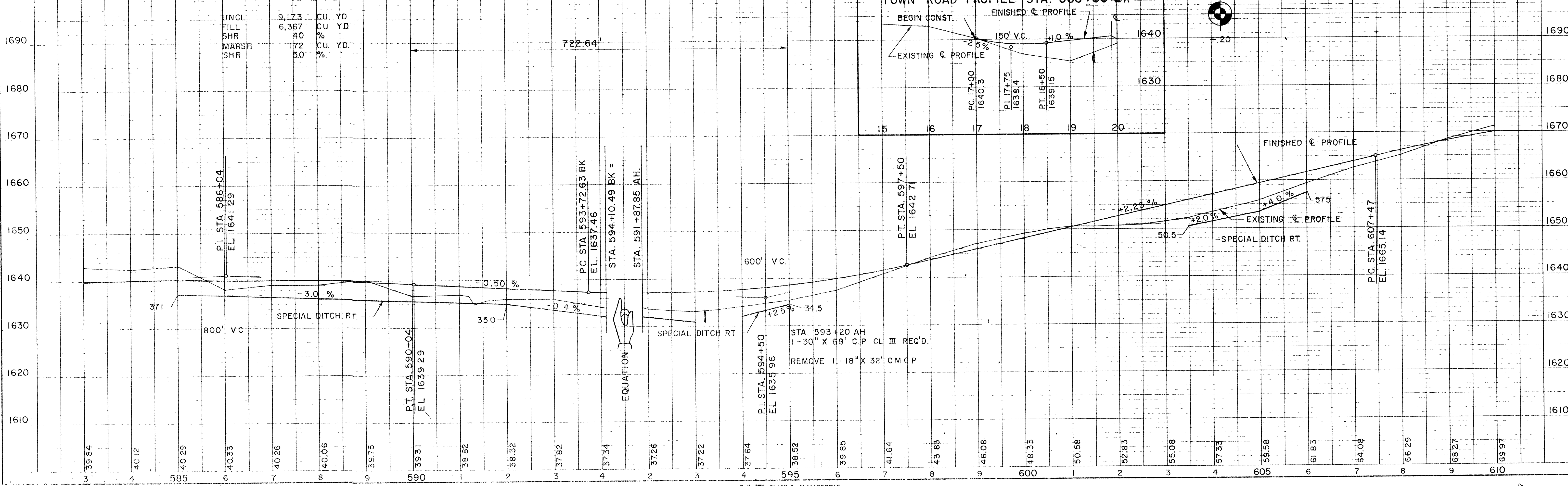
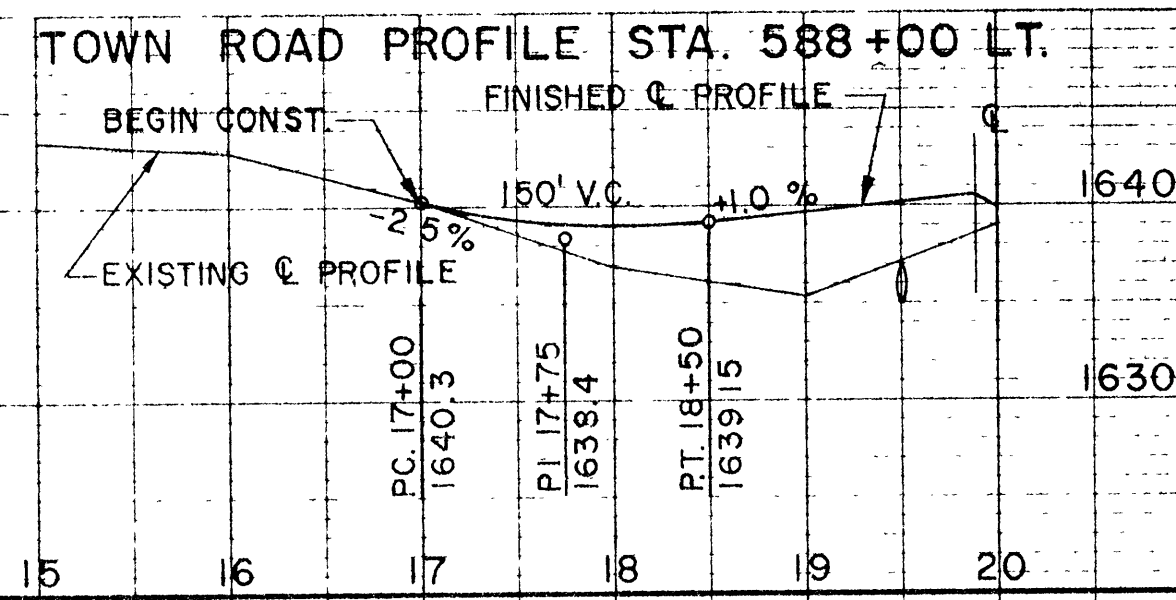
STA 595+92
RESTORE PE RT
1-18" X 28' C.P. CL III REQ'D
REMOVE 1-18" X 18' C.M.C.P.

STA 604+50
RESTORE PE RT.
1-18" X 28' C.P. CL III REQ'D
REMOVE 1-18" X 18' C.M.C.P.

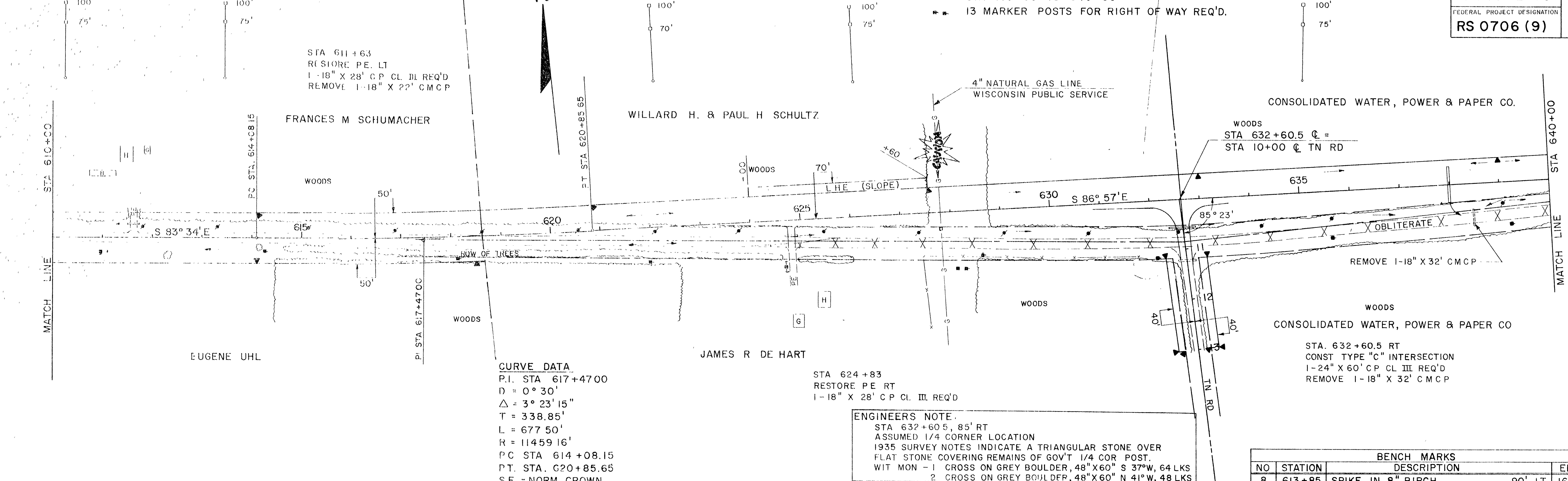
STA 608+53
RESTORE PE RT.
1-18" X 28' C.P. CL III REQ'D.

BENCH MARKS			
NO.	STATION	DESCRIPTION	ELEV
5	584+00	SPIKE IN 10" ASPEN	50' LT 1635.89
6	594+90	SPIKE IN 7" BIRCH	75' RT 1637.42
7	603+05	SPIKE IN 12"	65' RT 1652.20

NET LENGTH OF CENTERLINE STA 583+00 TO STA 610+00 = 2922.64 LIN. FT.



P.O.T. STA. 611+17.2 P.C. STA. 614+08.15 P.I. STA. 620+85.66 P.O.T. STA. 625+72.2 STA 610+00 TO 640+00 P.O.T. STA. 634+20.4



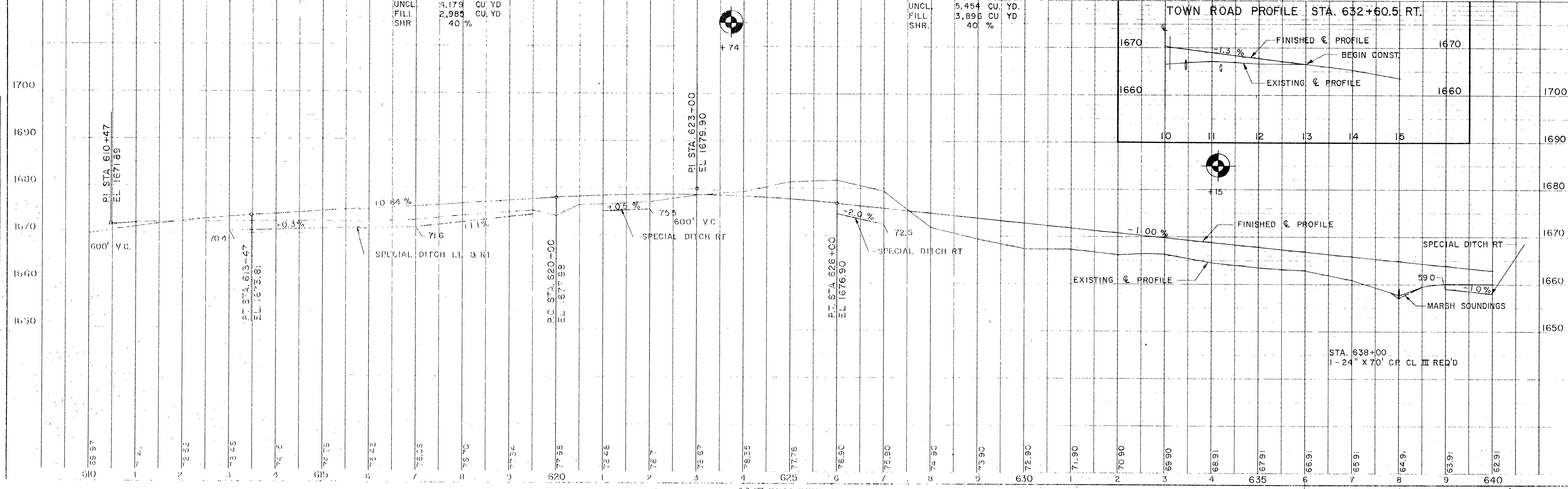
CURVE DATA
P.I. STA 617+47.00
D = 0° 30'
Δ = 3° 23' 15"
T = 338.85'
L = 677.50'
R = 11459.16'
P.C. STA 614+08.15
P.T. STA. 620+85.65
S.E. = NORM CROWN

STA 624+83
RESTORE PE RT
1-18" X 28" CP CL III REQ'D

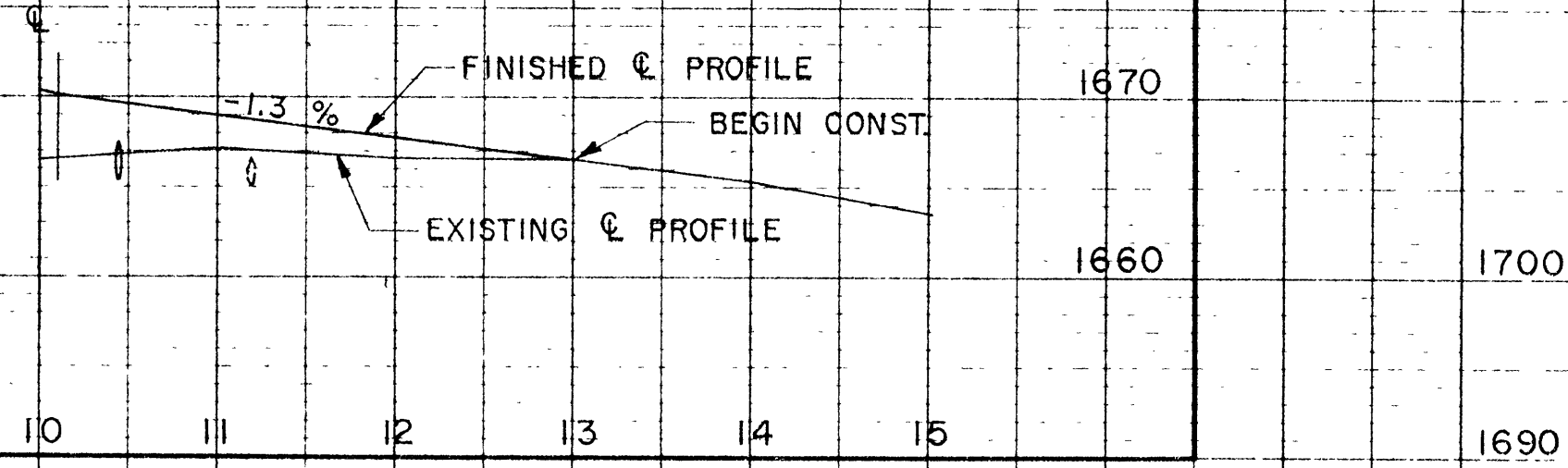
ENGINEERS NOTE:
STA 632+60.5, 85' RT
ASSUMED 1/4 CORNER LOCATION
1935 SURVEY NOTES INDICATE A TRIANGULAR STONE OVER
FLAT STONE COVERING REMAINS OF GOVT 1/4 COR POST.
WIT MON - 1 CROSS ON GREY BOULDER, 48" X 60" S 37° W, 64 LKS
2 CROSS ON GREY BOULDER, 48" X 60" N 41° W, 48 LKS
STA 632+60, 4 LANDMARK REFERENCE MONUMENTS REQUIRED

NO	STATION	DESCRIPTION	ELEV.
8	613+85	SPIKE IN 8" BIRCH	90' LT 1674.46
9	623+90	SPIKE IN 18" BASSWOOD	70' RT 1681.28
10	632+80	SPIKE IN 7" BALSAM	125' RT 1667.83

NET LENGTH OF CENTERLINE STA 610+00.00 TO STA 640+00.00 = 3000.00 LIN FT.



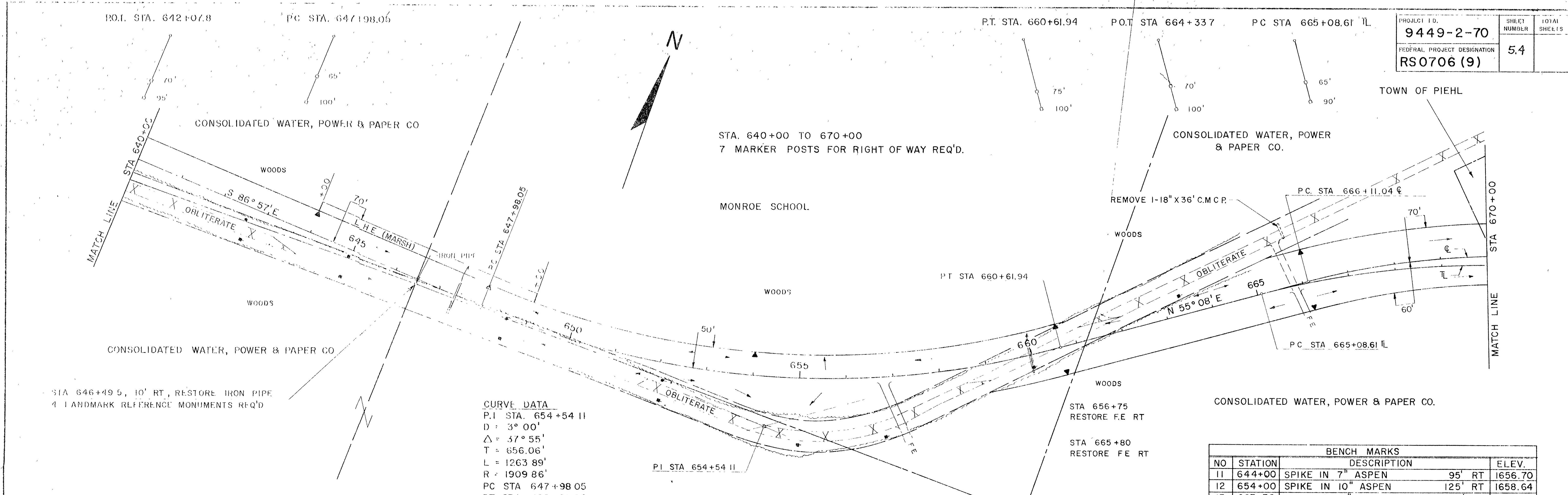
TOWN ROAD PROFILE STA. 632+60.5 RT.



STA. 638+00
1-24" X 70' CP CL III REQ'D

R304

PROJECT I.D.	9449-2-70	SHEET NUMBER	5.4	TOTAL SHEETS	
FEDERAL PROJECT DESIGNATION	RS0706 (9)				



CURVE DATA
 P.I. STA. 654+54.11
 D = 3° 00'
 Δ = 37° 55'
 T = 656.06'
 L = 1263.89'
 R = 1909.86'
 PC STA 647+98.05
 PT STA 660+61.94
 SE = 0.0411/FT.

NET LENGTH OF CENTERLINE STA 640+00 TO STA. 670+00 = 3000 LIN FT

UNCL	4,814	CU YD.
FILL	12,428	CU YD.
SHR	40	%
MARSH	1,277	CU YD.
SHR	50	%
BORROW	14,500	CU YD.

BENCH MARKS			
NO	STATION	DESCRIPTION	ELEV.
11	644+00	SPIKE IN 7" ASPEN 95' RT	1656.70
12	654+00	SPIKE IN 10" ASPEN 125' RT	1658.64
13	663+30	SPIKE IN 9" ASPEN 100' LT	1666.65

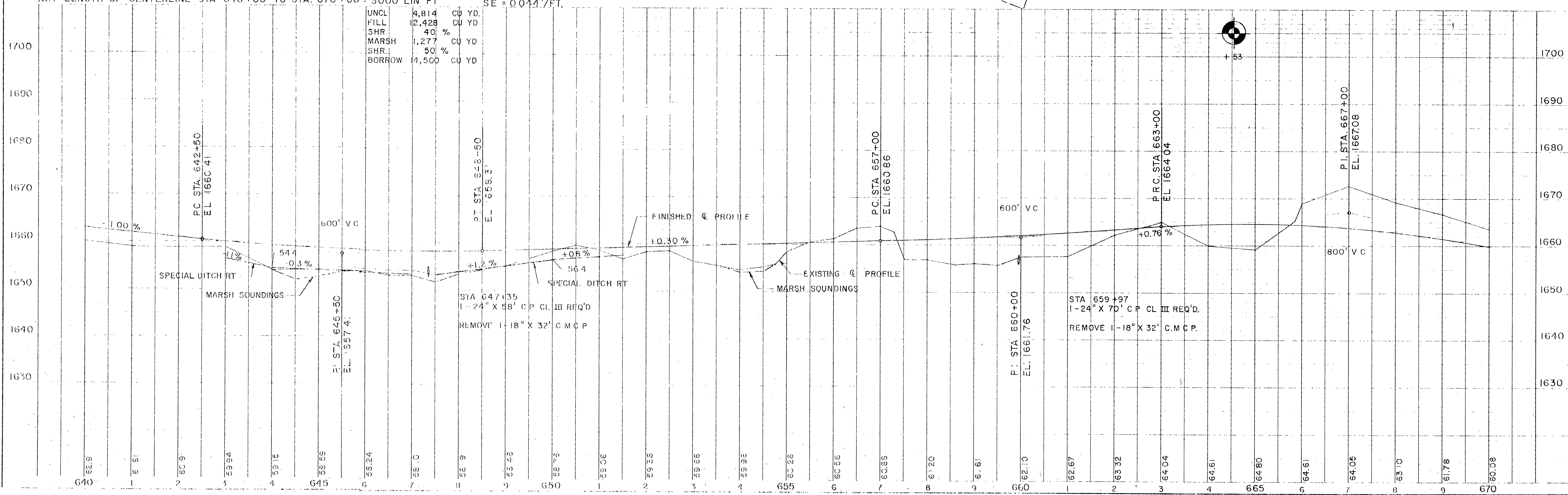
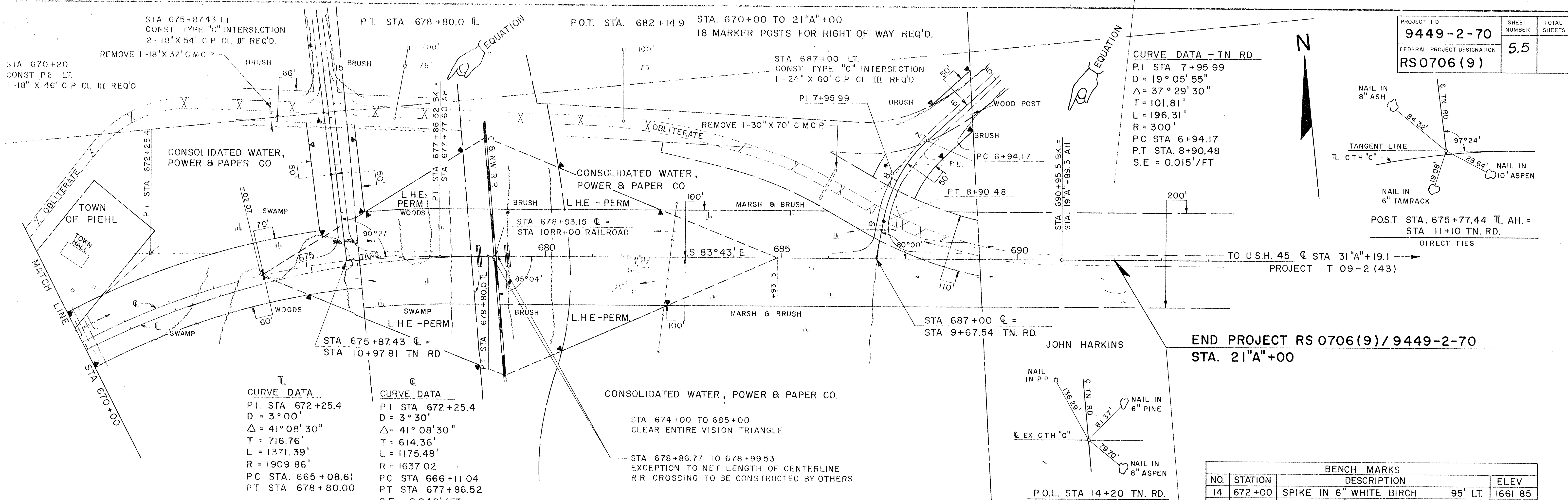


PLATE 1, PLAN PROFILE
 660117 & 655 & 650

PROJECT I.D.	9449-2-70	SHEET NUMBER	5.5	TOTAL SHEETS	
FEDERAL PROJECT DESIGNATION	RS 0706 (9)				



BENCH MARKS			
NO.	STATION	DESCRIPTION	ELEV
14	672+00	SPIKE IN 6" WHITE BIRCH	95' LT. 1661.85
15	680+65	SPIKE IN 6" TAMARACK	95' RT. 1643.77

