

INDEX OF SHEETS

- SHEET NO. 1 TITLE
- SHEET NO. 2 TYPICAL CROSS SECTIONS
- SHEET NO. 2 ESTIMATE OF QUANTITIES
- SHEET NO. — MISCELLANEOUS QUANTITIES
- SHEET NO. — RIGHT OF WAY PLAT
- SHEET NO. 3 PLAN AND PROFILE STA. 238+73.5 TO STA. 239+26.50
- SHEET NO. — STANDARD DETAILS
- SHEET NO. 4-6 DRAINAGE STRUCTURES
- SHEET NO. — CROSS SECTIONS

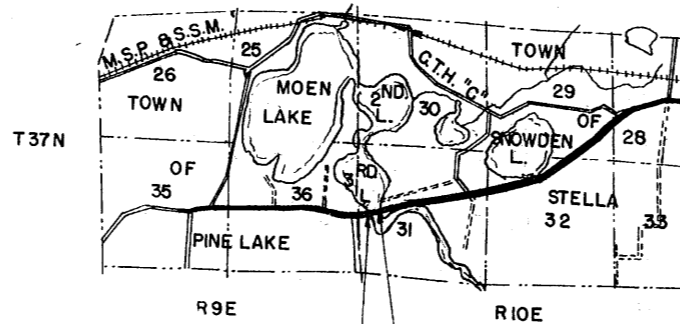


STATE OF WISCONSIN
STATE HIGHWAY COMMISSION OF WISCONSIN

PLAN AND PROFILE OF PROPOSED
RHINELANDER-GAGEN ROAD
NORTH PELICAN RIVER BRIDGE
C.T.H. "C" — ONEIDA COUNTY
PROJECT S0706 (4)

COUNTY AND HIGHWAY	ROUTE AND SECTION	CLASS AND AGREEMENT		FEDERAL DIVISION OFFICE	SHEET NUMBER	TOTAL SHEETS
		STATE	FEDERAL			
43.6	706.0		11.4	WIS. 4	1	6

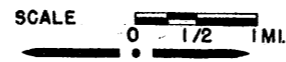
SCALES { PLAN 1 IN. = 100 FT.
PROFILE HOR. 1 IN. = 100 FT. VERT. 1 IN. = 10 FT.
CROSS SECTIONS HOR. 1 IN. = 5 FT. VERT. 1 IN. = 5 FT.



STA. 239+26.5 END OF PROJ. S 0706(4)
=STA. 239+26.5 PROJ. S 0706(3)
2085 FEET NORTH & 735 FEET EAST
OF THE S.W. CORNER OF SEC. 31, T37N, R10 E.

STA. 238+73.5 BEGINNING OF PROJ. S 0706(4)
=STA. 238+73.5 PROJ. S 0706(3)
2055 FEET NORTH & 690 FEET EAST
OF THE S.W. COR. OF SEC. 31, T37 N., R 10 E.

LAYOUT



TOTAL NET LENGTH OF CENTERLINE = 0.010 MI.

CONVENTIONAL SIGNS

STATE LINE	CULVERTS IN PLACE	
COUNTY LINE	CULVERTS REQUIRED	
TOWNSHIP OR RANGE LINE	DROP INLET	
SECTION LINE	POWER POLE	
NEW RIGHT OF WAY LINE	TELEPHONE OR TELEGRAPH POLE	
PRESENT RIGHT OF WAY LINE	RIGHT OF WAY MARKERS	
WIRE FENCE { WOVEN	REFERENCE STAKE FOR HUBS ONLY	
{ BARBED	MARSH	
LOT LINE	HEDGE	
CORPORATE OR CITY LIMITS	TREES	
PROPERTY LINE		
TRAVELED WAY OR P.E.	GROUND ELEVATION	DATUM LINE 73.9
RAILROADS	GRADE ELEVATION	DATUM LINE 75.16
BASE OR SURVEY LINE		

STATE HIGHWAY
COMMISSION OF WISCONSIN
MADISON, WIS.

SURVEYOR J. KAY NOTE BOOK IRM
DIVISION COMPUTER L.M.P. M. O. CHECKER
DISTRICT CHECKER H.V.D. CORRECT.

CORRECT:
DATE 3/9/60 Max Juttel
DISTRICT ENGINEER

RECOMMENDED FOR APPROVAL:
DATE 3/22/60 J. J. Pelly
ENGINEER OF DESIGN

APPROVED:
DATE 3/24/60 E.C. Rostrom
STATE HIGHWAY ENGINEER

DEPARTMENT OF COMMERCE
BUREAU OF PUBLIC ROADS

APPROVED: _____ DATE _____
DISTRICT ENGINEER

S0706(4)

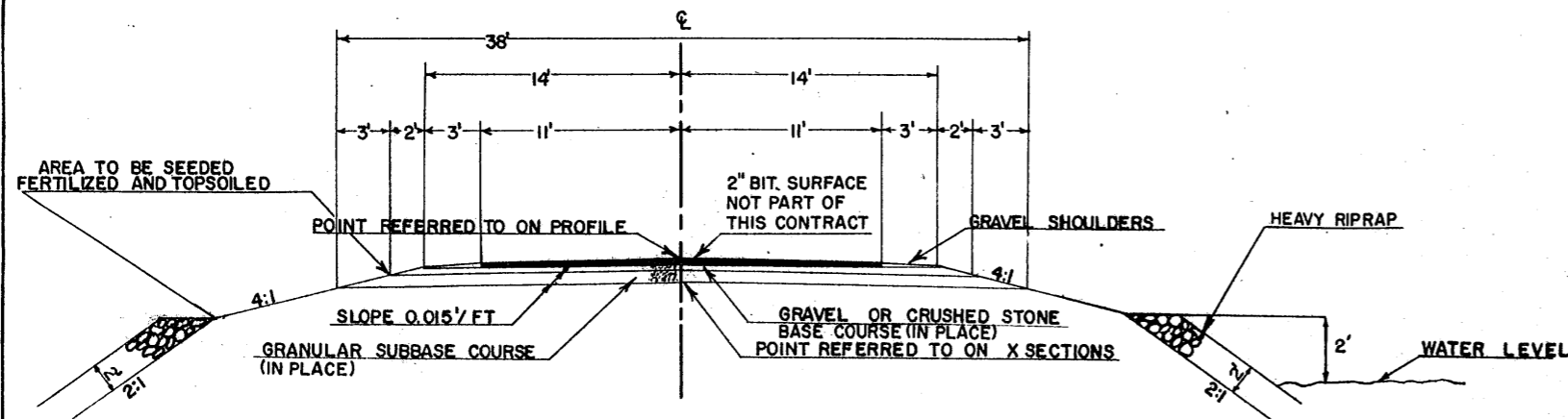
ESTIMATE OF QUANTITIES

CONTRACT NO. 1

PROJECT	SHEET NUMBER	TOTAL SHEETS
S 0706 (4)	2	6

THIS PROJECT IS TO BE EXECUTED UNDER THE STANDARD SPECIFICATIONS FOR ROAD AND BRIDGE CONSTRUCTION OF THE STATE HIGHWAY COMMISSION OF WISCONSIN - EDITION OF 1957
 APPROVED AUGUST 9, 1957 AND SPECIAL PROVISIONS AS ATTACHED TO PROPOSALS

STATION TO STATION	NET LENGTH OF CENTER LINE	CLEARING	GRUBBING	EXCAVATION				SAND GRAVEL FILL	FINISHING ROADWAY	OBLITERATING OLD ROAD	GRAVEL OR CRUSHED STONE		CULVERT PIPE				GUARD FENCE		MARKER POSTS FOR R/W	CONCRETE MASONRY BRIDGES	BAR STEEL REINFORCEMENT BRIDGES	CAST IN PLACE CONCRETE TEST PILING	CAST IN PLACE CONCRETE PILING DELIVERED	CAST IN PLACE CONCRETE PILING DRIVEN	STEEL RAILING	HEAVY RIPRAP	PRESTRESSED GIRDERS (SLAB TYPE)	TOPSOIL		FERTILIZER	SEEDING		
				2107-1	210-	210-	2110-1				220	23	2512-1	2523-	2523-	2523-3	2523-4	2401-1										2408-1	2505-1			2505-2	2505-3
UNIT	LIN. FT.			C.Y.	C.Y.	C.Y.	C.Y.	STA.	STA.	C.Y.	C.Y.	LIN. FT.	LIN. FT.	LIN. FT.	LIN. FT.	LIN. FT.	C.Y.	LIN. FT.	EACH	EACH	C.Y.	LB.	L.S.	LIN. FT.	LIN. FT.	LIN. FT.	C.Y.	EACH	SQ. YD.	SQ. YD.	CWT.	SQ. YD.	
STA. 238+73.50 - STA. 239+26.50	53.0			40																	52.7	2510	1	315	315		132	110					

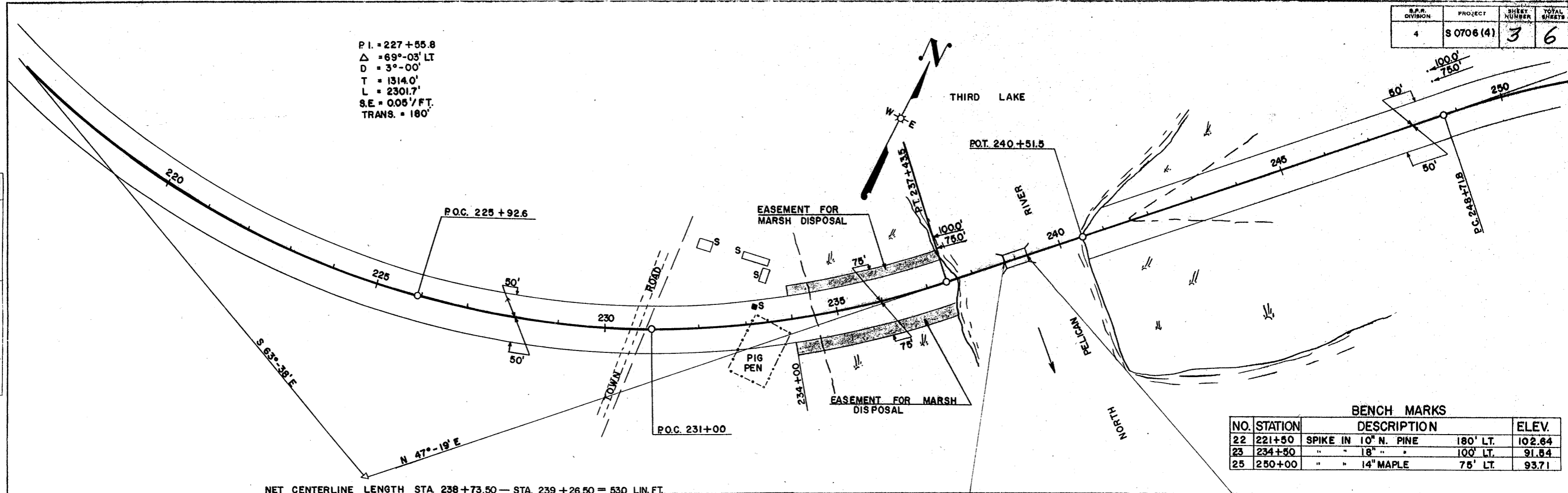


ULTIMATE FINISHED SECTION
 FOR BRIDGE APPROACH
 STA. 237+50 - STA. 241+00

S.P. DIVISION	PROJECT	SHEET NUMBER	TOTAL SHEETS
4	S 0706 (4)	3	6

P.I. = 227 + 55.8
 $\Delta = 69^{\circ}-03' \text{ LT}$
 $D = 3^{\circ}-00'$
 $T = 1314.0'$
 $L = 2301.7'$
 $S.E. = 0.05' / \text{FT.}$
 $\text{TRANS.} = 180'$

DATE 3-58
 BY KAY
 N. J.
 SURVEYED
 PLOTTED
 CHECKED
 NOTE BOOK
 NO. 18M

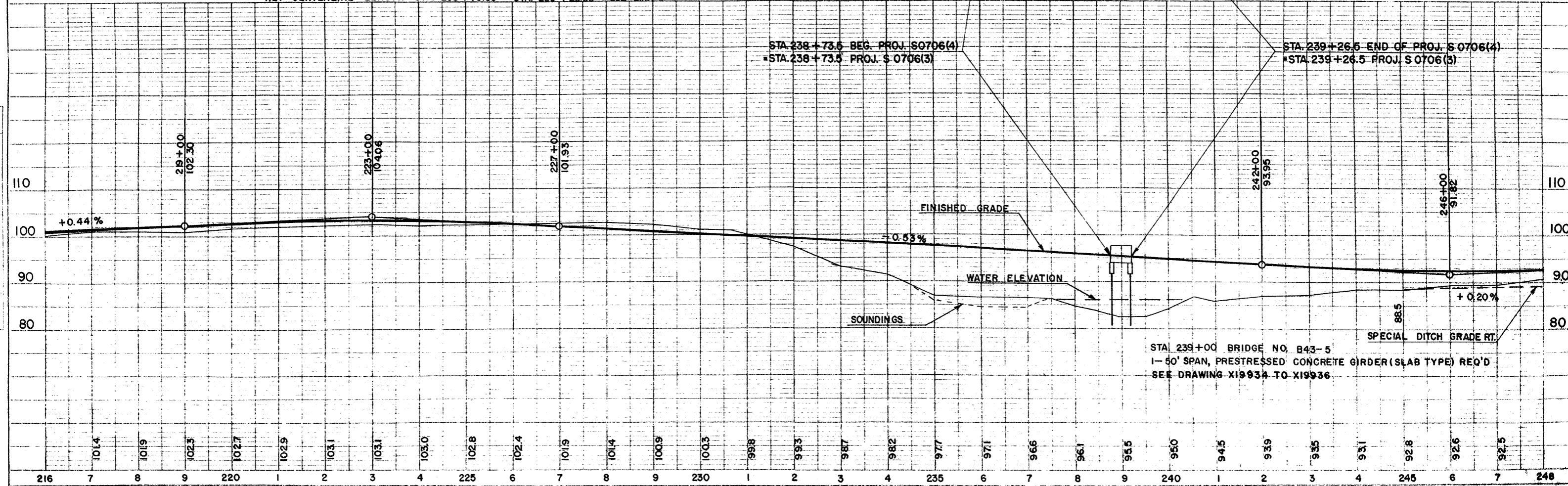


BENCH MARKS

NO.	STATION	DESCRIPTION	ELEV.
22	221+50	SPIKE IN 10" N. PINE 180' LT.	102.64
23	234+50	" " 18" " 100' LT.	91.84
25	250+00	" " 14" MAPLE 76' LT.	93.71

NET CENTERLINE LENGTH STA 238 + 73.50 — STA. 239 + 26.50 = 530. LIN. FT.

DATE
 BY
 PROFILE
 SURVEYED
 PLOTTED
 CHECKED
 NOTE BOOK
 NO. 18M

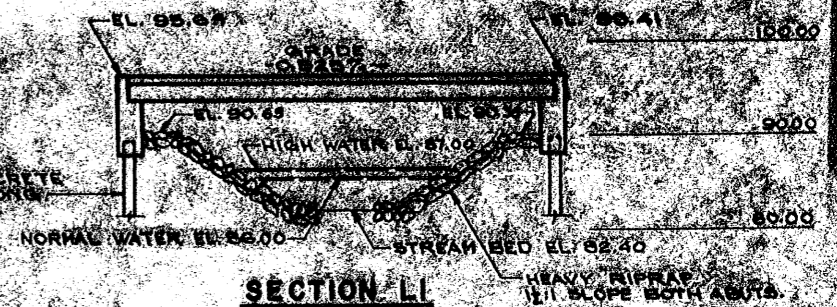
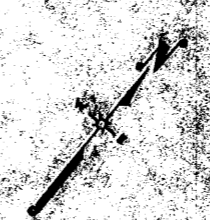


STA 239+00 BRIDGE NO. B43-5
 1-50' SPAN, PRESTRESSED CONCRETE GIRDER (SLAB TYPE) REQ'D
 SEE DRAWING X19934 TO X19936

BENCH MARK

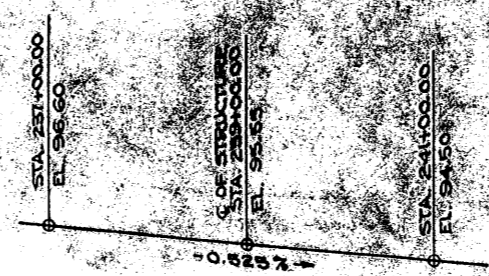
NO.	STATION	DESCRIPTION	ELEV.
25	241.500	SPIRE IN 16" NORWAY PINE 100 FT.	91.84

COUNTY & HIGHWAY	ROUTE & SECTION	CLASS. & AGREEMENT	FEDERAL	D. R. N. DIVISION	PROJECT	SHEET NO.	TOTAL SHEETS
43.6	706.0	11.3			507066A	7	6

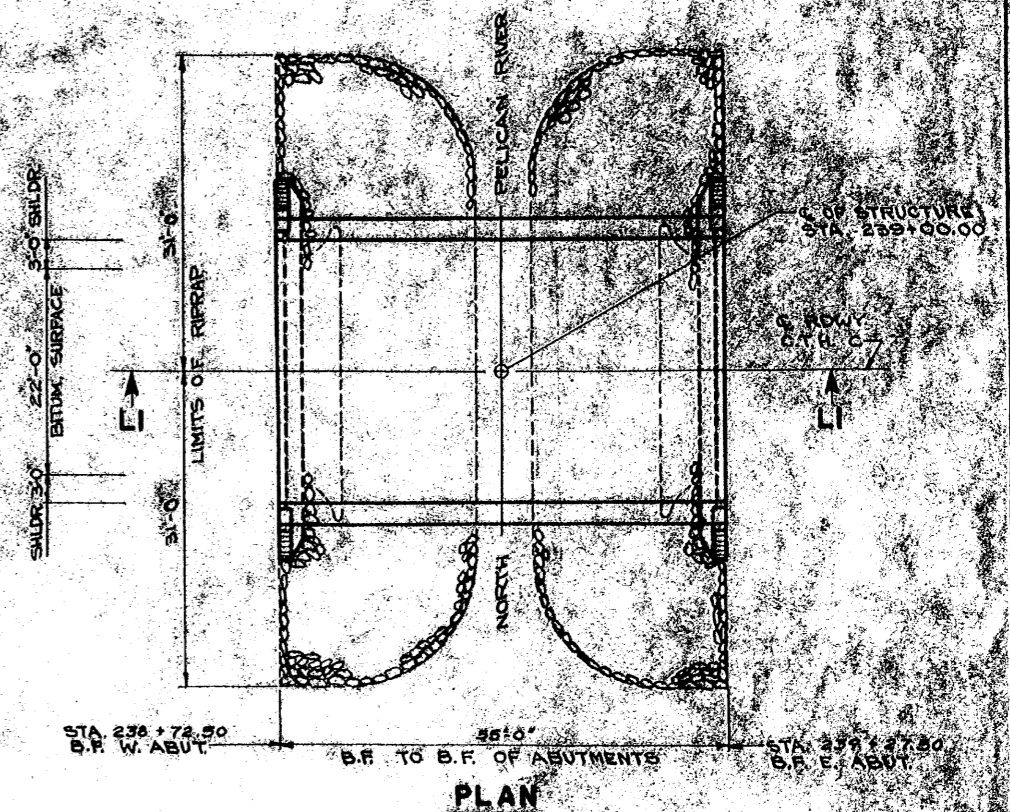


GENERAL NOTES

DRAWINGS SHALL NOT BE SCALED.
 CONCRETE MASONRY SHALL BE GRADE "A".
 BEVEL EXPOSED EDGES OF CONCRETE, UNLESS OTHERWISE SPECIFIED.
 BAR STEEL REINFORCEMENT SHALL BE IMBEDDED 2" CLEAR UNLESS OTHERWISE SHOWN OR NOTED.
 THE USE OF STRUCTURAL GRADE BAR STEEL REINFORCEMENT IS PROHIBITED.
 PILES FOR THE ABUTMENTS SHALL BE 12" CAST-IN-PLACE CONCRETE PILING, EST. 35'-0" LONG AND DRIVEN TO A MINIMUM BEARING VALUE OF 35 TONS PER PILE.
 THE FRONT FACE OF ABUTMENTS SHALL BE COVERED WITH HEAVY RIPRAP AS SHOWN IN SECTION "A1" ON THIS SHEET, AND TO THE EXTENT SHOWN IN "PLAN" ON THIS SHEET.



GRADE LINE



PLAN

TOTAL ESTIMATED QUANTITIES

BID ITEMS	UNIT	SUPER	ABUTS.	TOTAL
EXCAVATION FOR STRUCTURES	C.Y.		40	40
CONCRETE MASONRY	C.Y.	5.8	43.9	49.7
BAR STEEL REINFORCEMENT	L.B.S.	300	2,210	2,510
CAST-IN-PLACE CONCRETE PILING 12x12	L.F.			1
CAST-IN-PLACE CONCRETE PILING DEL.	L.F.		315	315
CAST-IN-PLACE CONCRETE PILING DR.	L.F.		315	315
STEEL PILING	L.F.	132		132
HEAVY RIPRAP	C.Y.		110	110
PRESTRESSED CONCRETE (SLAB TYPE)	EA.	10		10
NON-BID ITEMS				
FILLER	SIZE	1/2"		1/2"

LIST OF DRAWINGS

- 1. GENERAL PLAN X1555A
- 2. SUPERSTRUCTURE X1555B
- 3. ABUTMENTS X1555C

STATE HIGHWAY COMMISSION OF WISCONSIN

GENERAL PLAN

PROJECT NO. 507066A

SECTION 11.3

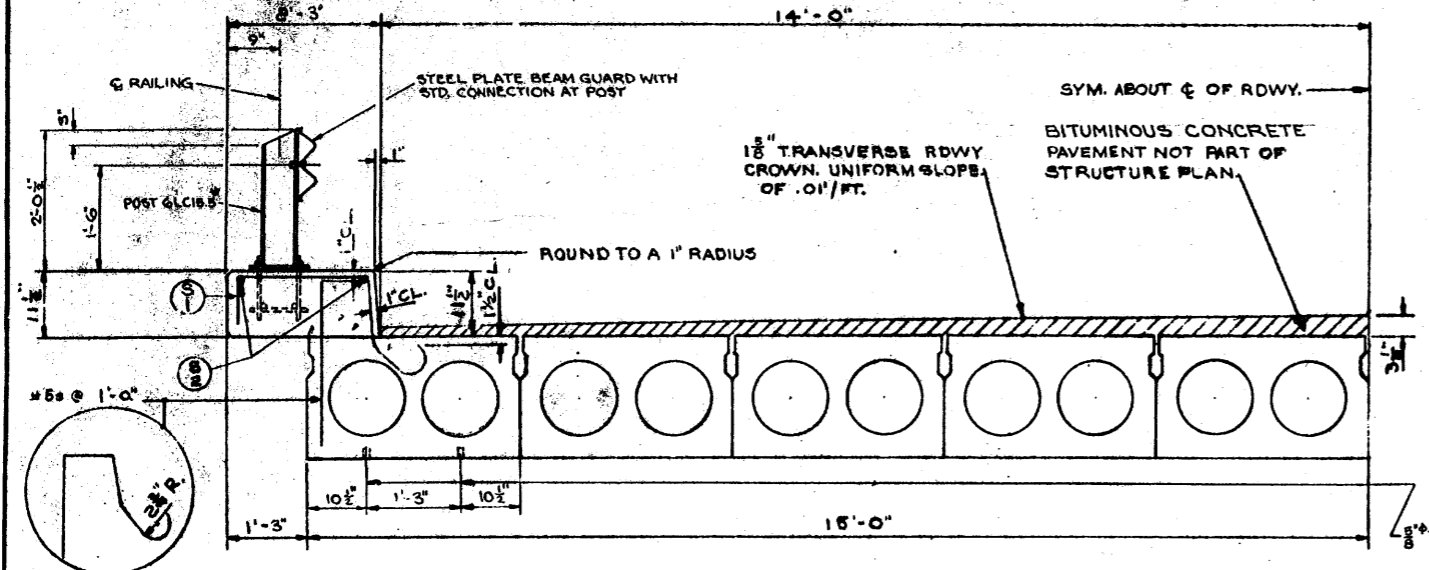
DATE: 11/15/55

DESIGNED BY: J. B. ...

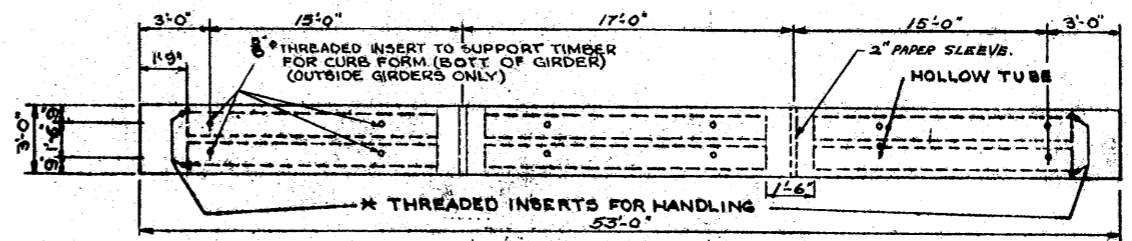
CHECKED BY: ...

APPROVED BY: ...

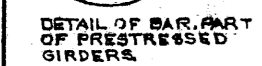
* DRIVE TEST PILE AT LOCATION OF EITHER EXTERIOR PILE IN WEST ABUTMENT.



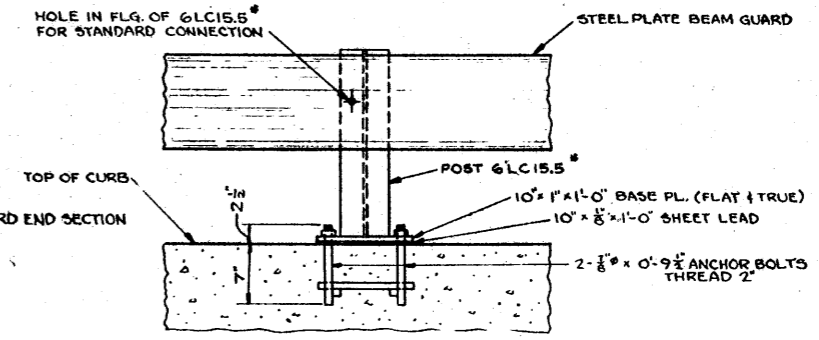
HALF CROSS SECTION OF ROADWAY



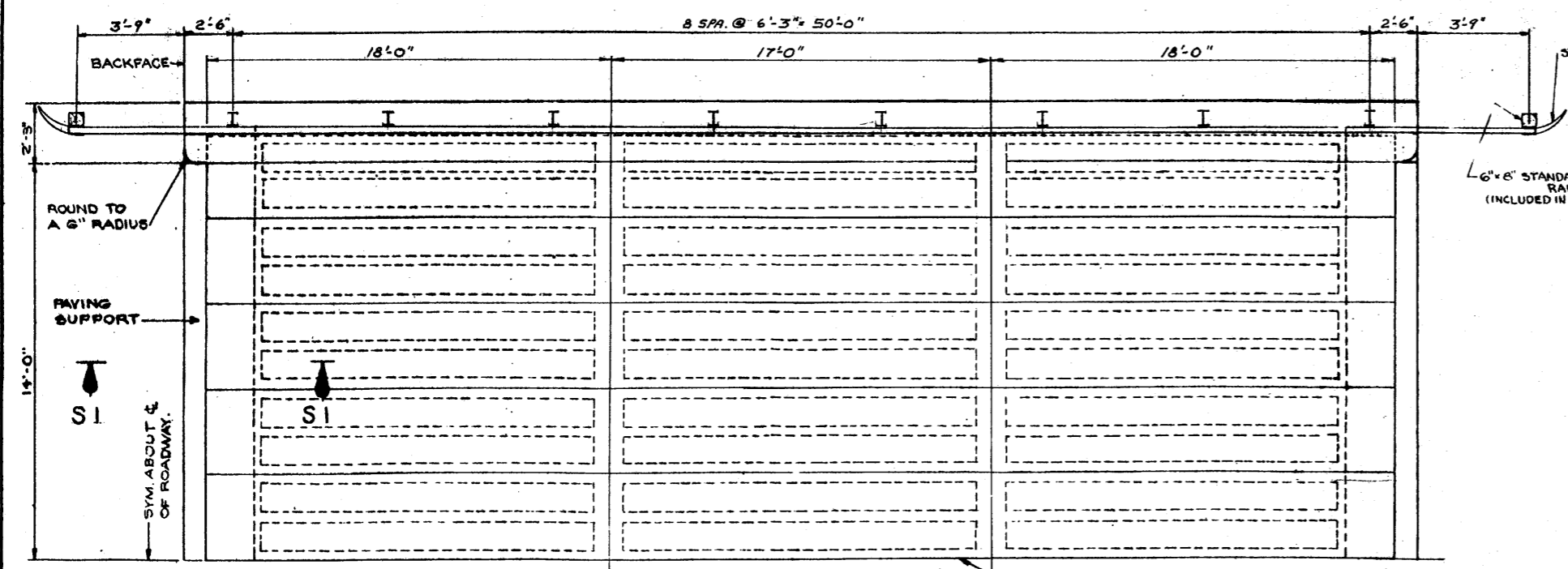
PLAN OF GIRDER
 THEORETICAL PRESTRESSED CAMBER 2/18



8" THREADED INSERTS TO SUPPORT TIMBERS FOR CURB FORMS - FOR SPACING SEE "PLAN OF GIRDER"

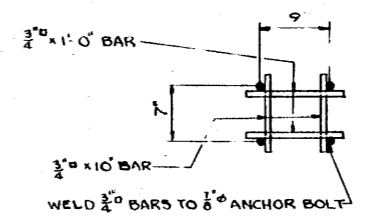


RAIL POST DETAIL

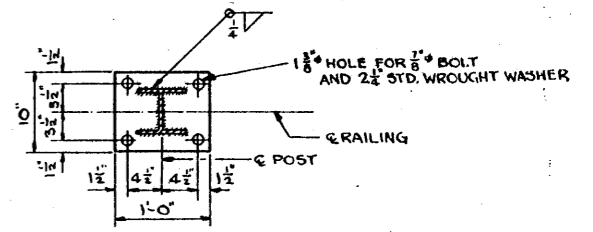


HALF PLAN

6" x 6" STANDARD GUARD RAIL POST (INCLUDED IN BID ITEM "STEEL RAILING")



POST ANCHOR DETAIL

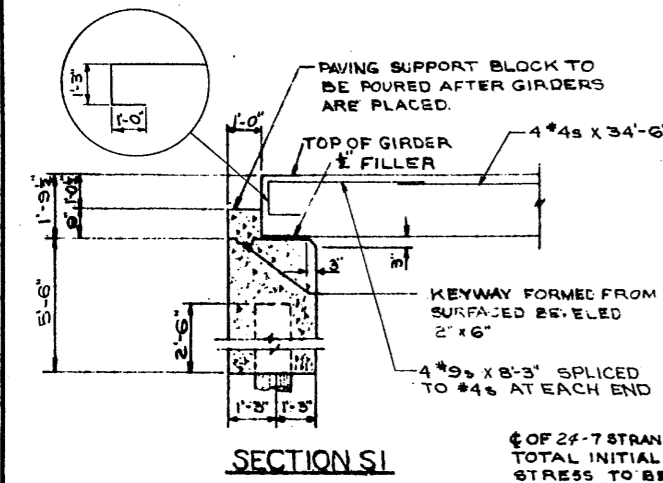


POST BASE PLATE

BILL OF BARS

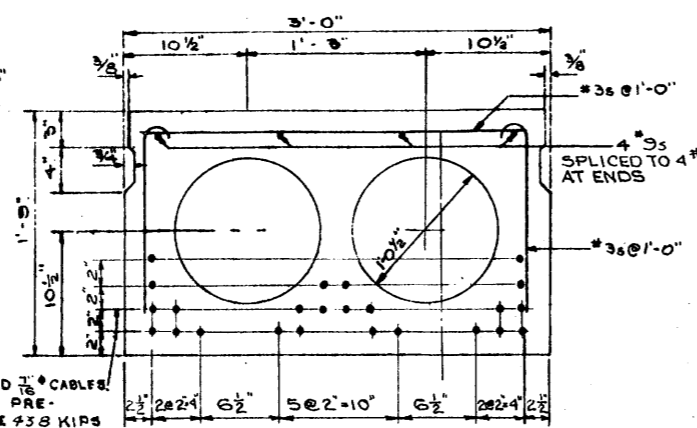
DIMENSIONS IN BENDING DETAILS ARE OUT TO OUT. 300 #

POUR MARK	NO.	SIZE	LENGTH	SPACING	LOCATION	DET.
B 1	88	4	2'-6"	1'-3"	CURB TRANS.	A
B 2	8	4	28'-0"	SHOWN	" LONG.	

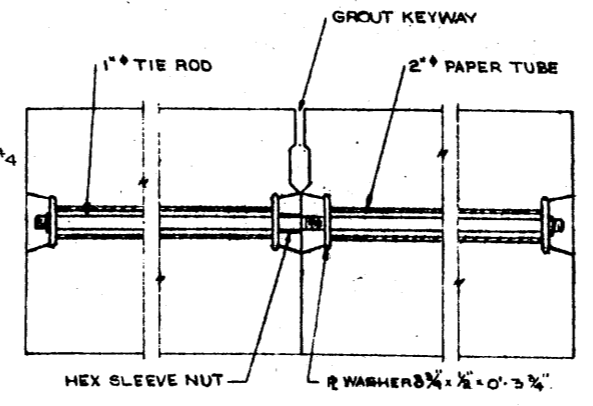


SECTION S1

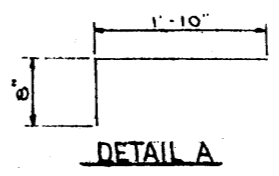
C OF 27-7 STRAND 7/8" CABLES
 TOTAL INITIAL PRE-STRESS TO BE 438 KIPS FOR EACH GIRDER.



TYPICAL GIRDER CROSS SECTION

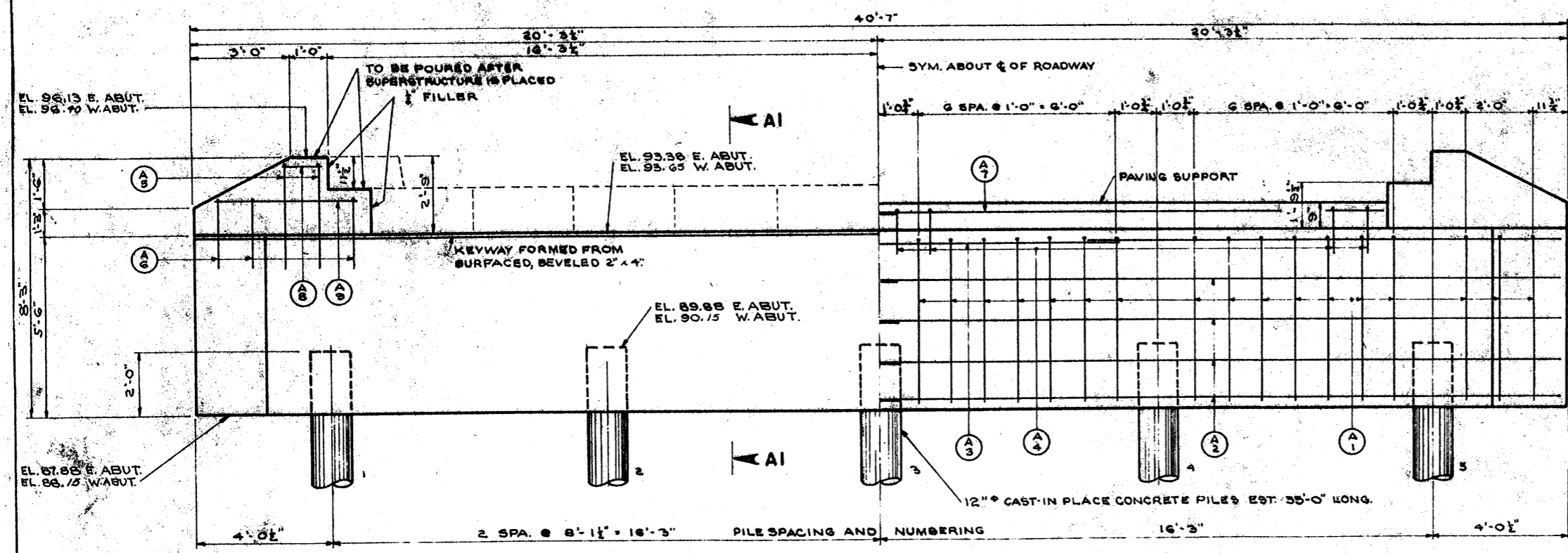


DECK CONNECTION DETAIL

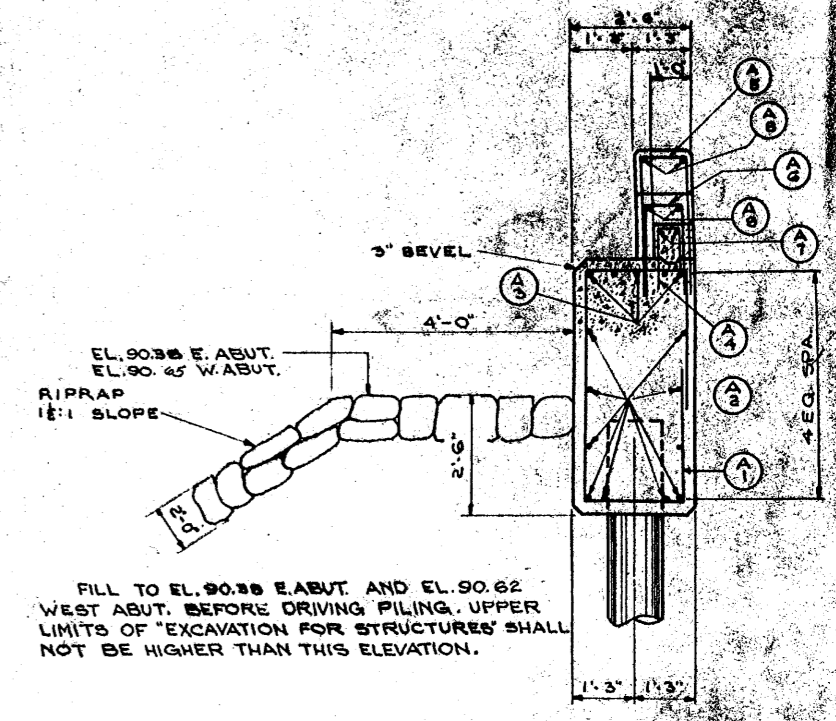


DETAIL A

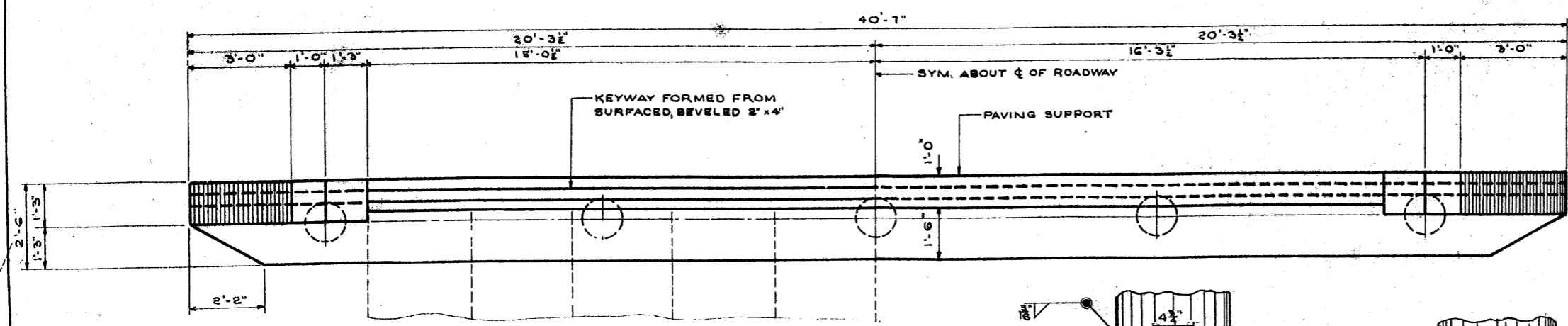
REVISION	STATE HIGHWAY COMMISSION OF WISCONSIN		
	SUPERSTRUCTURE		
	DESIGN SPEC. A.A.S.H.O.'57	LOADING H 18	DATE 1-1957
	DATE 4-22-55	DESIGN J.E.	DRAWN A.W.B. CHG. 11.6.6
STRUCTURE	B-43-5	SHEET	2 OF 3



FRONT ELEVATION



SECTION A1

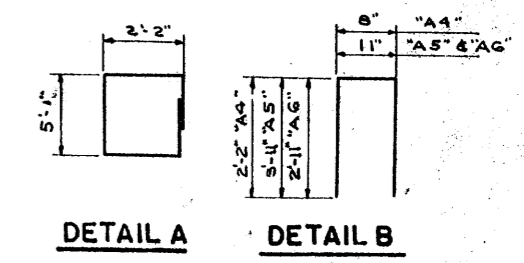


PLAN

BILL OF BARS 2,210*

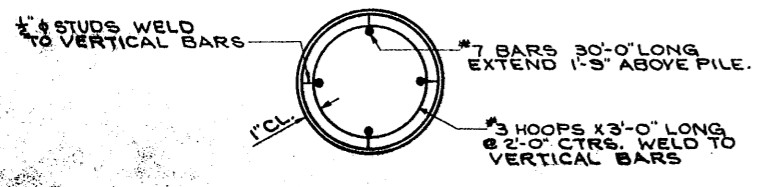
DIMENSIONS IN BENDING DETAILS ARE OUT TO OUT

POUR	MARK NO.	SIZE	LENGTH	SPACING	LOCATION	DE	
BODY	A 1	68	4	15-6	SHOWN	BODY STIRRUPS	A
	A 2	40	4	20-9	"	"	HORIZ.
	A 3	30	4	14-3	"	"	TOP
	A 4	60	6	3-0	1-0	"	& PAVING SUPPORT VERT.
	A 5	8	4	8-9	1-0	"	& WINGS VERT.
	A 6	12	4	6-9	1-0	"	"
WINGS & PAV. SUPPORT	A 7	8	4	15-9	1-0	PAVING SUPPORT HORIZ.	
	A 8	8	4	1-3	SHOWN	WINGS HORIZ.	
	A 9	8	4	4-3	"	"	

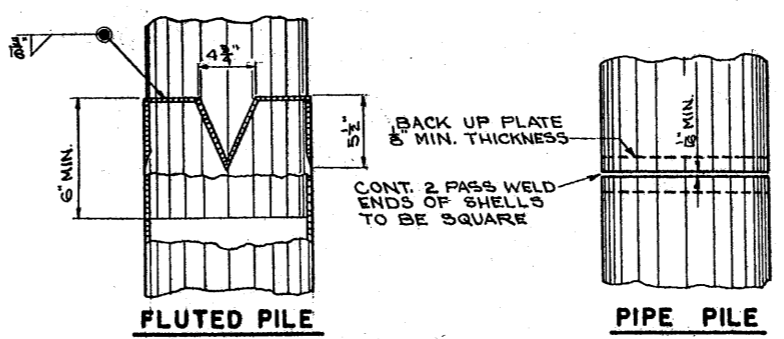


DETAIL A

DETAIL B



SECTION THRU PILES



PILE SPLICE DETAIL

REVISED	STATE HIGHWAY COMMISSION OF WISCONSIN
	ABUTMENTS
	DESIGN SPEC. A. S. H. 57 LOADING H18 SPEC. 1087
	DATE 4-22-59 DESIGN J. B. DRAWN BY C. H. 4-2-59
STRUCTURE	B-43-5 SHEET 3 OF 3