

ONEIDA Co.  
Tn. ENTERPRISE

A

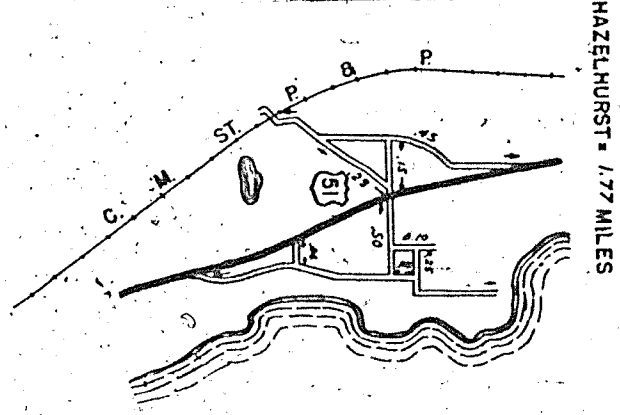
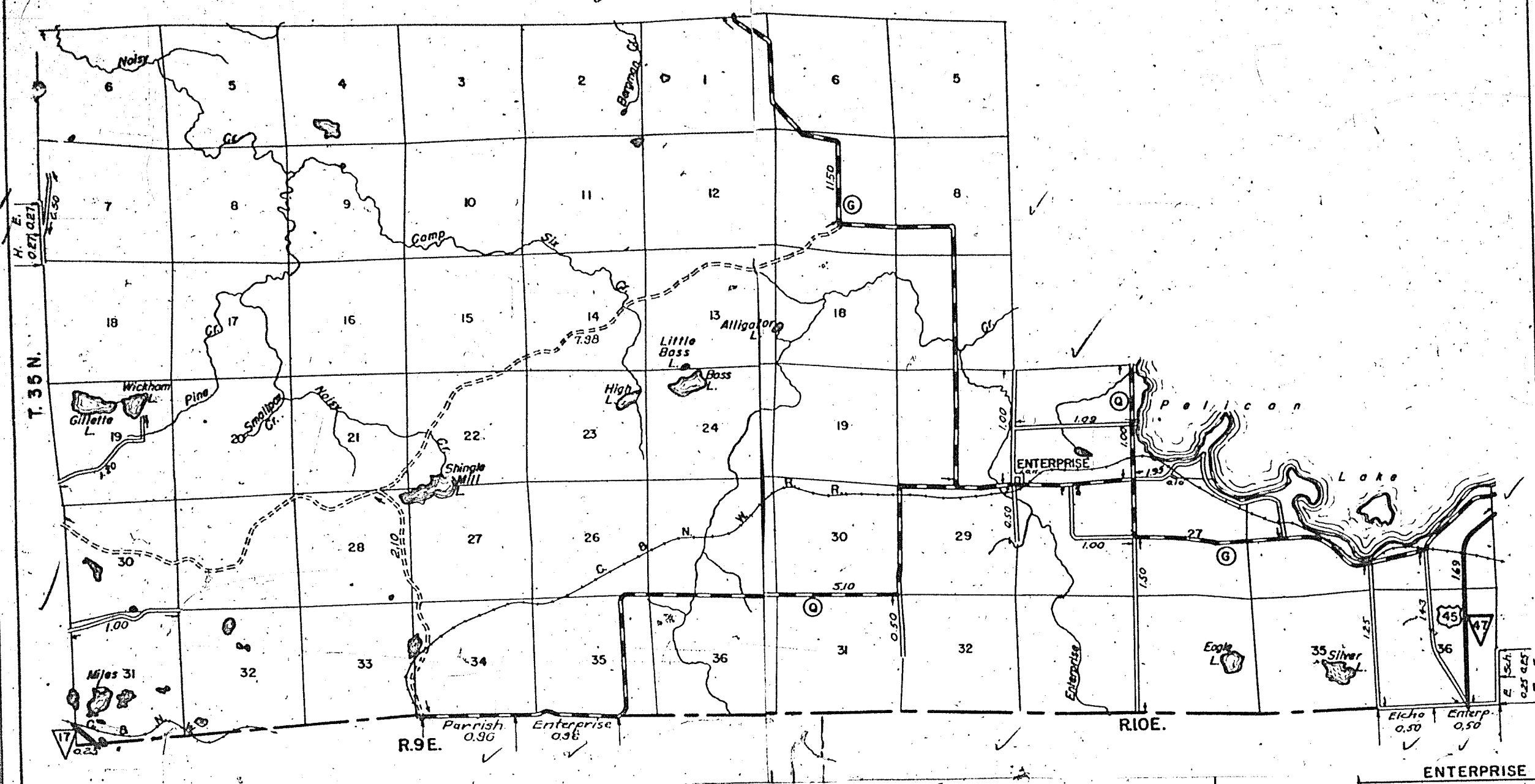
STATE HIGHWAY COMM. OF WISCONSIN  
TOWN PLAT RECORD

3-19  
1945

B

Town	ENTERPRISE					County			ONEIDA	Sym- bols
	Fed. For. Last Corr.	State Trunks	State Fire Lane	State Trunks	County Trunks	Local Roads	Local Roads	Local Roads		
10-22-42		12.08	1.92	18.56	19.75				Sch. 5	
10-22-43		10.08	1.92	18.56	15.25				Cem. 11	
11-3-44		10.08	1.92	18.56	18.75				Tower 10	
11-3-45									Gate 11	

Certified as Correct By Town Chairman: *Erwin Gulik*



ONEIDA Co.  
Tn. LITTLE RICE

A

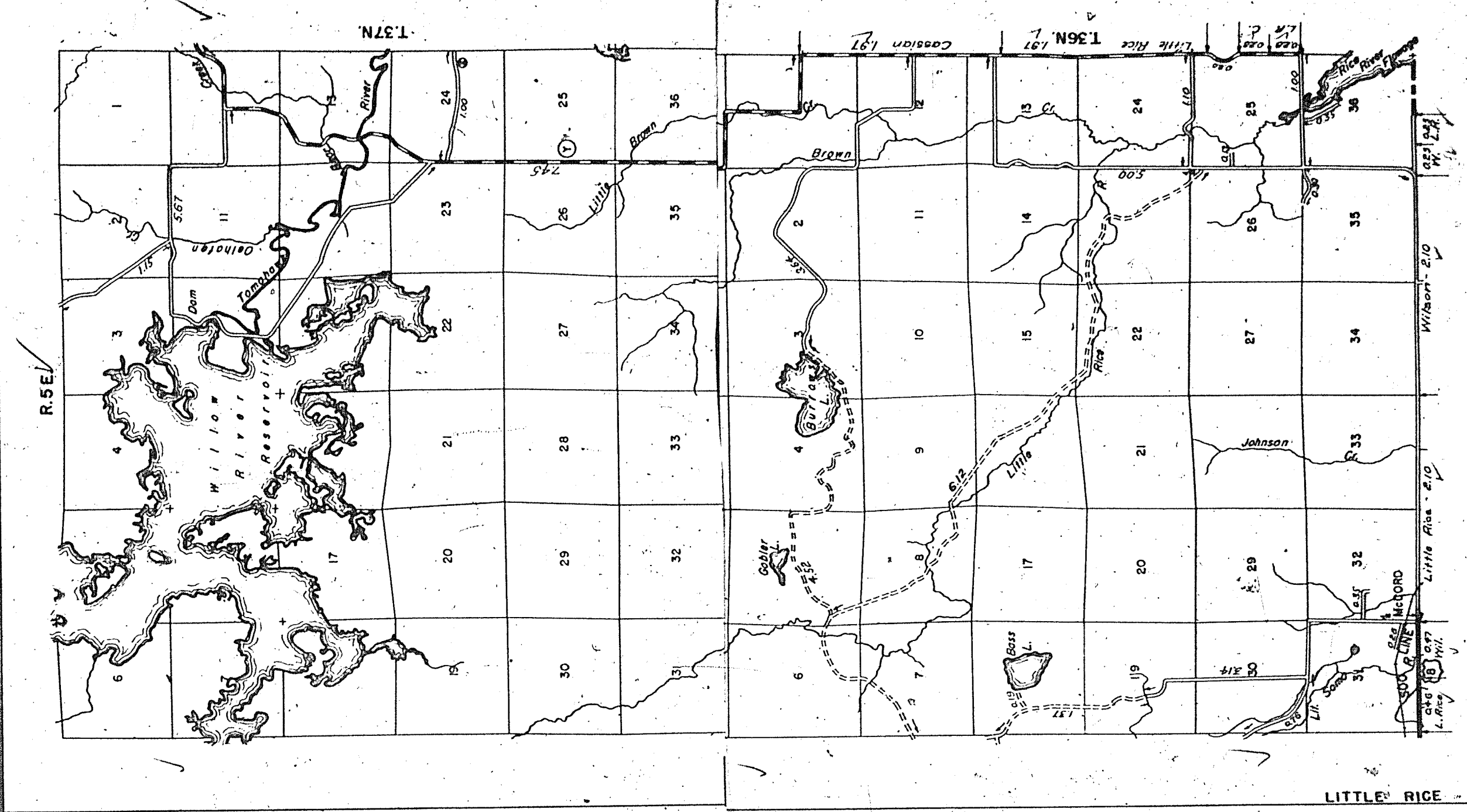
STATE HIGHWAY COMM. OF WISCONSIN  
TOWN PLAT RECORD

3-19  
1945

B

Town	LITTLE RICE					County			ONEIDA	Sym- bols
	Fed. For. Last Corr.	State Trunks	State Fire Lane	State Trunks	County Trunks	Local Roads	Local Roads	Local Roads		
10-24-42		12.20	0.46	9.90	26.22				Sch. 5	
10-24-43		12.20	0.46	9.90	26.22				Cem. 11	
11-3-44		12.20	0.46	9.90	26.22				Tower 10	
11-3-45									Gate 11	

Certified as Correct By Town Chairman: *J.D. Clements*



STATE HIGHWAY COMMISSION OF WISCONSIN  
TOWN PLAT RECORD

3-19  
1945

Town	HAZELHURST					County			ONEIDA	Sym- bols
	Fed. For. Last Corr.	State Trunks	State Fire Lane	State Trunks	County Trunks	Local Roads	Local Roads	Local Roads		
1-9-42		6.41	7.02	32.69						
1-7-43		6.41	7.02	32.69						
1-3-44		6.41	7.02	32.69						
1-3-45										

Certified as Correct:  
*J.D. Clements*  
Town Chairman

