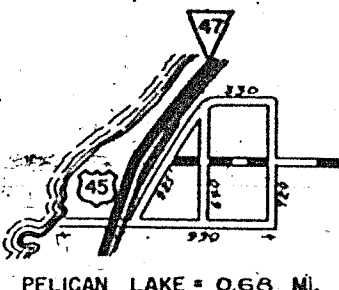
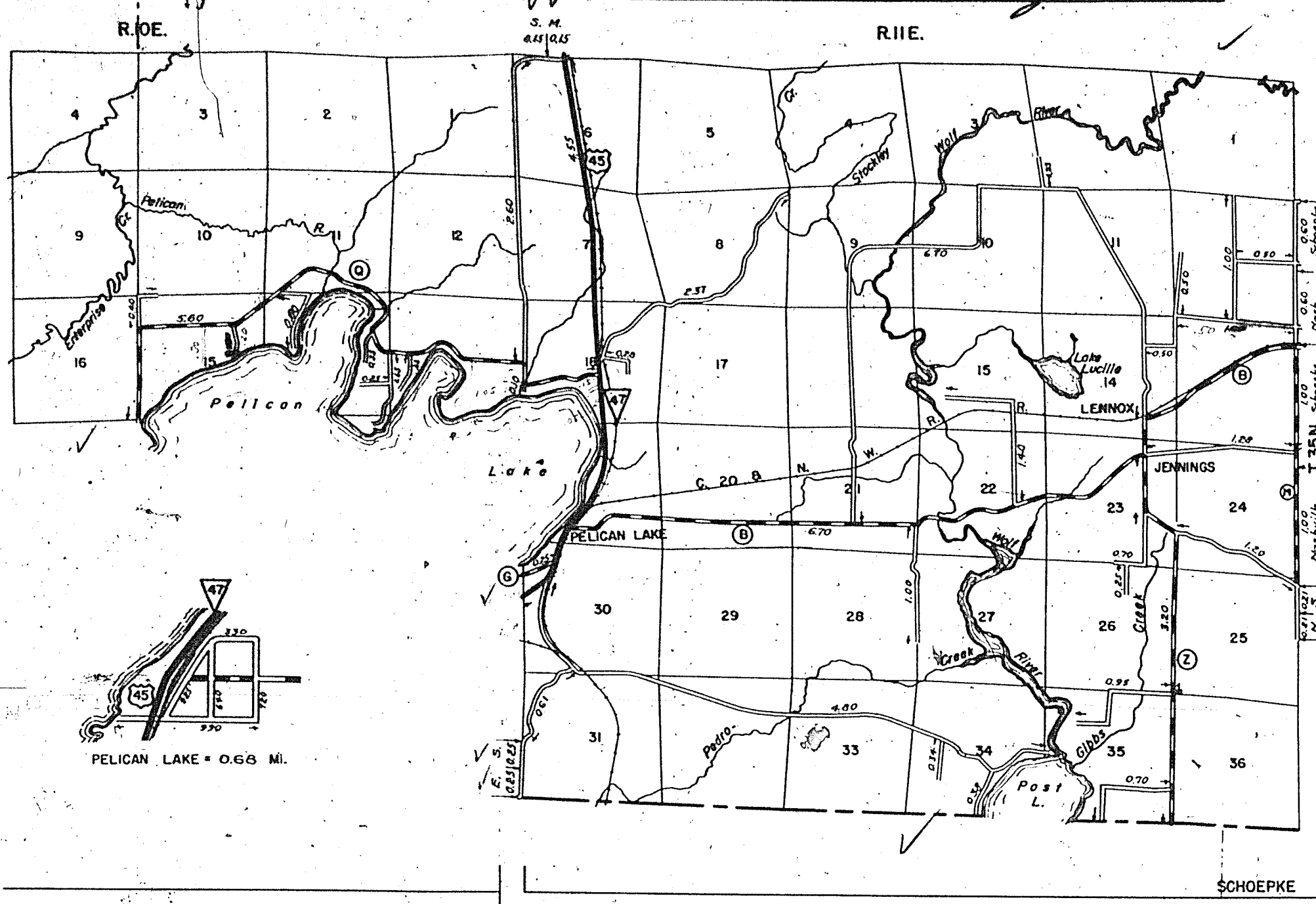


STATE HIGHWAY COMM. OF WISCONSIN
TOWN PLAT RECORD

13-19
1945

Town	SCHOEPKE				ONEIDA				Sym- bols
	Fed. For. Dax Rds.	State Park Rds.	State Fire Lane	State Trunks	County Trunks	Local Roads			
10-22-42				4.57	16.75	39.11	Sch. 1		
10-22-43				4.55	16.75	39.25	Com. 11		
11-2-44				4.55	16.75	39.10	Tower 10		
11-27-45						37.95	Gate 11		

Certified as Correct By Town Chairman: *Ed. Gander*



PELICAN LAKE = 0.68 MI.

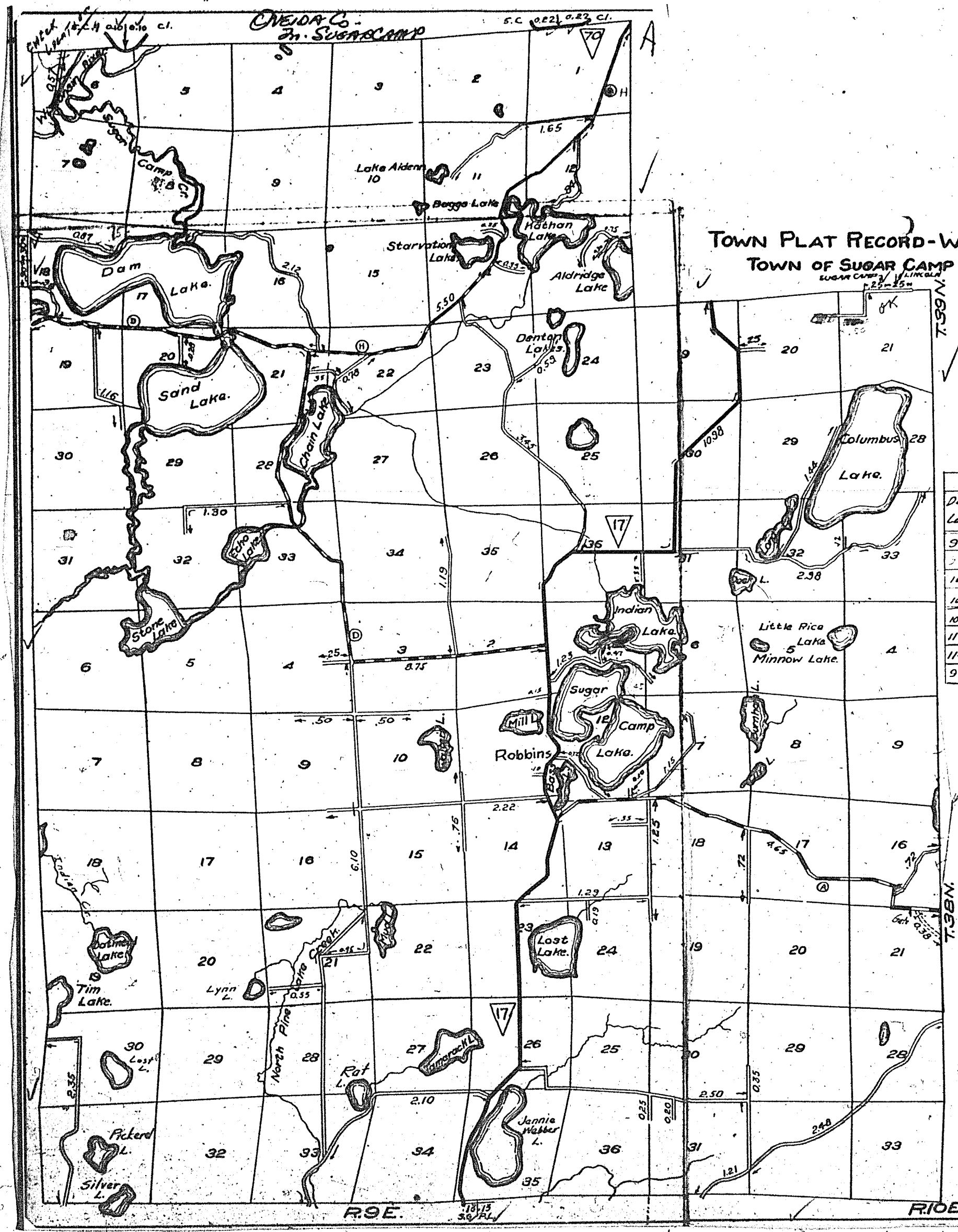
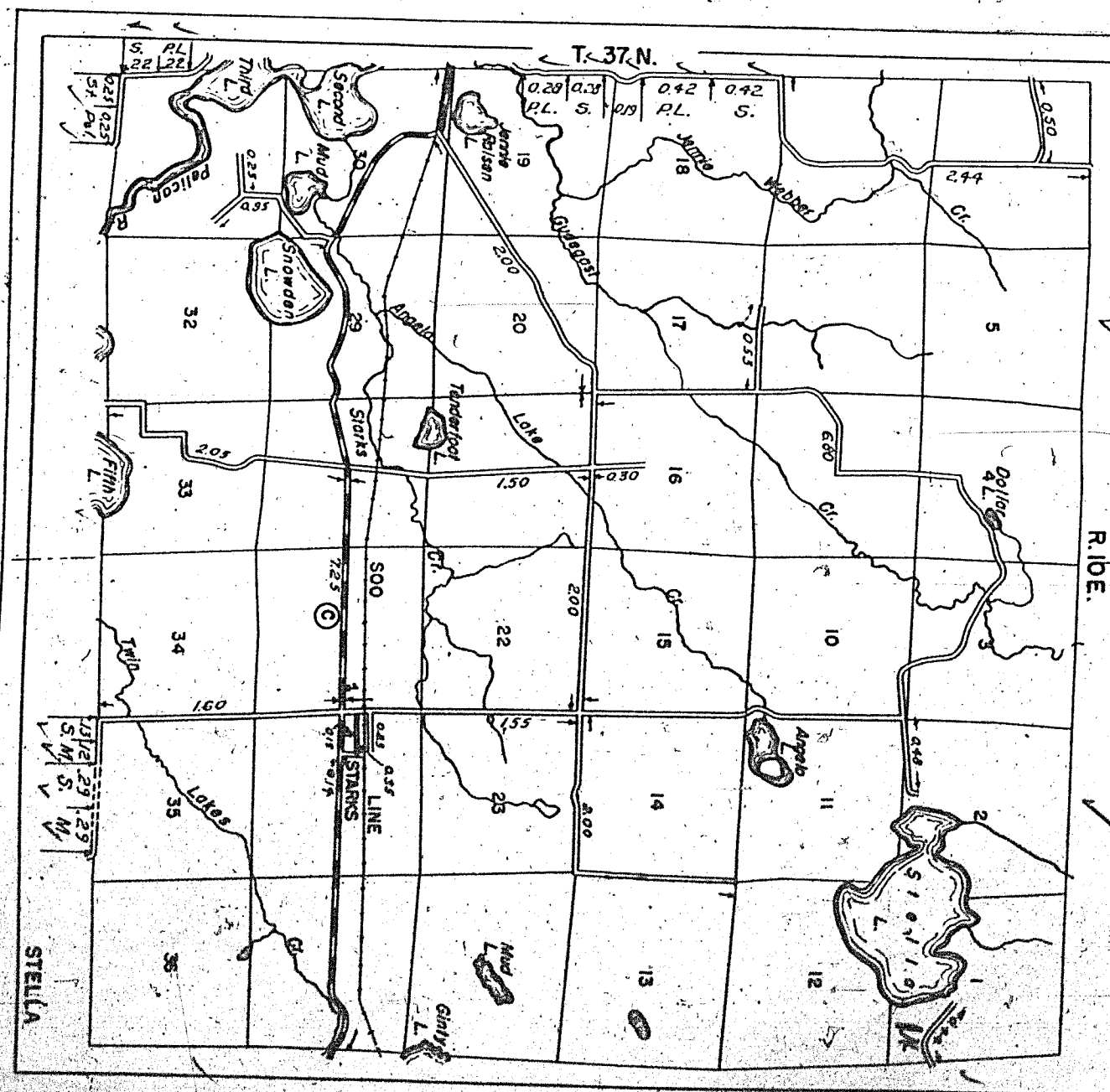


TABLE OF MILEAGES.

Date of Last Cor.	Fed. For. Dax Rds.	State Park Rds.	State Fire Lane	State Trunks	County Trunks	Local Roads
9-29-41			0.58	11.20	18.90	53.65
10-2-42						55.00
11-2-43	8.11	3.60	11.10	4.80	55.18	
10-15-44	0	2.6	11.10	12.51	54.85	
10-16-40	0	3.60	11.10	13.40	54.85	
11-3-41			3.60	11.42	13.90	57.20
11-3-42			2.86	11.20	18.90	53.38
9-2-43			0.38	11.20	18.90	53.55

- LEGEND
- STATE TRUNK HIGHWAY SYSTEM
 - COUNTY TRUNK HIGHWAY SYSTEM
 - TOWN ROADS
 - St. Park Rds.
 - Forest
 - Fire Lanes

CERTIFIED AS CORRECT: *Geo. J. Pelt*
TOWN CHAIRMAN.



STATE HIGHWAY COMM. OF WISCONSIN
TOWN PLAT RECORD

Town	STELLA				ONEIDA				Sym- bols
	Fed. For. Dax Rds.	State Park Rds.	State Fire Lane	State Trunks	County Trunks	Local Roads			
10-23-42				2.76	7.55	27.27	Sch. 1		
11-2-44				0.29	7.55	27.77	Com. 11		
11-2-45				0.29	7.55	27.77	Tower 10		
							Gate 11		

Certified as Correct By Town Chairman: *Frank Hoffstad*

14-19
1945