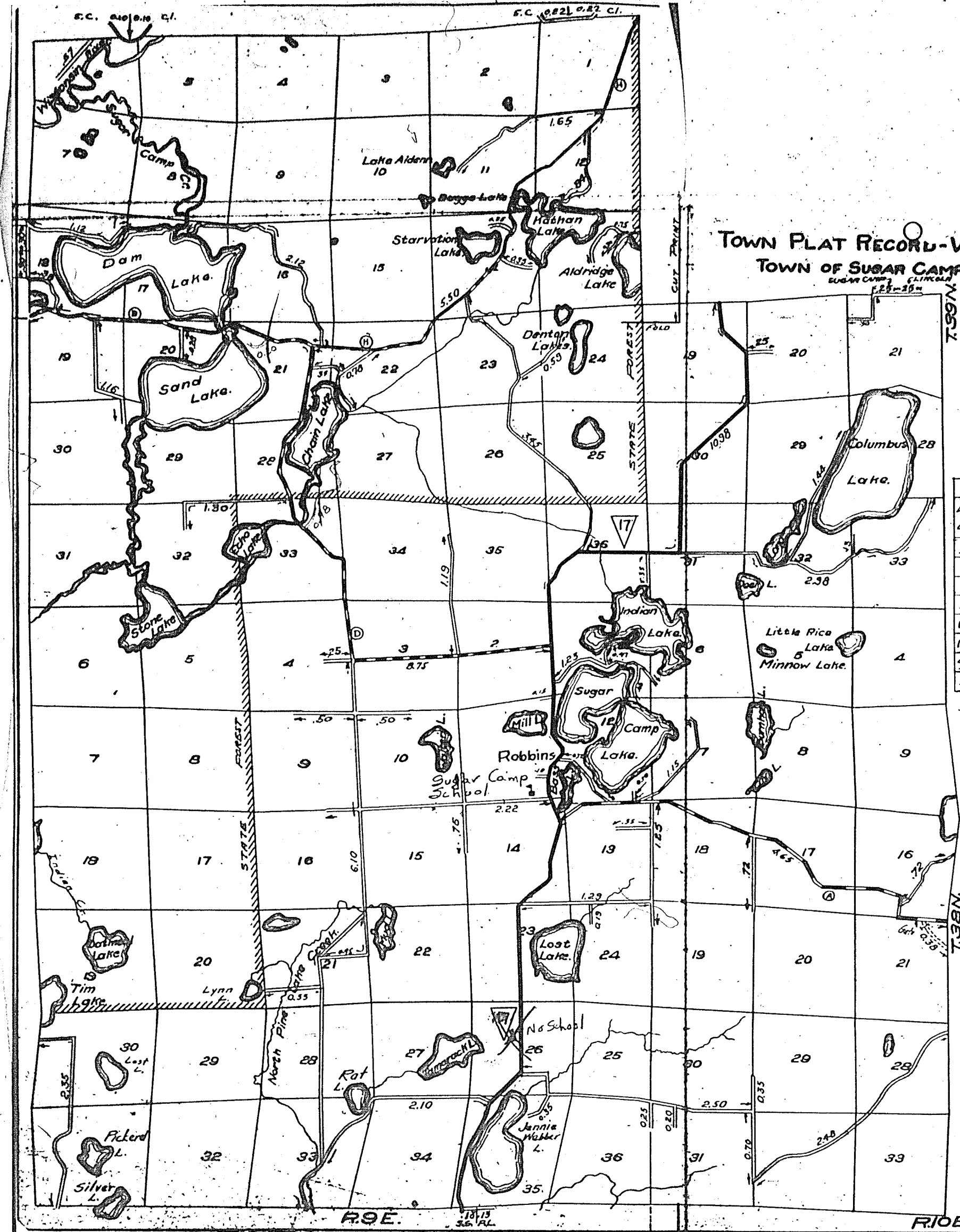
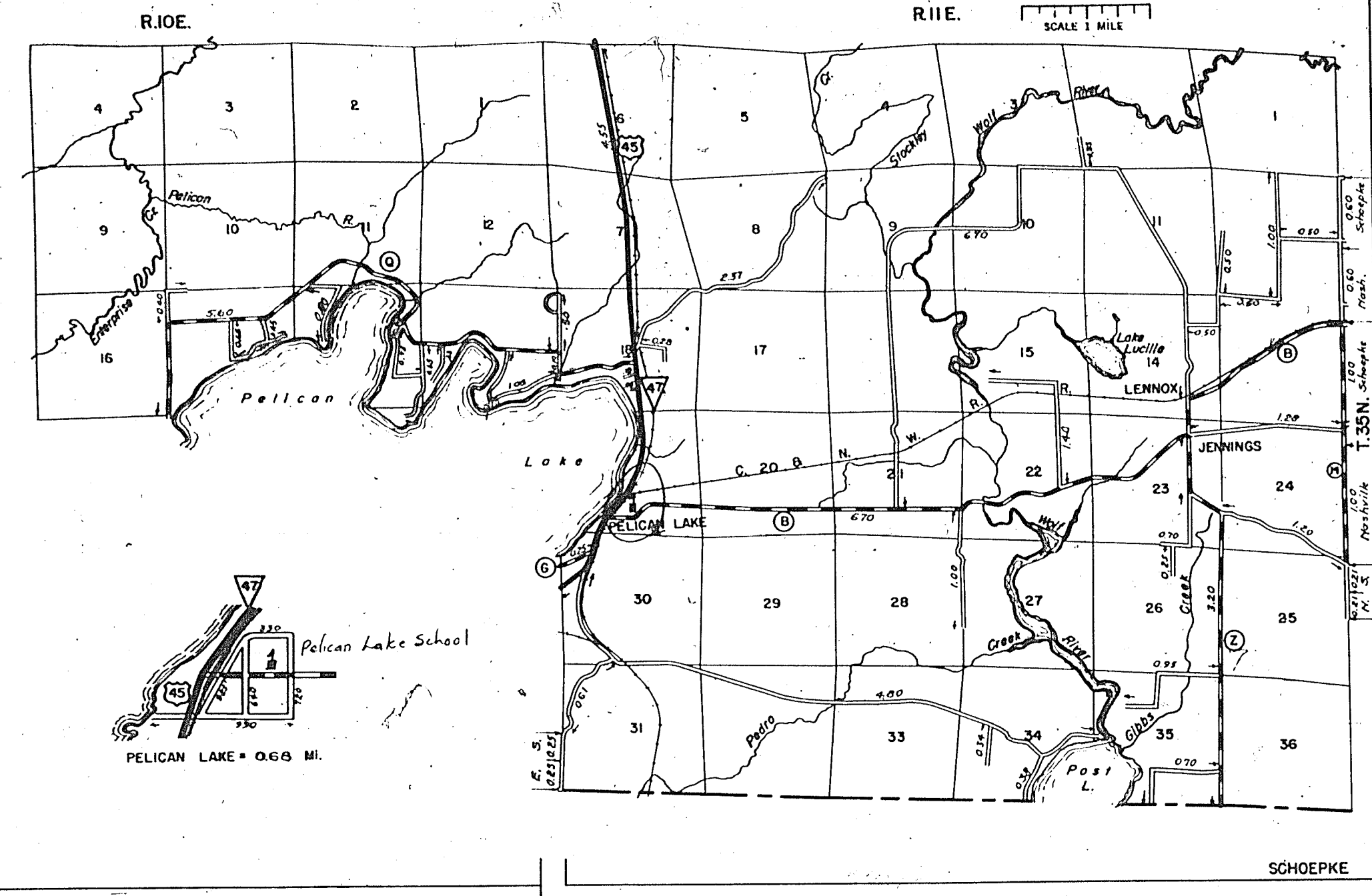


15-20
1930

STATE HIGHWAY COMM. OF WISCONSIN
TOWN PLAT RECORD

Town	SCHOEPEKE				ONEIDA				Sym-bols
	Fed. For. Dev. Rds.	State Park Rds.	State Fire Lane	State Trunks	County Trunks	Local Roads			
Date of Last Corr.				4.55	16.75	33.00	Sch. 1		
9-29-48				4.55	16.75	33.00	Cam. 1		
10-7-49				4.55	16.75	33.00	Tower 1		
9-21-50				4.55	16.75	33.00	Gate -3-		
10-27-45				4.55	16.75	33.00			
10-18-46				4.55	16.75	33.00			
10-4-47				4.55	16.75	33.00			

Certified as Correct By Town Chairman: *Ed. Gaudin*



TOWN PLAT RECORD - WISCONSIN HIGHWAY COMMISSION
TOWN OF SUGAR CAMP
COUNTY OF ONEIDA

Sugar Camp Oneida
17-20
1930

TABLE OF MILEAGES

Date of Last Corr.	Fed. For. Dev. Rds.	State Park Rds.	Fire Lane	State Trunks	County Trunks	Local Roads
9-29-48			0.30	11.80	18.90	58.65
9-27-45			0.30	11.20	18.90	56.00
9-23-46			0.30	11.20	18.90	56.00
9-5-47			0.30	11.20	18.90	56.36
10-25-48			0.30	11.20	18.90	56.36
10-4-49			0.30	10.90	18.90	56.00
9-11-50			0.30	10.90	18.90	57.15
9-2-43			0.30	11.20	18.90	53.55

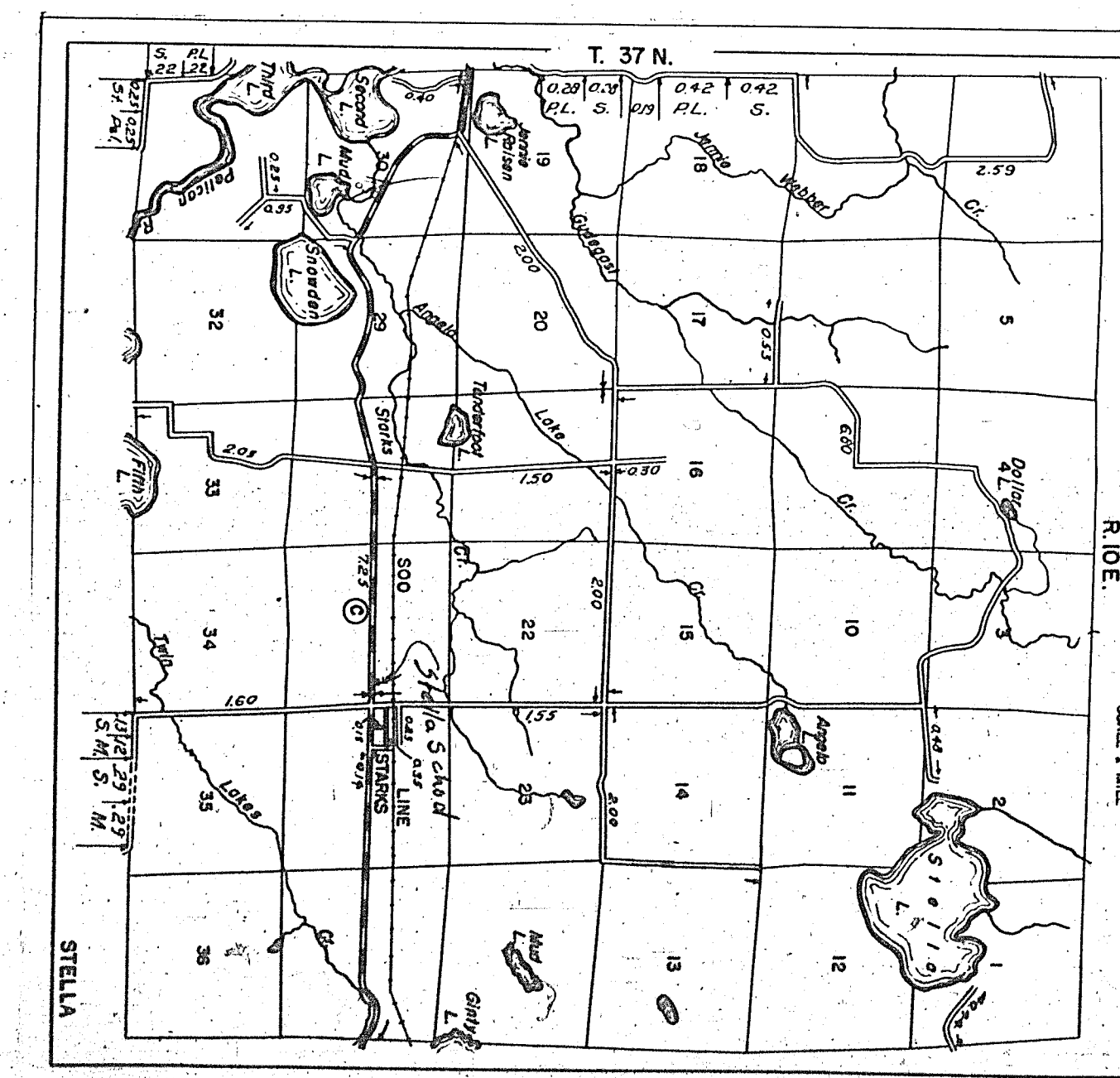
- LEGEND
- STATE TRUNK HIGHWAY SYSTEM
 - COUNTY TRUNK HIGHWAY SYSTEM
 - TOWN ROADS SYSTEM
 - St. Park Rds.
 - Fire Lane

Certified as Correct *Joe J. Peltz*
TOWN CHAIRMAN
SUGAR CAMP

STATE HIGHWAY COMM. OF WISCONSIN
TOWN PLAT RECORD

Town	STELLA				ONEIDA				Sym-bols
	Fed. For. Dev. Rds.	State Park Rds.	State Fire Lane	State Trunks	County Trunks	Local Roads			
Date of Last Corr.				0.29	7.25	27.77	Sch. 1		
10-14-49				0.29	7.25	27.77	Cam. 1		
9-21-50				0.29	7.25	27.77	Tower 1		
10-11-45				0.29	7.25	27.77	Gate -3-		
10-18-46				0.29	7.25	27.77			
9-6-47				0.29	7.25	27.77			

Certified as Correct By Town Chairman: *Robert Hoffland*



16-20
1930