

STATE HIGHWAY COMM. OF WISCONSIN  
TOWN PLAT RECORD

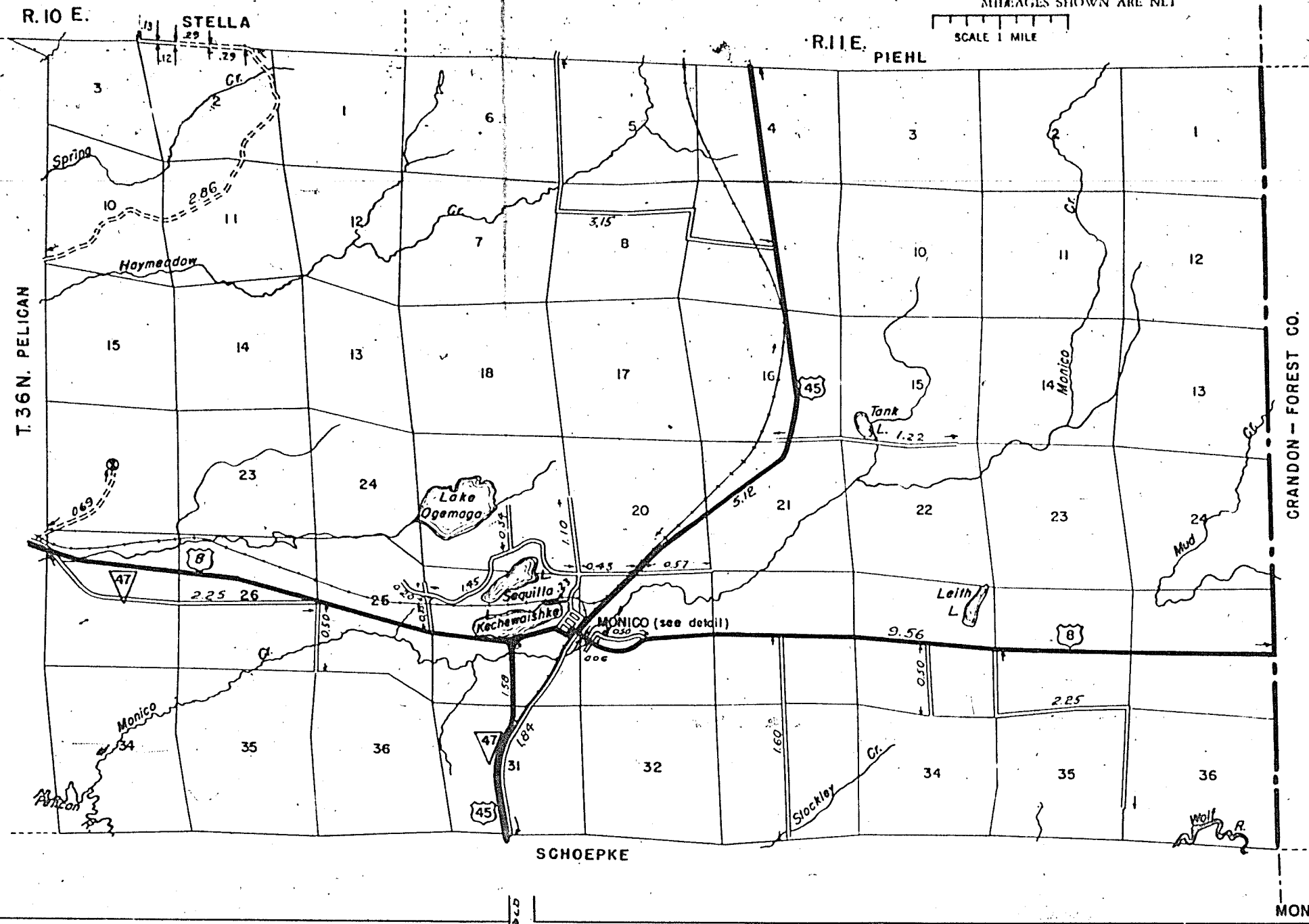
Date of Last Corr.	Town MONICO				County ONEIDA				Local Roads	Sym-bols
	Fed. For. Dev. Rds.	State Park Rds.	State Fire Lane	State Trunks	County Trunks	Local Roads	Local Roads			
12-15-54			3.84	16.26			19.09		Sch. &	
10-7-49			3.84	16.30			21.16		Cem. [ ]	
9-21-50			3.84	16.30			19.23		Tower [ ]	
10-29-51			3.84	16.30			19.23		Gate [ ]	
12-3-52			3.84	16.26			19.23			
9-23-53			3.84	16.26			19.09			

Certified as Correct By Town Chairman *Jeffrey Flannery*

Supervisor *Jeffrey Flannery*

MILEAGES SHOWN ARE NET

SCALE 1 MILE



STATE HIGHWAY COMM. OF WISCONSIN  
TOWN PLAT RECORD

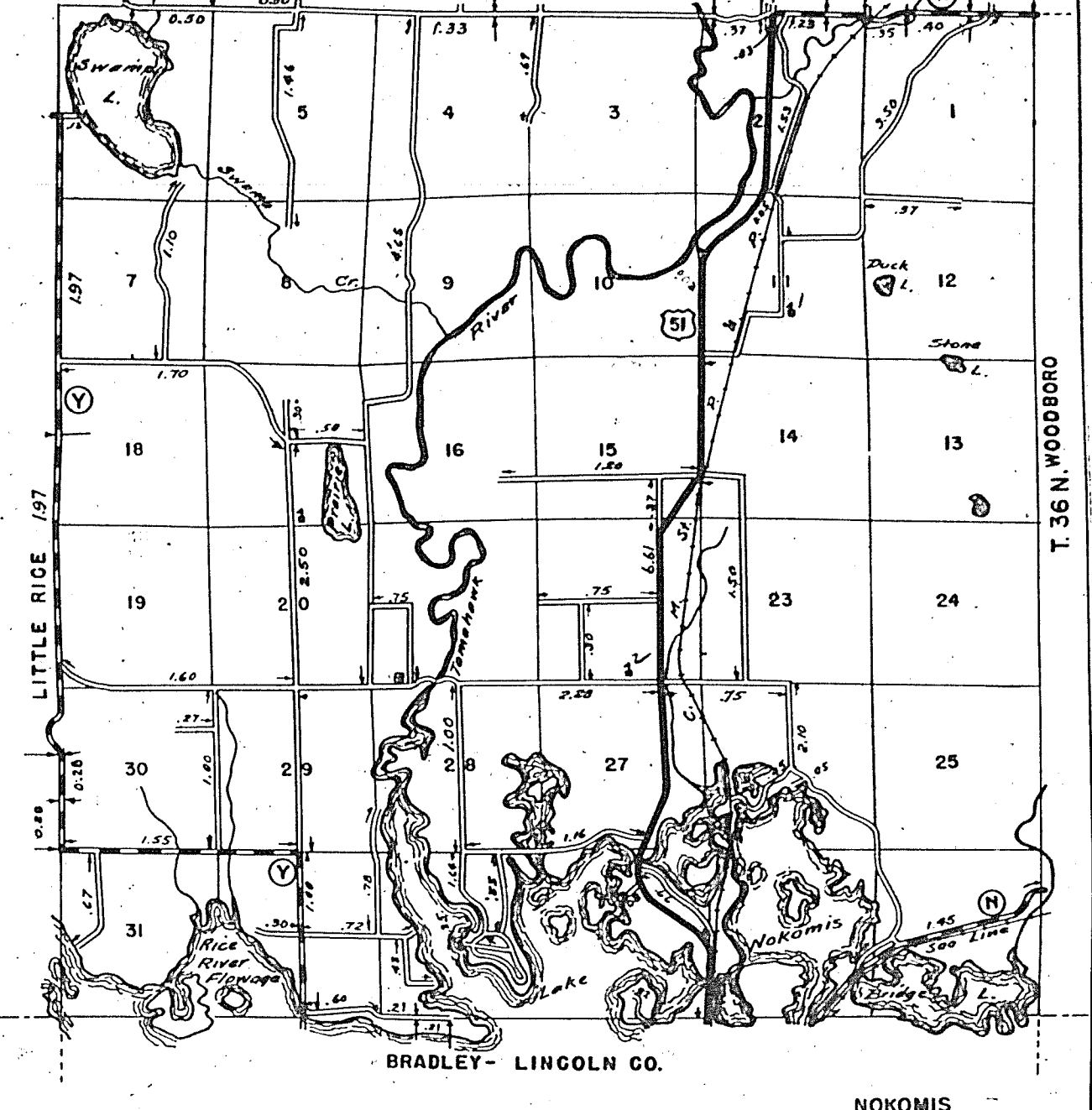
Date of Last Corr.	Town NOKOMIS				County ONEIDA				Local Roads	Sym-bols
	Fed. For. Dev. Rds.	State Park Rds.	State Fire Lane	State Trunks	County Trunks	Local Roads	Local Roads			
12-20-54			6.61	7.23			43.77		Sch. &	
11-9-49			6.71	7.23			42.85		Cem. [ ]	
10-10-50			6.71	7.23			42.85		Tower [ ]	
10-18-51			6.71	7.23			42.95		Gate [ ]	
11-15-52			6.61	7.23			43.20			
9-24-53			6.61	7.23			43.75			

Certified as Correct By Town Chairman *Robert Spitzer*

Supervisor *Robert Spitzer*

MILEAGES SHOWN ARE NET

SCALE 1 MILE



STATE HIGHWAY COMMISSION OF WISCONSIN  
TOWN PLAT RECORD

Date of Last Corr.	Town of NEWBOLD				County of ONEIDA				Local Roads	Sym-bols
	Fed. For. Dev. Rds.	State Park Rds.	State Fire Lane	State Trunks	County Trunks	Local Roads	Local Roads			
10-19-51			11.10	14.56			85.59			
12-8-52			11.10	14.56			83.68			
9-25-53			11.10	16.98			86.15			
12-14-54			11.10	16.78			85.35			
10-7-46			13.11	12.43			81.89			
9-17-47			13.23	12.43			82.38			
11-24-48			11.10	14.56			81.68			
11-15-49			11.10	14.56			85.08			
10-31-50			11.10	14.56			85.08			

—LEGEND—

- State Trunk Highway Sys [ ]
- County Trunk Highway Sys [ ]
- Local Roads [ ]
- Fed. Forest Dev. Roads [ ]
- State Park Roads [ ]
- State Fire Lanes [ ]

Certified as Correct

*Earl E. Johnson*  
Town Chairman

MILEAGES SHOWN ARE NET

SCALE 1 MILE

