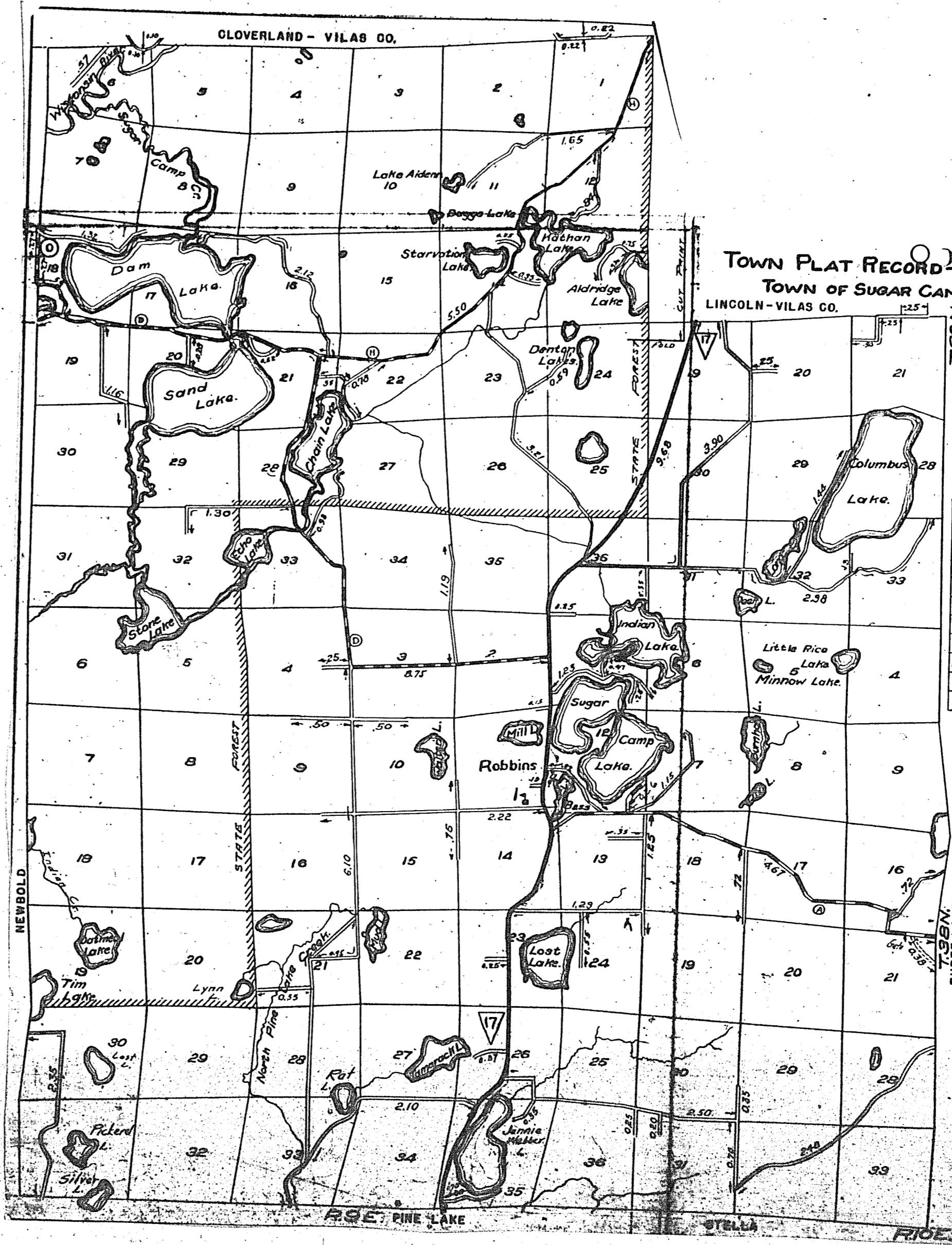
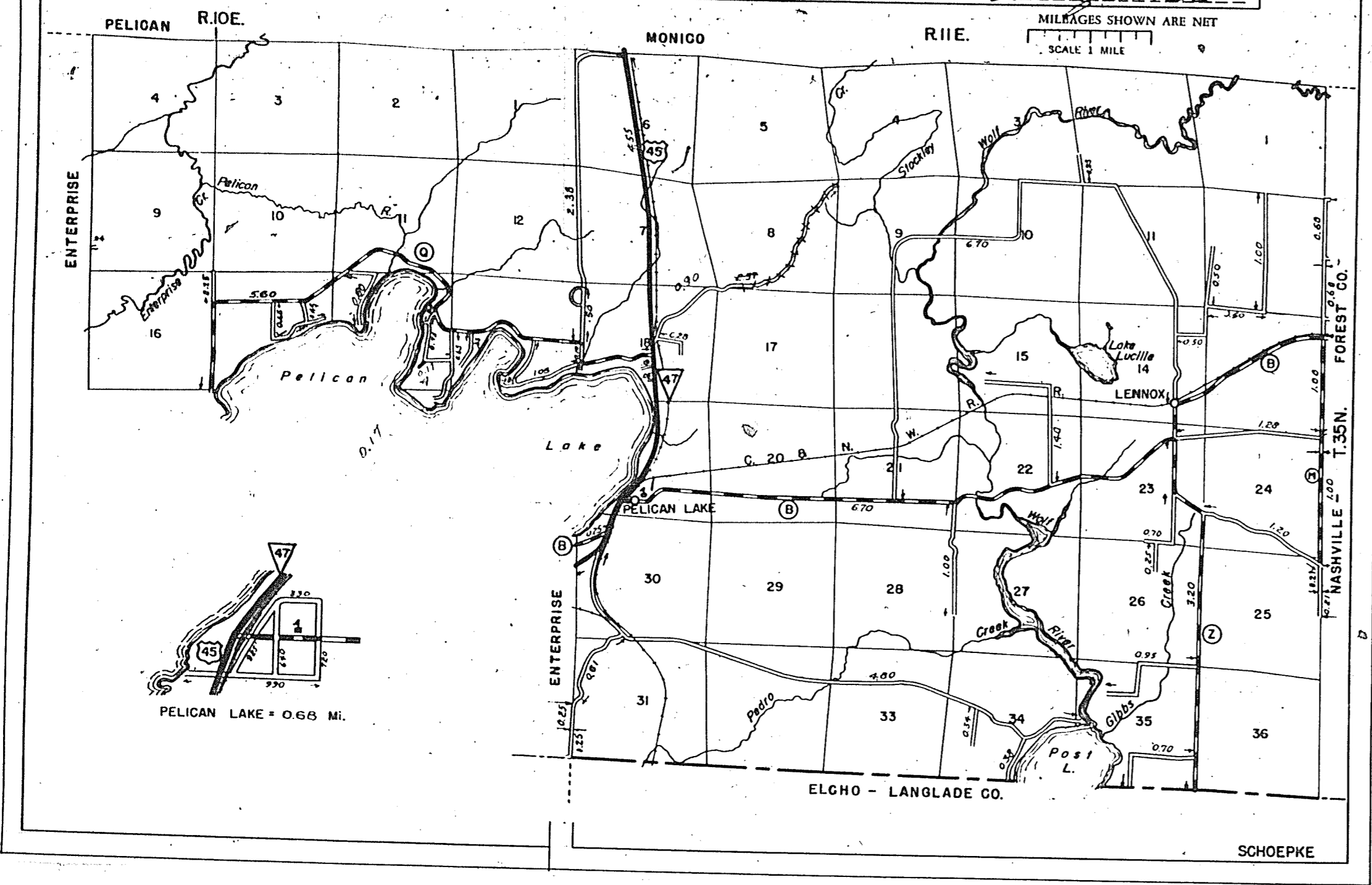


Madison 1954  
15-20  
STATE HIGHWAY COMM. OF WISCONSIN  
TOWN PLAT RECORD

Town	SCHOEPKE				County ONEIDA			
	Fed For. Dev. Rds.	State Park Rds.	State Fire Lanes	State Trunks	County Trunks	Local Roads	Sym-bols	
12-15-54				4.55	16.75	34.47	Sch. &	
10-7-49				4.55	16.75	38.90	Cem. II	
9-21-50				4.55	16.75	34.00	Tower O	
9-20-57				4.55	16.75	34.00	Gate -3-	
10-3-52				4.55	16.75	36.42		
9-23-53				4.55	16.75	35.77		

Certified as Correct By Town Chairman: *Ed. Darden*



Sugar Camp Oneida  
Madison 1954 17-20  
TOWN PLAT RECORD - WISCONSIN HIGHWAY COMMISSION  
TOWN OF SUGAR CAMP  
COUNTY OF ONEIDA.  
LINCOLN-VILAS CO.

TABLE OF MILEAGES

Date of Last Cor.	Fed. Rds.	St. Park Rds.	Fire Lanes	State Trunks	County Trunks	Local Roads
12-5-52			0.38	9.68	18.92	62.54
9-29-53			0.38	9.68	19.74	62.18
12-14-54			0.38	9.68	19.74	62.67
9-5-47			0.38	11.20	18.90	56.36
10-25-48			0.38	11.20	18.90	56.36
10-4-49			0.38	10.98	18.90	58.07
9-22-50			0.38	10.98	18.90	57.35
11-13-51			0.38	10.98	18.90	58.61

MILEAGES SHOWN ARE NET

- LEGEND
- STATE TRUNK HIGHWAY SYSTEM
  - COUNTY TRUNK HIGHWAY SYSTEM
  - TOWN ROADS
  - St. Park Rds.
  - Fire Lanes

Certified as Correct By Town Chairman: *Ed. Darden*  
SUGAR CAMP

Madison 1954  
15-20  
STATE HIGHWAY COMM. OF WISCONSIN  
TOWN PLAT RECORD

Town	STELLA				County ONEIDA			
	Fed For. Dev. Rds.	State Park Rds.	State Fire Lanes	State Trunks	County Trunks	Local Roads	Sym-bols	
12-15-54				0.29	7.25	36.67	Sch. &	
10-4-49				0.29	7.25	27.82	Cem. II	
9-20-50				0.29	7.25	27.82	Tower O	
9-29-57				0.29	7.25	31.62	Gate -3-	
10-3-52				0.29	7.25	31.62		
9-23-53				0.29	7.25	32.67		

Certified as Correct By Town Chairman: *Ed. Darden*

