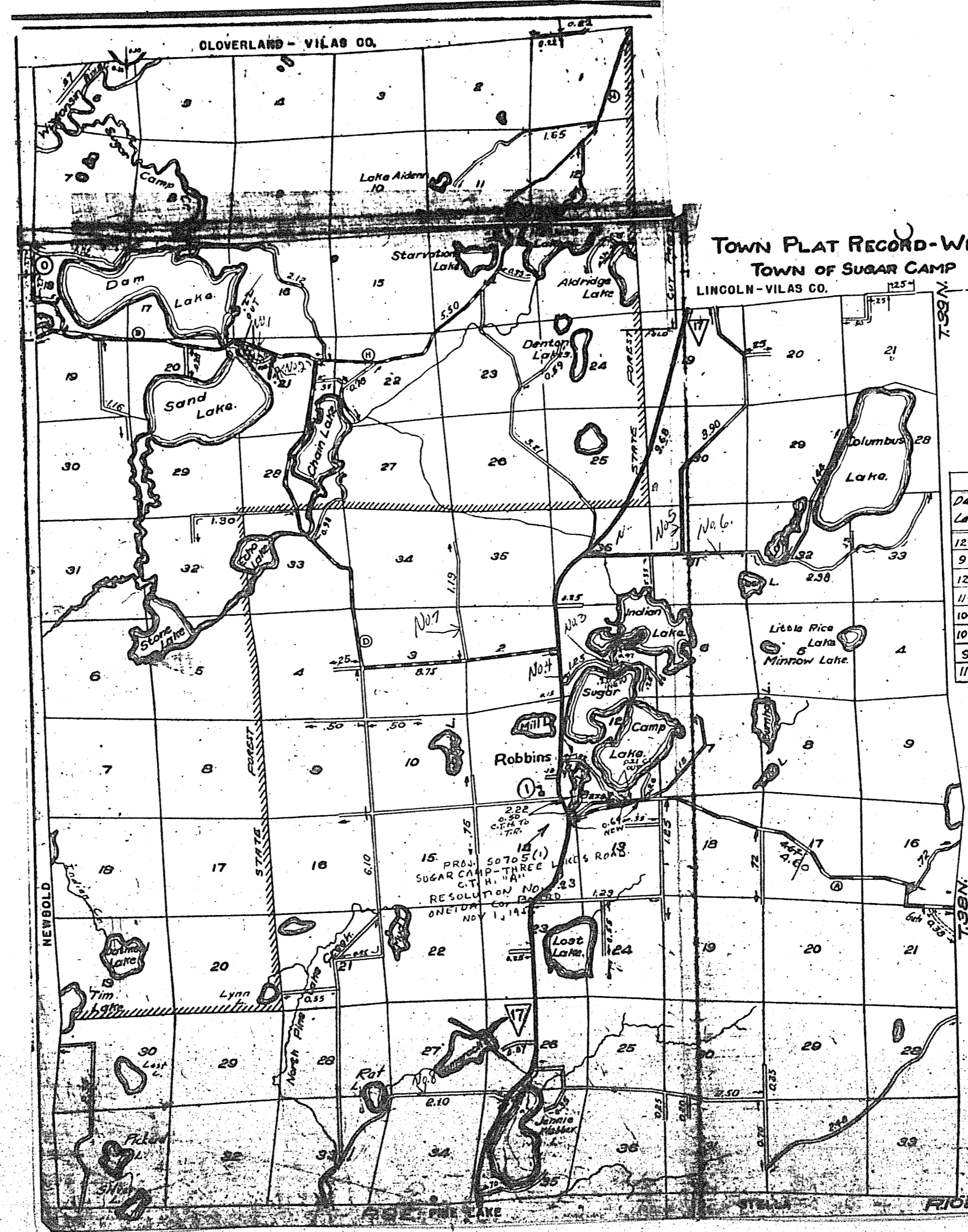
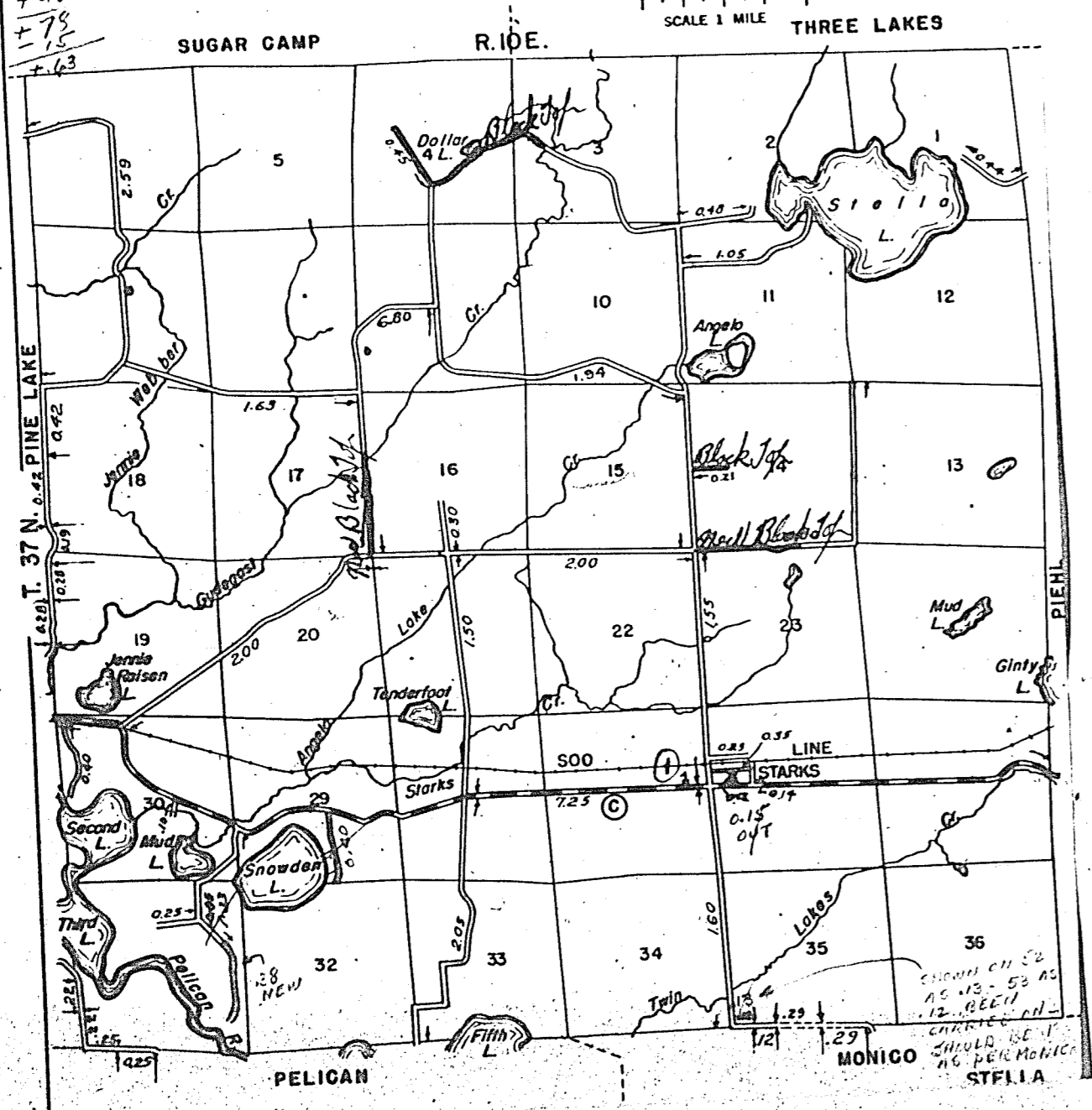


STATE HIGHWAY COMM. OF WISCONSIN  
TOWN PLAT RECORD

Town	STELLA				ONEIDA			
	Fed For. Dev. Rds.	State Park Rds.	State Fire Lane	State Trunks	County Trunks	Local Roads	Symbols	
12-15-54			0.29	7.25	32.67	Sch. A		
9-30-55			0.29	7.25	32.30	Cem. B		
9-20-50			0.29	7.25	27.92	Tower C		
9-29-51			0.29	7.25	31.62	Gate D		
10-3-52			0.29	7.25	31.62			
9-23-53			0.29	7.25	32.67			

Certified as Correct By Town Chairman: *Bert Sheppard*

MILEAGES SHOWN ARE NET



TOWN PLAT RECORD - WISCONSIN HIGHWAY COMMISSION  
TOWN OF SUGAR CAMP  
LINCOLN - VILAS CO. COUNTY OF ONEIDA.

SCALE 1 MILE

TABLE OF MILEAGES

Date of Last Cor.	Fed. Rd.	St. Rd.	Fire Lane	State Trunks	County Trunks	Local Roads
12-5-52			0.38	9.60	18.92	62.54
9-29-53			0.38	9.68	19.74	62.18
12-14-54			0.38	9.68	19.74	62.69
11-25-55			0.38	9.48	19.67	62.52
10-25-48			0.38	11.20	18.90	56.38
10-4-49			0.38	10.98	18.90	56.07
9-22-50			0.38	10.98	18.90	57.24
11-13-51			0.38	10.98	18.90	58.61

MILEAGES SHOWN ARE NET

- LEGEND
- STATE TRUNK HIGHWAY SYSTEM
  - COUNTY TRUNK HIGHWAY SYSTEM
  - TOWN ROADS
  - St. Park Rds.
  - Fire Lane

C.T.M.  
+ 64  
- 50  
- 21  
- 71  
+ 64  
- 107

CERTIFIED AS CORRECT  
*Bert Sheppard*  
TOWN CHAIRMAN  
SUGAR CAMP