

STATE HIGHWAY COMM. OF WISCONSIN
TOWN PLAT RECORD

Town	Date of Last Corr.	County ONEIDA						Sym-bols
		Fed. For. Dev. Rds.	State Park Rds.	State Fire Lane	State Trunks	County Trunks	Local Roads	
CASSIAN	12-15-54				6.26	6.29	61.93	Sch. &
	11-12-55				6.26	6.29	60.10	Cem. □
	11-6-56				6.26	6.29	70.73	Tower ⊕
	11-16-51				6.26	6.29	65.62	Gate =
	11-13-52				6.26	6.29	65.37	
	9-24-53				6.26	6.29	67.46	

Certified as Correct By Town Chairman: Marvin Herwies

MILEAGES SHOWN ARE NET

Sec 12 and 13: 37-6.40
 2: 37-6.15
 3: 37-7.1
 4: 37-7.25
 5: 37-7.25

all 22

7. 8.5
 8. 1.5
 9. 1.5
 10. 1.5
 11. 1.5
 12. 1.5
 13. 1.5
 14. 1.5
 15. 1.5
 16. 1.5
 17. 1.5
 18. 1.5
 19. 1.5
 20. 1.5
 21. 1.5
 22. 1.5
 23. 1.5
 24. 1.5
 25. 1.5
 26. 1.5
 27. 1.5
 28. 1.5
 29. 1.5
 30. 1.5
 31. 1.5
 32. 1.5
 33. 1.5
 34. 1.5
 35. 1.5
 36. 1.5

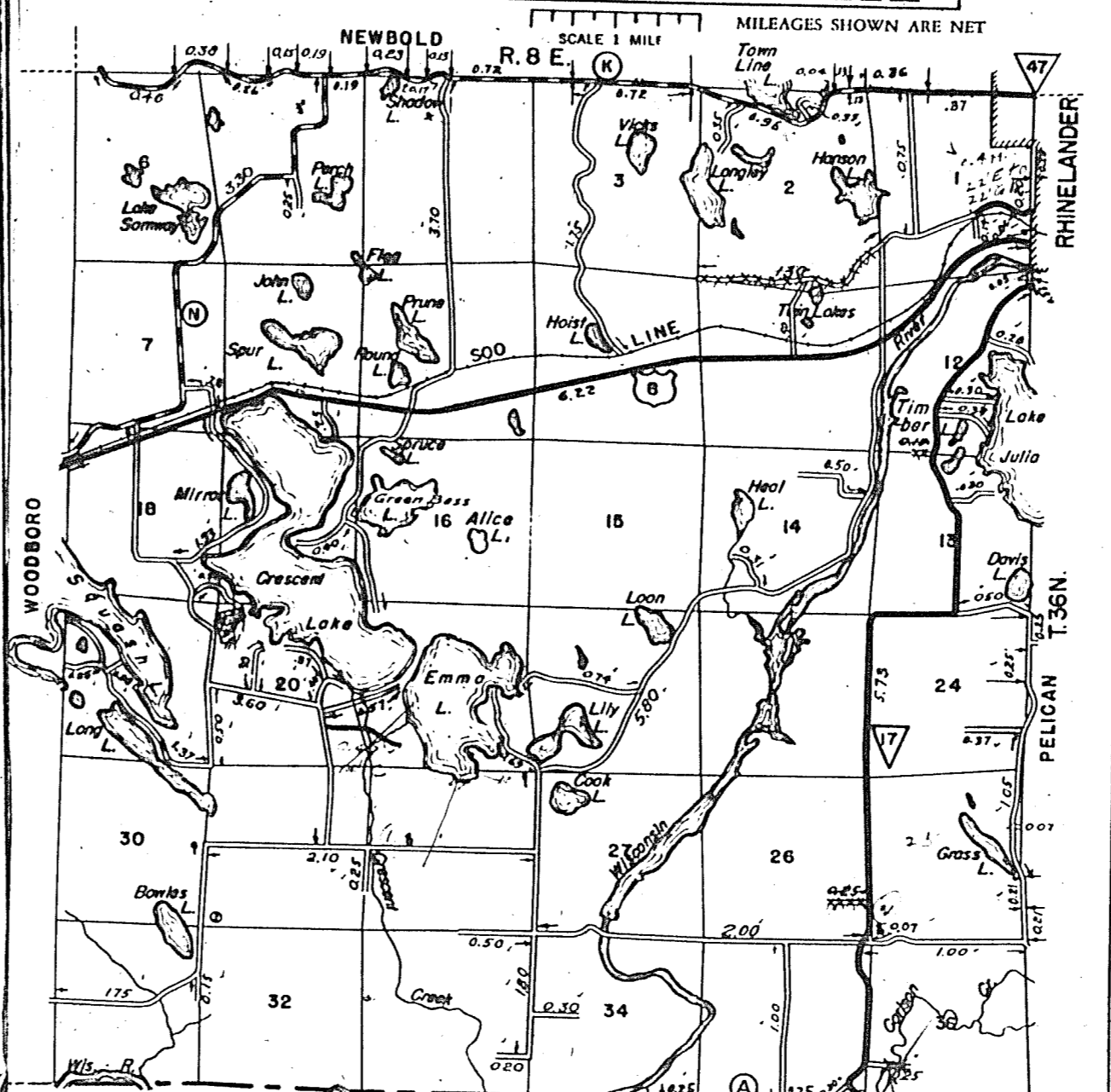
CASSIAN

STATE HIGHWAY COMM. OF WISCONSIN
TOWN PLAT RECORD

Town	Date of Last Corr.	County ONEIDA						Sym-bols
		Fed. For. Dev. Rds.	State Park Rds.	State Fire Lane	State Trunks	County Trunks	Local Roads	
CRESCENT	12-20-54				12.32	6.64	43.36	Sch. &
	9-19-55				12.32	6.64	43.76	Cem. □
	10-11-56				12.32	6.64	42.43	Tower ⊕
	10-16-51				12.43	6.64	42.28	Gate =
	12-8-52				12.27	6.64	42.19	
	9-14-53				12.32	6.64	41.67	

Certified as Correct By Town Chairman: Robert Oak

MILEAGES SHOWN ARE NET



#1 under 20 N.W. corner is not a town road

NEW IRONING
 12.14
 STEEL UNITS
 LAM. TREATED
 TIMBER DECK

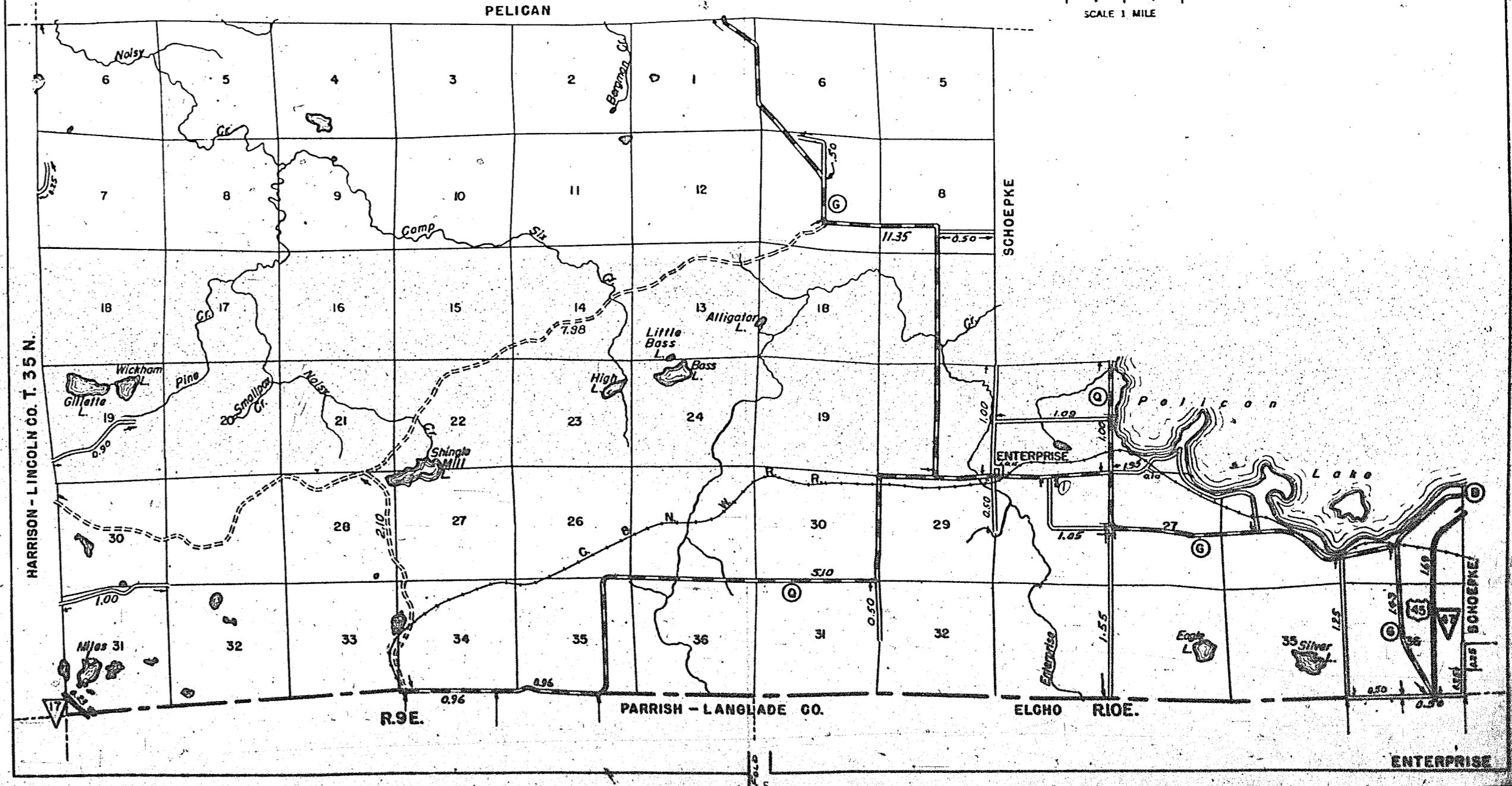
CRESCENT

STATE HIGHWAY COMM. OF WISCONSIN
TOWN PLAT RECORD

Town	Date of Last Corr.	County ONEIDA						Sym-bols	
		Fed. For. Dev. Rds.	State Park Rds.	State Fire Lane	State Trunks	County Trunks	Local Roads		
ENTERPRISE	12-15-54				10.00	1.92	19.99	12.44	Sch. &
	10-10-55				10.00	1.92	19.84	13.04	Cem. □
	10-27-56				10.00	1.92	19.84	13.64	Tower ⊕
	9-28-51				10.00	1.92	19.99	12.76	Gate =
	10-3-52				10.00	1.92	19.99	12.96	
	9-23-53				10.00	1.92	19.99	12.44	

Certified as Correct By Town Chairman: Ernie Hult

MILEAGES SHOWN ARE NET



ENTERPRISE