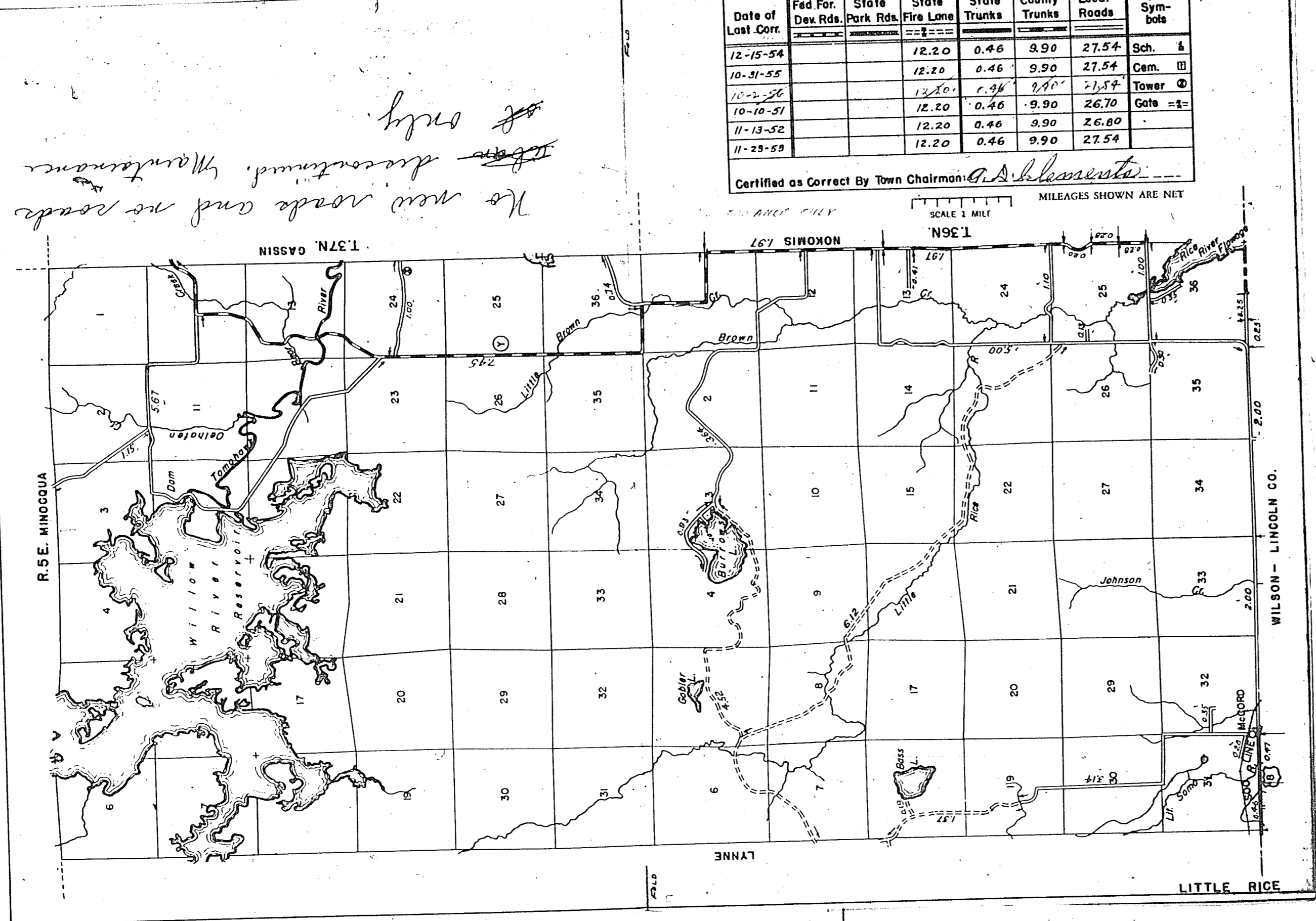


STATE HIGHWAY COMM. OF WISCONSIN  
TOWN PLAT RECORD

Town	LITTLE RICE				County			Local Roads	Sym-bols
	Fed. For. Dev. Rds.	State Park Rds.	State Fire Lane	State Trunks	County Trunks	Local Roads	Sym-bols		
Date of Last Corr.									
12-15-54			12.20	0.46	9.90	27.54	Sch. 1		
10-31-55			12.20	0.46	9.90	27.54	Cem. 11		
10-2-56			12.20	0.46	9.90	27.54	Tower 10		
10-10-57			12.20	0.46	9.90	26.70	Gate 11		
11-13-52			12.20	0.46	9.90	26.80			
11-23-53			12.20	0.46	9.90	27.54			

Certified as Correct By Town Chairman: *A. D. Schaefer*

SCALE 1 MILE  
MILEAGES SHOWN ARE NET



*The new roads and no roads  
are discontinued. Maintenance  
only*

STATE HIGHWAY COMM. OF WISCONSIN  
TOWN PLAT RECORD

Town	LYNNE				County			Local Roads	Sym-bols
	Fed. For. Dev. Rds.	State Park Rds.	State Fire Lane	State Trunks	County Trunks	Local Roads	Sym-bols		
Date of Last Corr.									
12-20-54			0	2.12	0	60.55	Sch. 1		
9-19-55			0	2.12	0	60.55	Cem. 11		
10-10-57			0	2.12	0	58.23	Tower 10		
11-12-52			0	2.12	0	59.23	Gate 11		
11-10-53			0	2.12	0	59.17			

Certified as Correct By Town Chairman: *Nancy Galbraith*

SCALE 1 MILE  
MILEAGES SHOWN ARE NET

