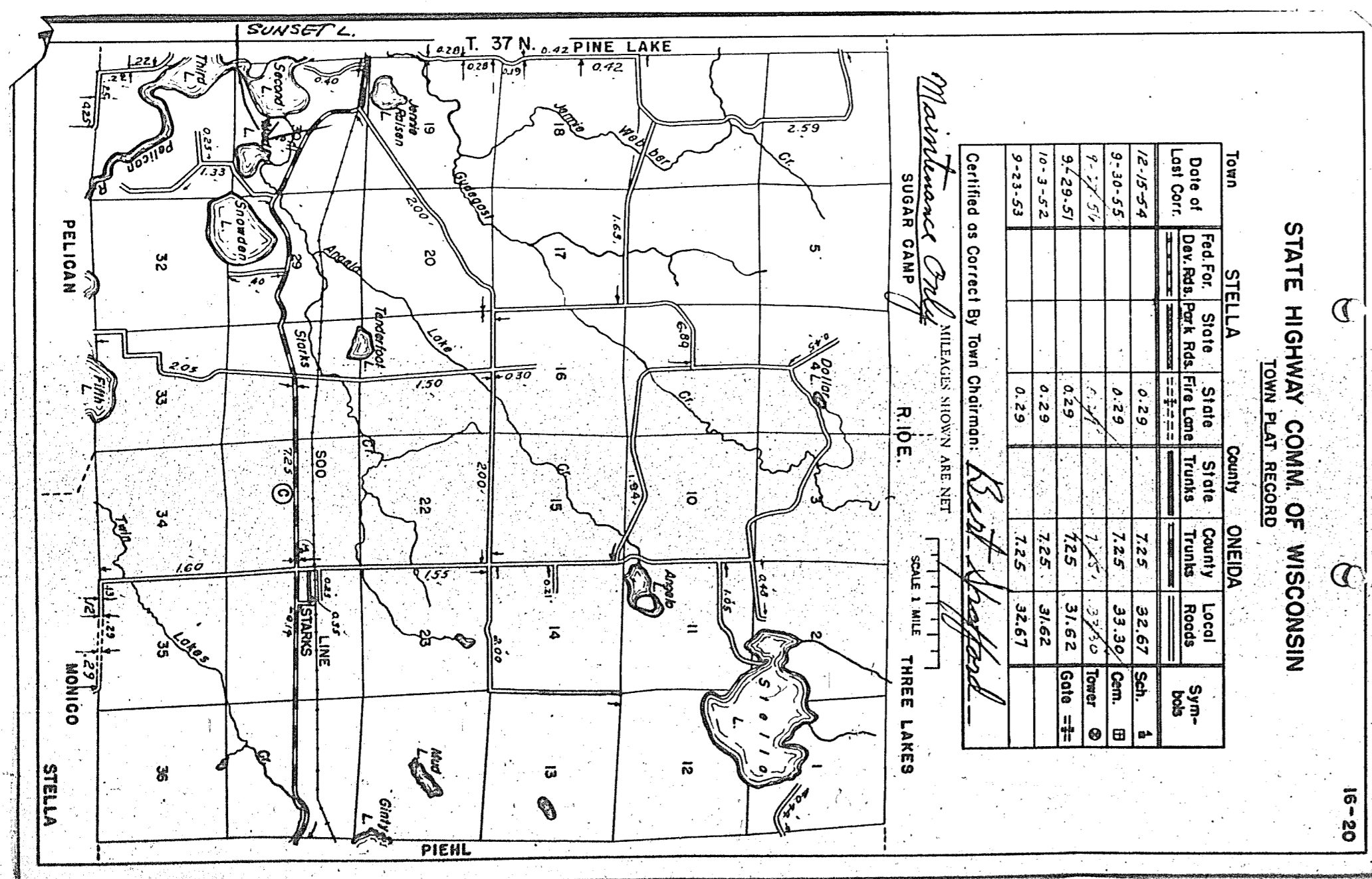
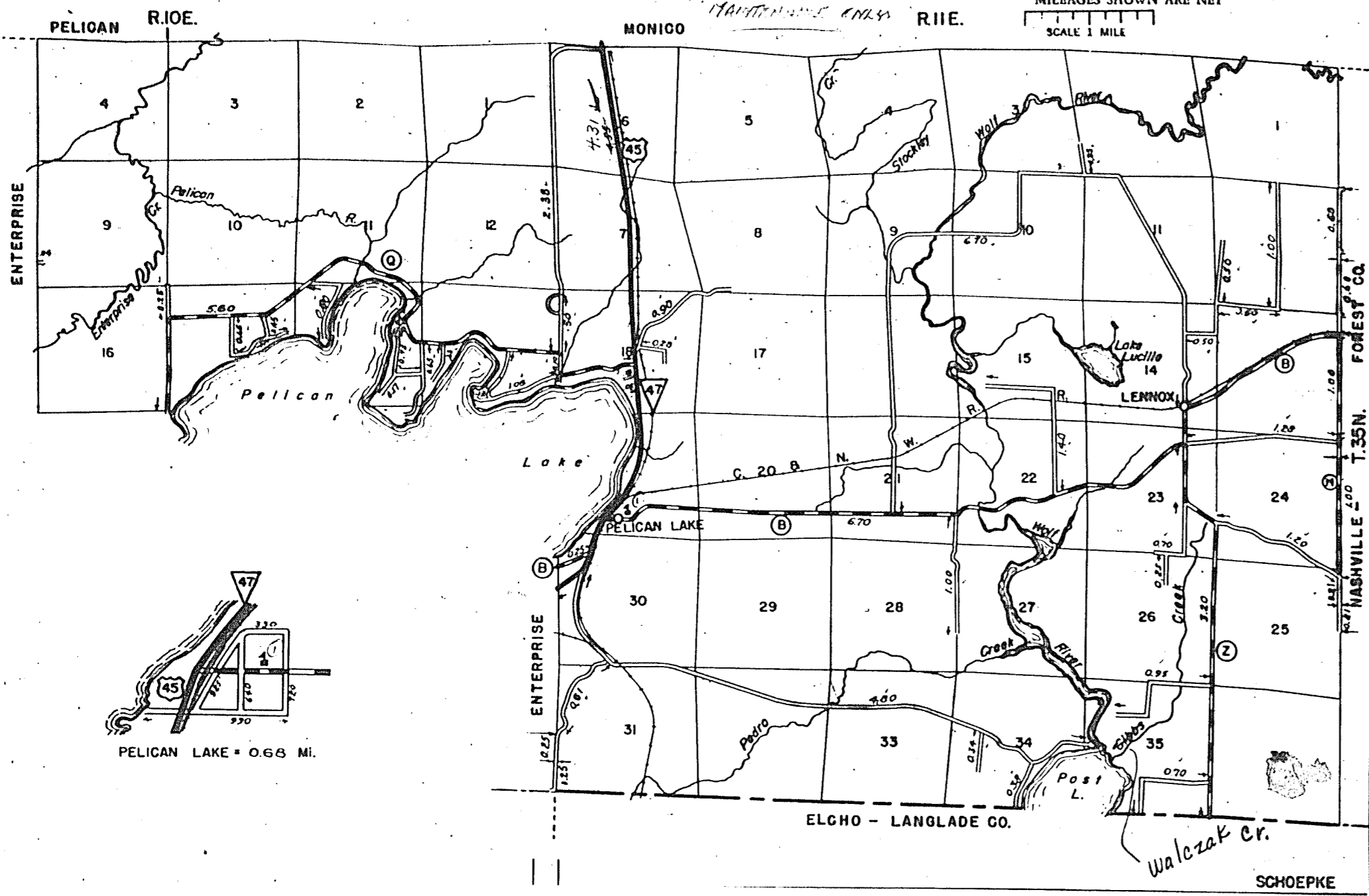


STATE HIGHWAY COMM. OF WISCONSIN  
TOWN PLAT RECORD

Date of Last Corr.	Town SCHOEPKE			County ONEIDA			Sym-bols
	Fed. Pav. Rds.	State Park Rds.	State Fire Lanes	State Trunks	County Trunks	Local Roads	
12-15-54				4.55	16.75	34.47	Sch. 1
10-31-54				4.55	16.75	34.47	Cam. 1
8-21-50				4.55	16.75	34.00	Tower 1
9-20-51				4.55	16.75	34.00	Gate 1
10-3-52				4.55	16.75	34.42	
9-23-53				4.55	16.75	35.71	

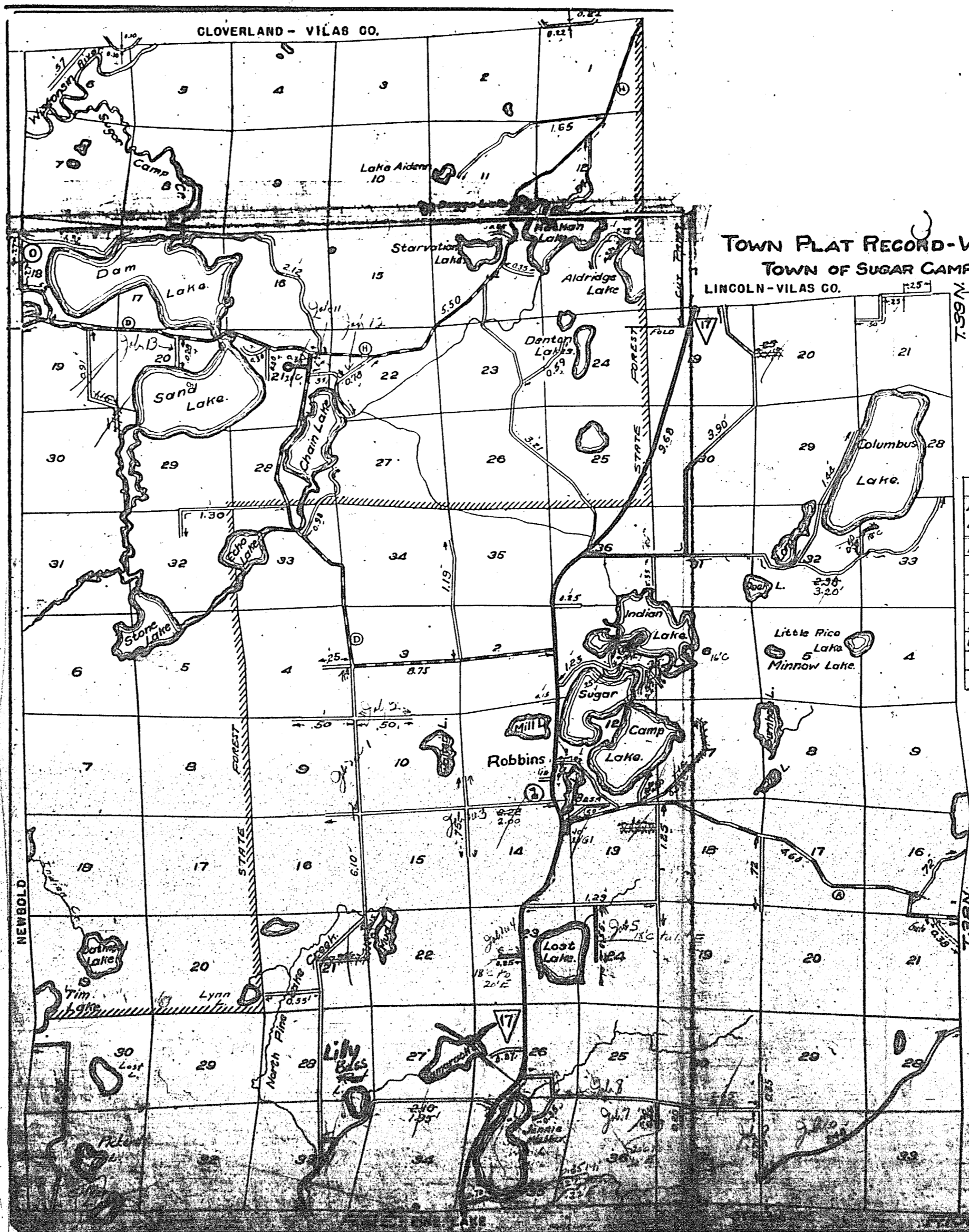
Certified as Correct By Town Chairman: *Ed. [Signature]*



STATE HIGHWAY COMM. OF WISCONSIN  
TOWN PLAT RECORD

Date of Last Corr.	Town STELLA			County ONEIDA			Sym-bols
	Fed. Pav. Rds.	State Park Rds.	State Fire Lanes	State Trunks	County Trunks	Local Roads	
12-15-54				0.29	7.25	32.67	Sch. 1
9-30-55				0.29	7.25	33.36	Cam. 1
7-17-51				0.29	7.25	37.60	Tower 1
9-29-51				0.29	7.25	31.62	Gate 1
10-3-52				0.29	7.25	31.62	
9-23-53				0.29	7.25	32.67	

Certified as Correct By Town Chairman: *R. J. [Signature]*



TOWN PLAT RECORD - WISCONSIN HIGHWAY COMMISSION  
TOWN OF SUGAR CAMP COUNTY OF ONEIDA

Date of Last Corr.	Town SUGAR CAMP			County ONEIDA			Sym-bols
	Fed. Pav. Rds.	State Park Rds.	State Fire Lanes	State Trunks	County Trunks	Local Roads	
12-5-52				0.38	9.60	18.92	62.54
9-29-53				0.38	9.60	19.74	62.18
12-14-54				0.38	9.60	19.74	62.69
11-25-55				0.38	9.60	19.67	63.52
10-21-56				0.38	9.60	19.67	63.78
10-4-49				0.38	10.98	18.90	56.07
9-28-50				0.38	10.98	18.90	57.35
11-13-51				0.38	10.98	18.90	58.61

MILEAGES SHOWN ARE NET

LEGEND

- STATE TRUNK HIGHWAY SYSTEM
- COUNTY TRUNK HIGHWAY SYSTEM
- TOWN ROADS SYSTEM
- State Park Rds.
- Fire Lanes

Handwritten notes and signatures, including 'OK Now' and '12-15-54'.