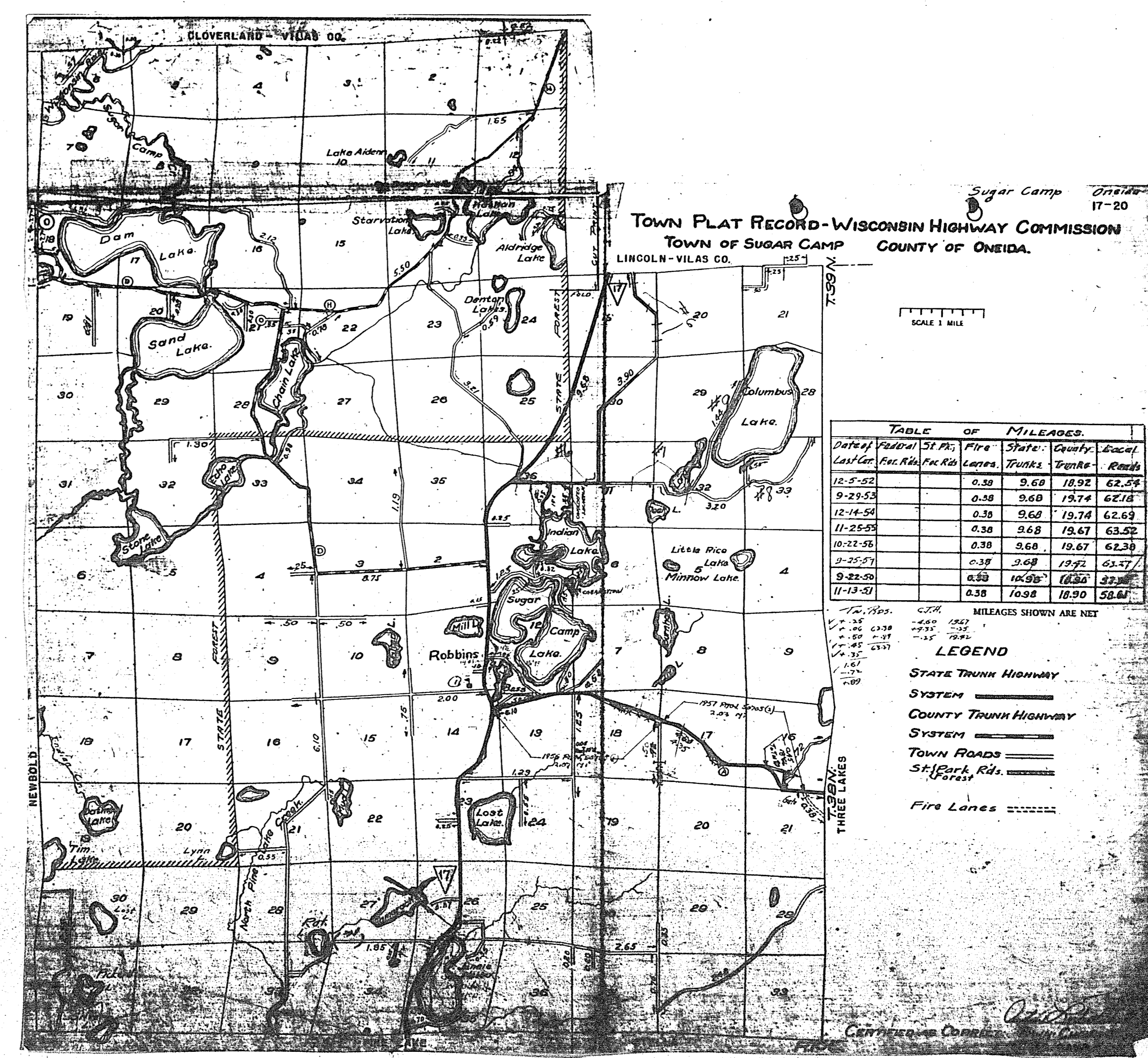
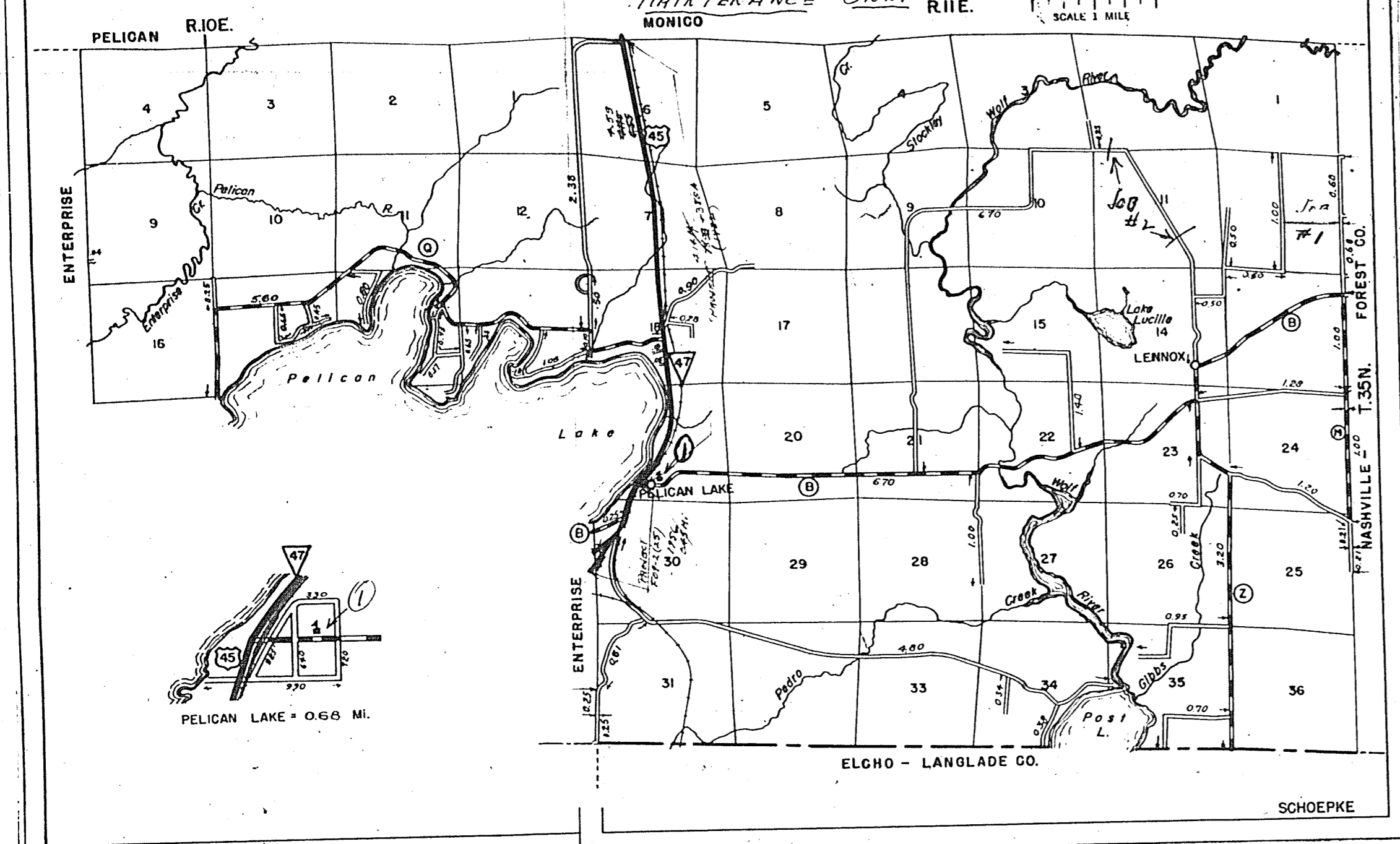


STATE HIGHWAY COMM. OF WISCONSIN  
TOWN PLAT RECORD

Town	SCHOEPKE					County			Local Roads	Sym-bols
	Date of Last Corr.	Fed For. Dev. Rds.	State Park Rds.	State Fire Lanes	State Trunks	County Trunks	Local Roads	Local Roads		
	12-15-54				4.55	16.75	34.47	Sch. &		
	12-9-53				4.55	16.75	34.47	Cam. III		
	10-31-56				4.31	16.75	34.47	Tower ①		
	9-30-57				4.57	16.75	34.47	Gate -1-		
	10-3-52				4.55	16.75	34.42			
	9-23-53				4.55	16.75	35.77			

Certified as Correct By Town Chairman: *James C. Hillier*

MAINTENANCE ONLY R.IIE. MILEAGES SHOWN ARE NET SCALE 1 MILE



TOWN PLAT RECORD - WISCONSIN HIGHWAY COMMISSION  
TOWN OF SUGAR CAMP  
LINCOLN-VILAS CO. COUNTY OF ONEIDA

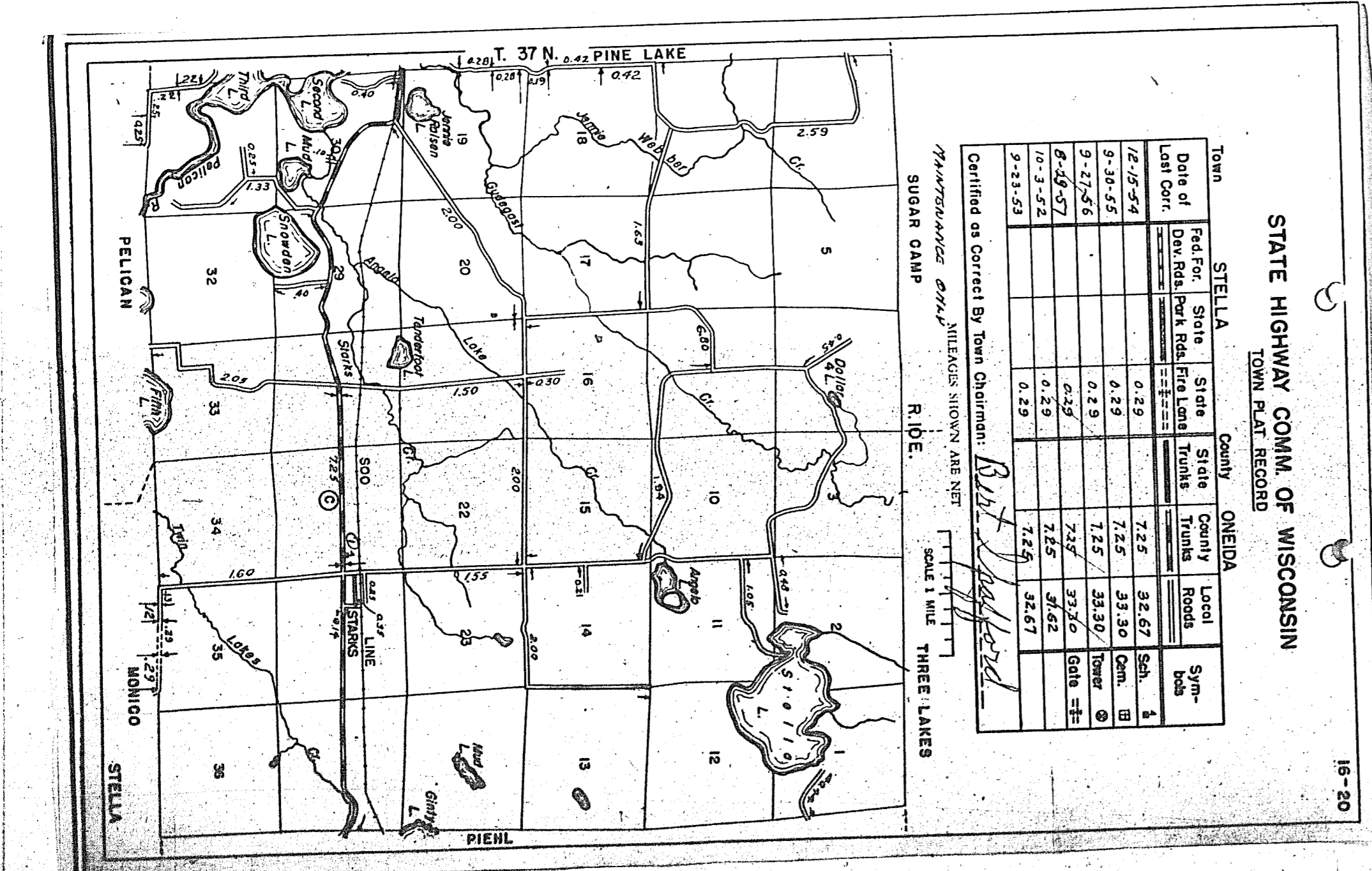
TABLE OF MILEAGES

Date of Last Corr.	Fed. For. Dev. Rds.	St. Park Rds.	Fire Lanes	State Trunks	County Trunks	Local Roads
12-5-52			0.38	9.68	18.92	62.54
9-29-53			0.38	9.68	19.74	62.78
12-14-54			0.38	9.68	19.74	62.69
11-25-55			0.38	9.68	19.67	63.52
10-22-56			0.38	9.68	19.67	62.38
9-25-57			0.38	9.68	19.72	63.57
9-22-59			0.38	10.98	18.90	58.61
11-13-51			0.38	10.98	18.90	58.61

MILEAGES SHOWN ARE NET

LEGEND

- STATE TRUNK HIGHWAY SYSTEM
- COUNTY TRUNK HIGHWAY SYSTEM
- TOWN ROADS
- St. Park Rds.
- Fire Lanes



STATE HIGHWAY COMM. OF WISCONSIN  
TOWN PLAT RECORD

Town	STELLA					County			Local Roads	Sym-bols
	Date of Last Corr.	Fed For. Dev. Rds.	State Park Rds.	State Fire Lanes	State Trunks	County Trunks	Local Roads	Local Roads		
	12-15-54				0.29	7.25	32.67	Sch. &		
	9-30-55				0.29	7.25	33.30	Cam. III		
	9-27-56				0.29	7.25	33.30	Tower ①		
	8-19-57				0.29	7.25	33.76	Gate -1-		
	10-3-52				0.29	7.25	31.62			
	9-23-53				0.29	7.25	32.67			

Certified as Correct By Town Chairman: *Walter J. ...*

MAINTENANCE ONLY R.I.I.E. MILEAGES SHOWN ARE NET SCALE 1 MILE