

STATE HIGHWAY COMM. OF WISCONSIN
TOWN PLAT RECORD

15-20

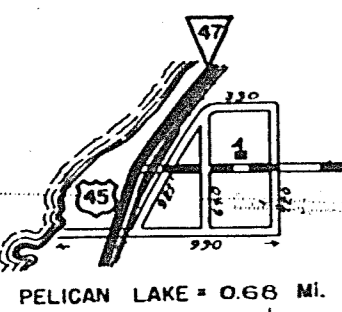
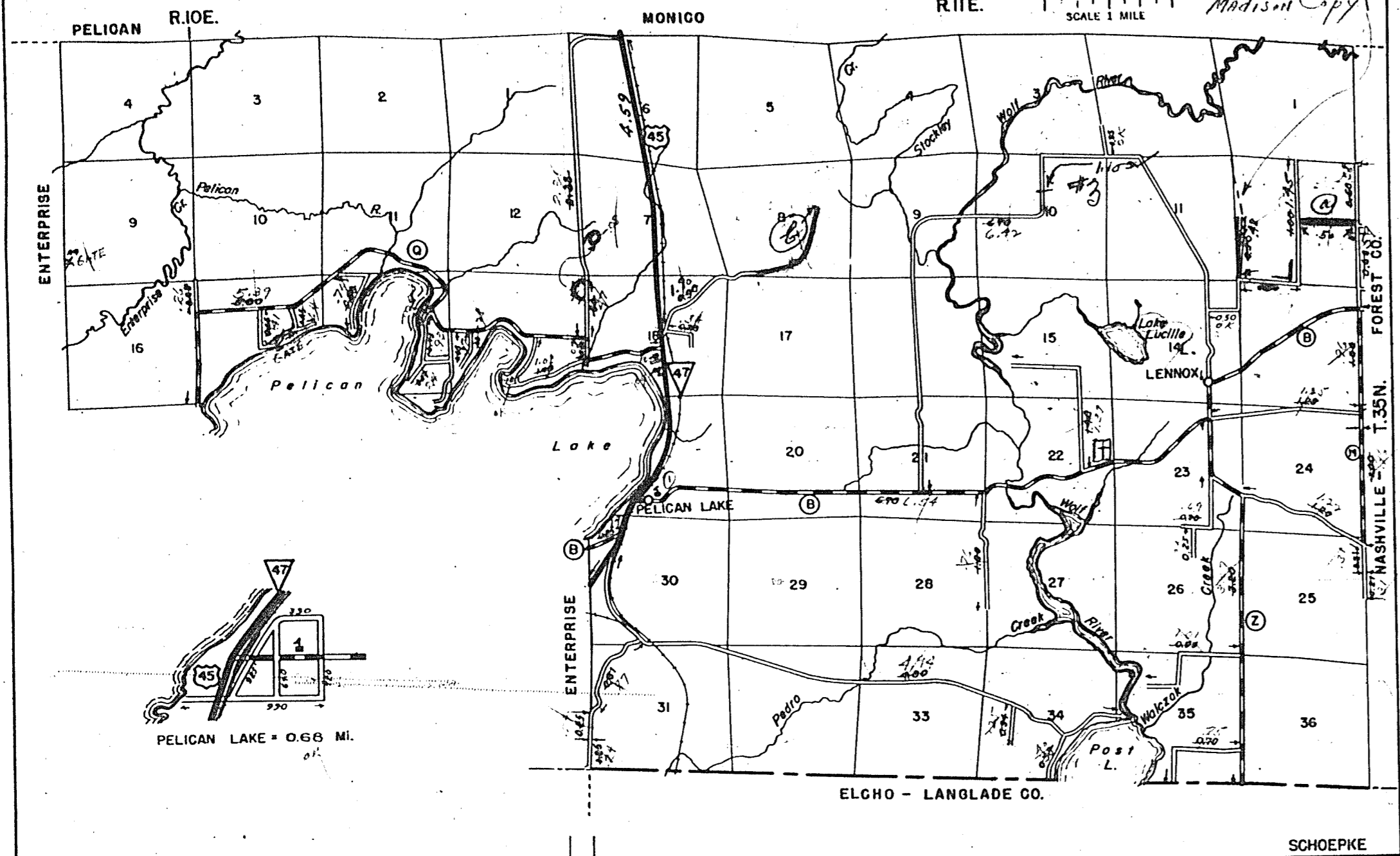
Town	SCHOEPKE				County			ONEIDA	Sym- bols
	Fed For. Dev. Rds.	State Park Rds.	State Fire Lane	State Trunks	County Trunks	Local Roads			
12-15-54				4.55	16.75	34.47	Sch. I		
12-9-55				4.55	16.75	34.47	Cam. II		
10-31-56				4.31	16.75	34.47	Tower III		
9-30-57				4.59	16.75	34.47	Gate III		
9-30-58				4.59	16.75	35.54			
9-23-58				4.55	16.75	35.77			

Certified as Correct By Town Chairman: *Edwin C. Phelan*

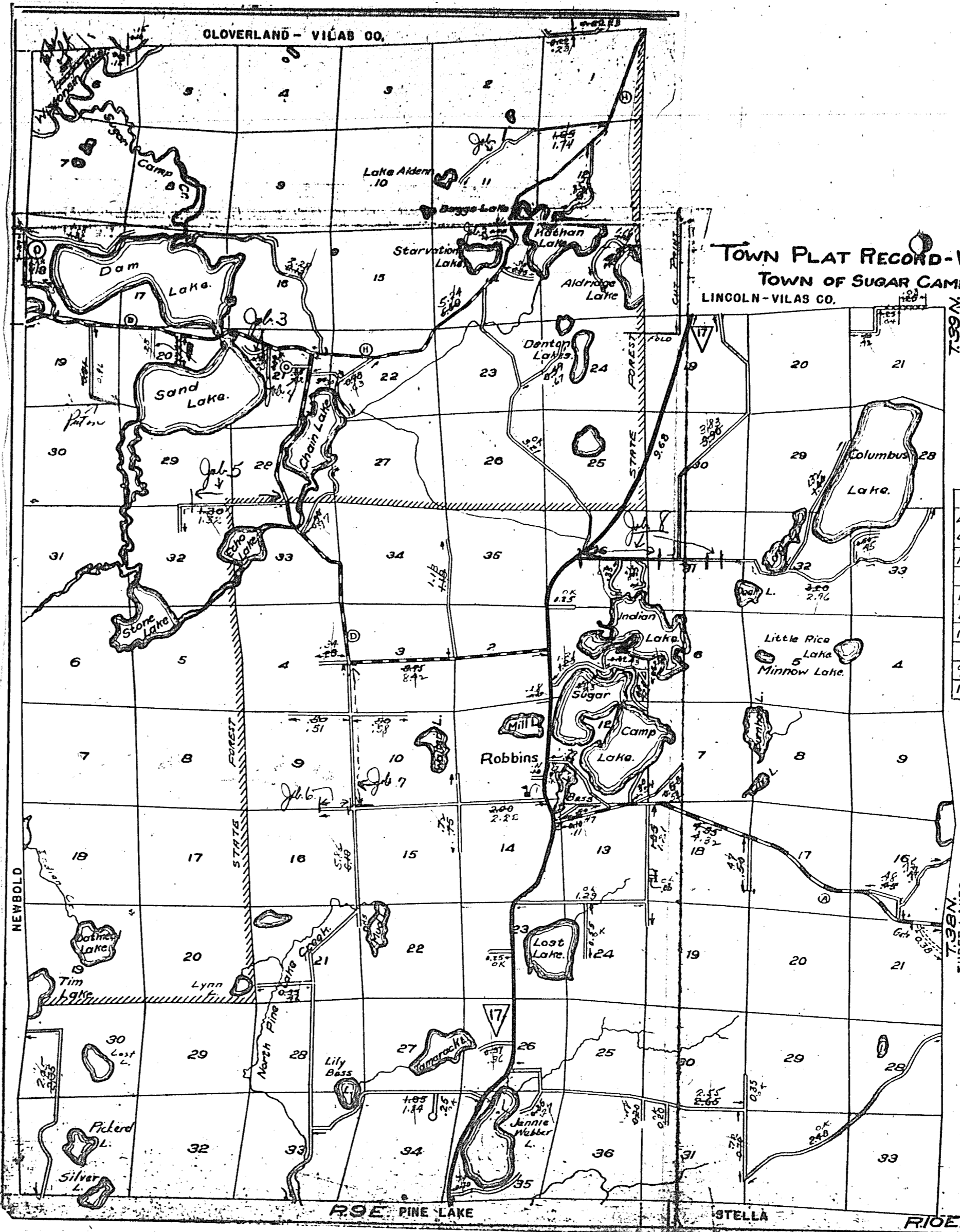
MILEAGES SHOWN ARE NET

SCALE 1 MILE

Madison Copy
Bill O'Neil
City Clerk
City of Schoepke



PELICAN LAKE = 0.66 MI.



TOWN PLAT RECORD - WISCONSIN HIGHWAY COMMISSION
TOWN OF SUGAR CAMP
LINCOLN - VILAS CO.

Sugar Camp Oneida
17-20

SCALE 1 MILE

Madison Copy

Date of Last Corr.	TABLE OF MILEAGES.						
	Fed. Rd.	St. Ph.	Fire Lanes	State Trunks	County Trunks	Local Roads	
12-5-52			0.38	9.68	18.92	62.54	
9-29-53			0.38	9.68	19.74	62.18	
12-14-54			0.38	9.68	19.74	62.69	
11-25-55			0.38	9.68	19.67	63.52	
10-22-56			0.38	9.68	19.67	62.30	
9-25-57			0.38	9.68	18.42	63.27	
9-24-58			0.38	9.48	18.75	61.37	
11-13-51			0.38	10.98	18.90	58.61	

MILEAGES SHOWN ARE NET

Maintenance Only

LEGEND

- STATE TRUNK HIGHWAY SYSTEM
- COUNTY TRUNK HIGHWAY SYSTEM
- TOWN ROADS
- St. Park Rds.
- Forest
- Fire Lanes

CERTIFIED AS CORRECT: *Edwin C. Phelan*
TOWN CHAIRMAN
SUGAR CAMP

STATE HIGHWAY COMM. OF WISCONSIN
TOWN PLAT RECORD

16-20

Town	STELLA				County			ONEIDA	Sym- bols
	Fed For. Dev. Rds.	State Park Rds.	State Fire Lane	State Trunks	County Trunks	Local Roads			
12-15-54				0.29	7.25	32.67	Sch. I		
9-30-55				0.29	7.25	33.30	Cam. II		
9-27-56				0.29	7.25	33.30	Tower III		
8-29-57				0.29	7.25	33.30	Gate III		
8-27-58				0.29	7.25	33.04			
9-24-58				0.29	7.25	32.67			

Certified as Correct By Town Chairman: *Robert J. Hoff*

MILEAGES SHOWN ARE NET

SCALE 1 MILE

Madison Copy

