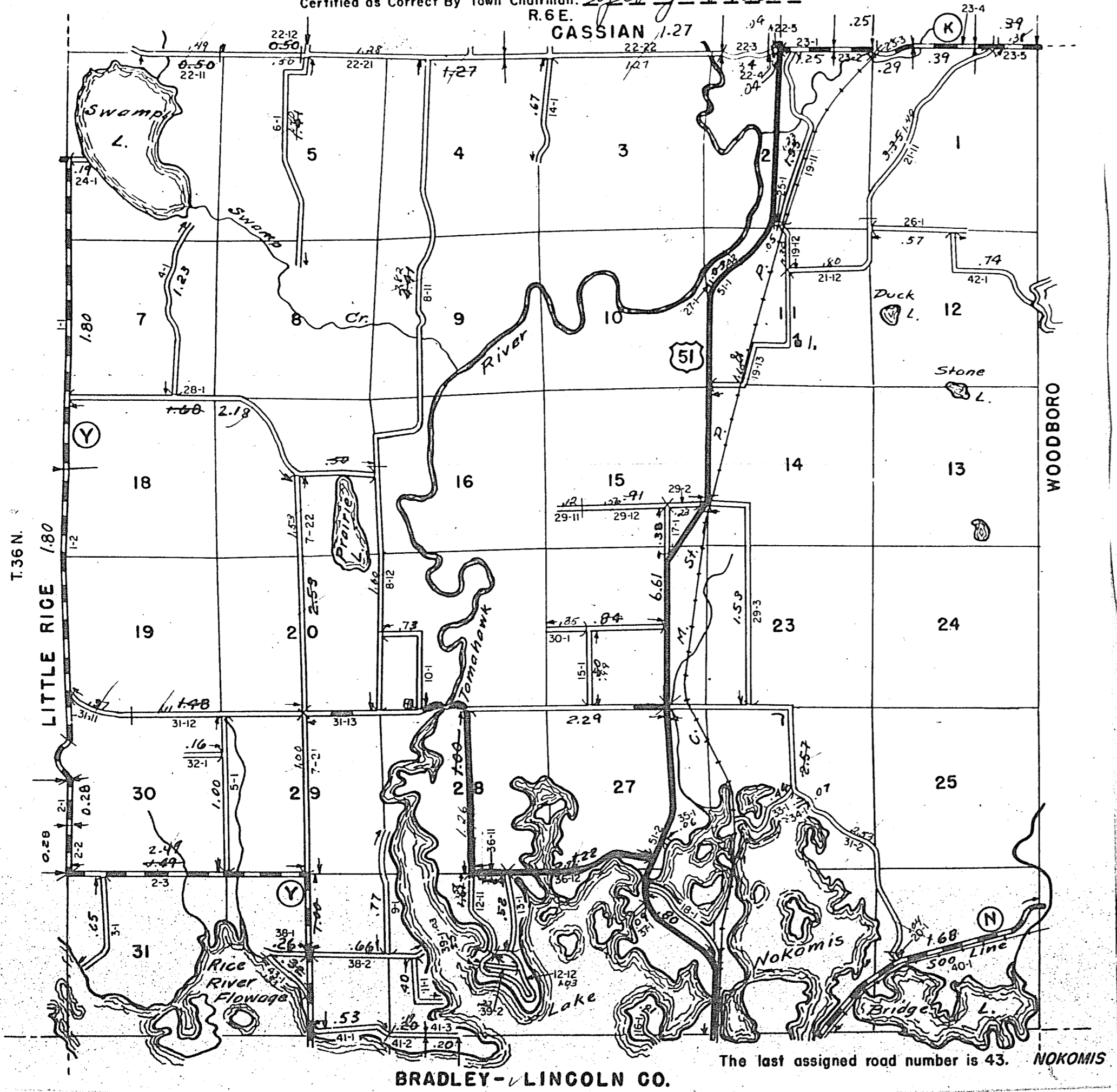


STATE HIGHWAY COMM. OF WISCONSIN  
TOWN PLAT RECORD

Town - NOKOMIS		County - ONEIDA (43-011)			
Date of Last Corr.	State Trunks	County Trunks	Local Roads	Symbols	
1-1-58	6.61	7.25	44.15	Sch. 1	Ⓐ
1-1-59	6.61	7.18	43.51	Cem. 1	Ⓑ
1-12-60	6.61	7.18	43.50	Tower 1	Ⓒ

43.50 - 39 = 43.20  
Certified as Correct By Town Chairman: *George White*



BRADLEY-LINCOLN CO.

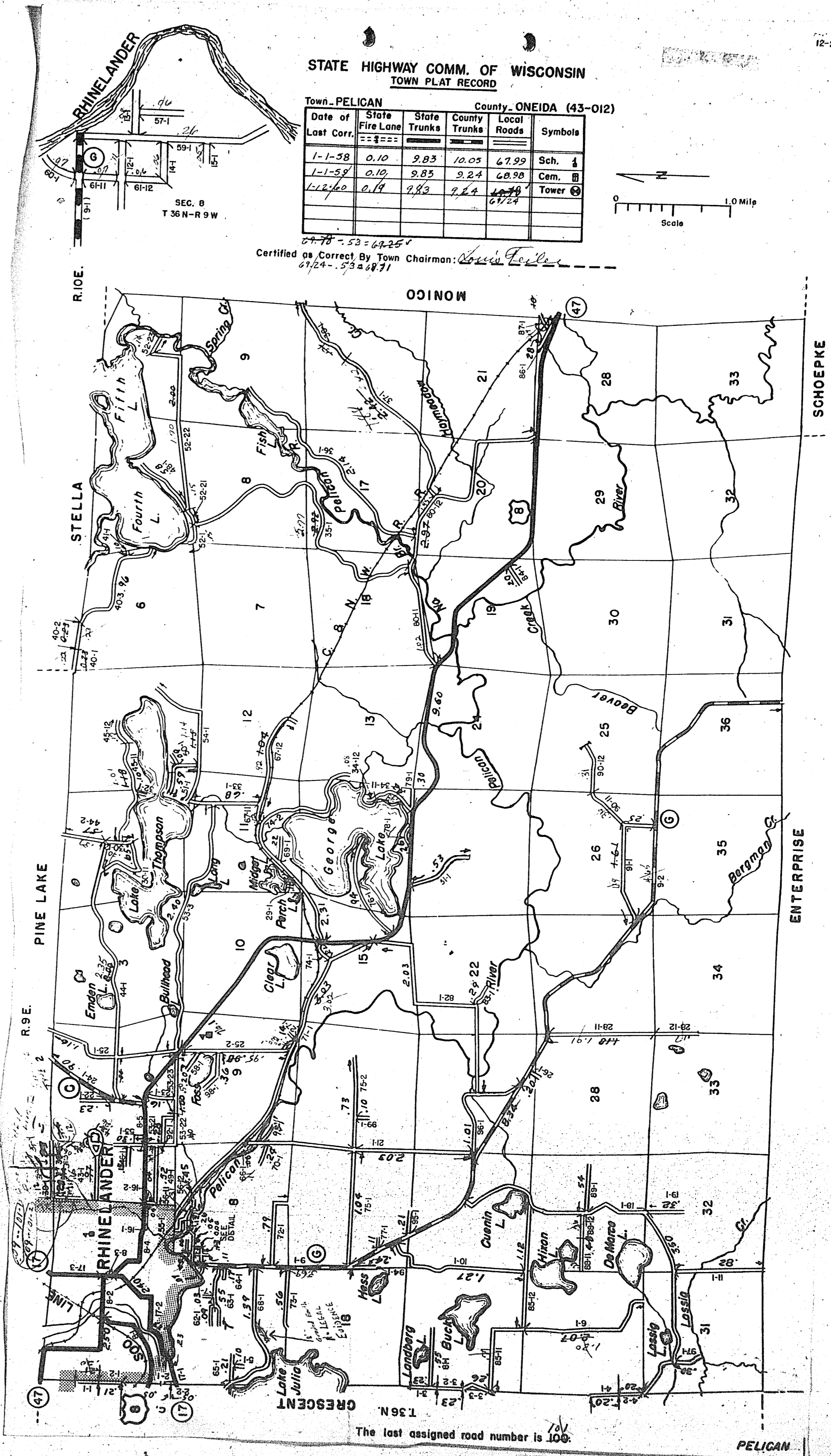
The last assigned road number is 43. NOKOMIS

11-20

STATE HIGHWAY COMM. OF WISCONSIN  
TOWN PLAT RECORD

Town - PELICAN		County - ONEIDA (43-012)			
Date of Last Corr.	State Fire Lane	State Trunks	County Trunks	Local Roads	Symbols
1-1-58	0.10	9.83	10.05	67.99	Sch. 1
1-1-59	0.10	9.83	9.24	68.98	Cem. 1
1-12-60	0.19	9.83	9.24	67.24	Tower 1

67.24 - 53 = 67.25  
Certified as Correct By Town Chairman: *Louis Feller*



The last assigned road number is 100.

PELICAN