

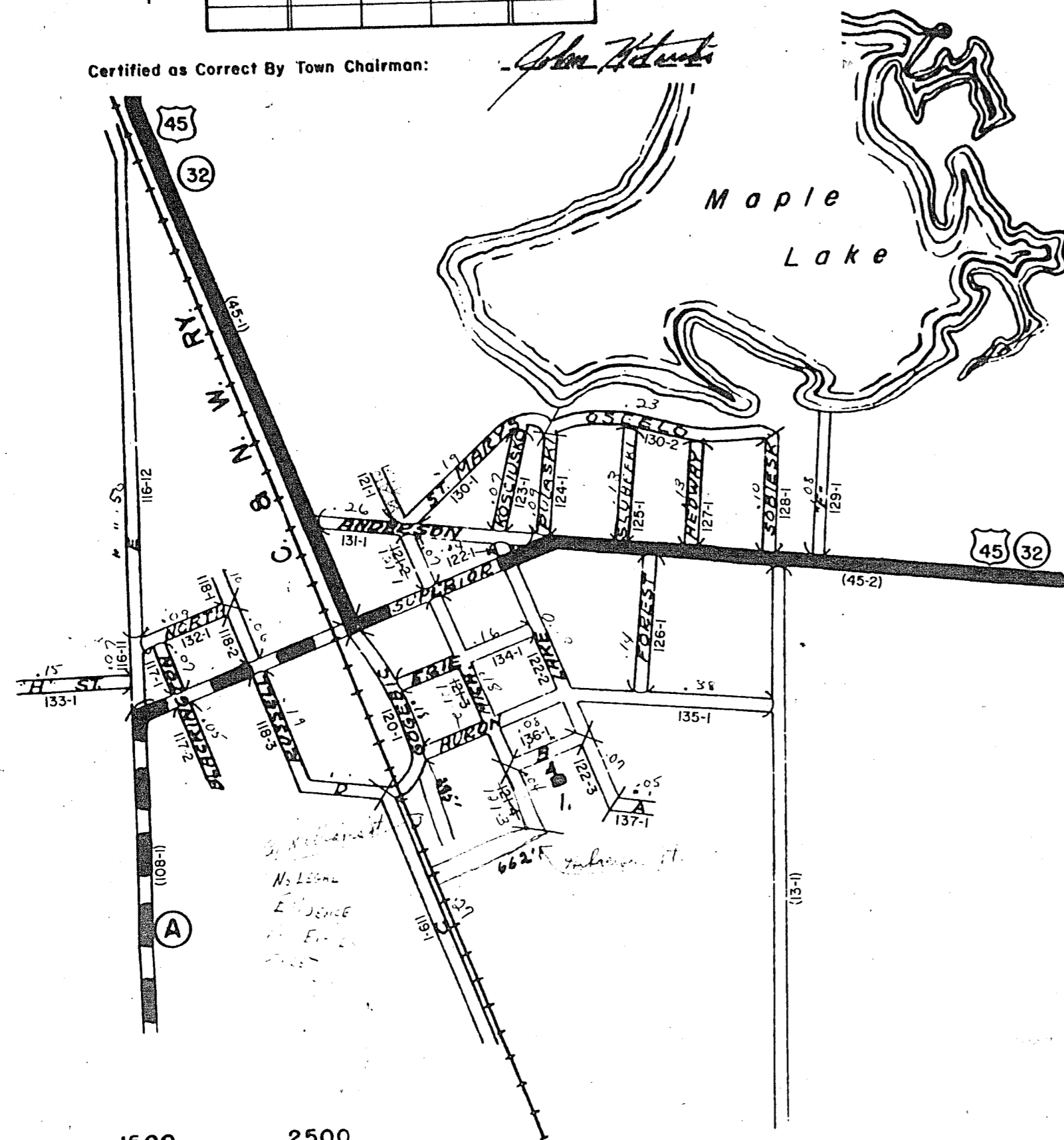
STATE HIGHWAY COMM. OF WISCONSIN
TOWN PLAT RECORD

THREE LAKES - UNINCORPORATED (43-018B)

Date of Last Corr.	State Trunks	County Trunks	Local Roads	Symbols
1-1-58	0	0	1.14	Sch. 4
1-1-59	0	0	1.14	Cem. II
1-2-60	0	0	4.40	Tower

Certified as Correct By Town Chairman:

John H. ...



0 500 1500 2500
SCALE IN FEET

Name of Town	County	State Trunk	County Trunk	Local Road	Symbols
ANDERSON	ONEIDA	1314	1314	1314	Sch. 4
...

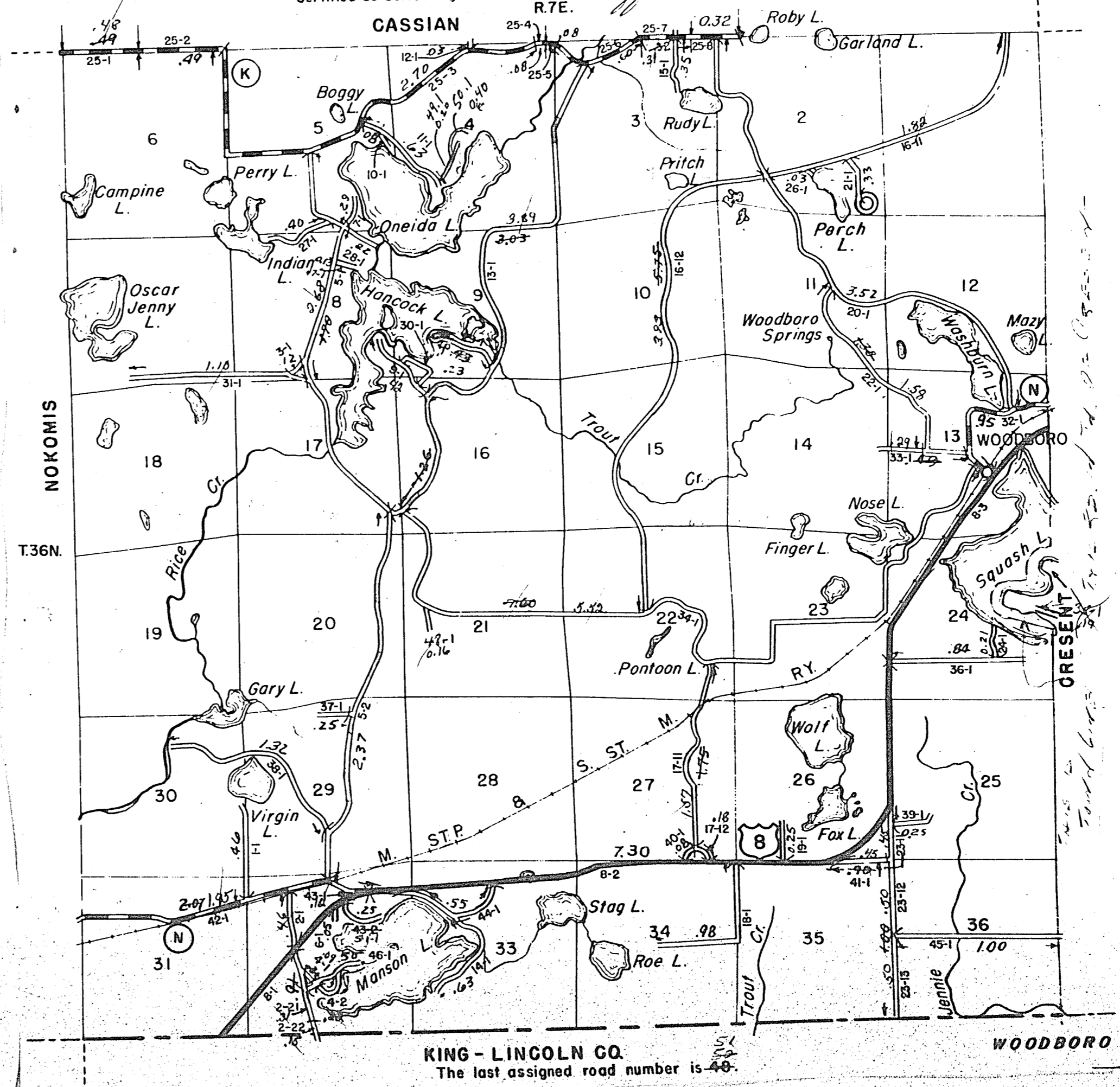
ONEIDA

STATE HIGHWAY COMM. OF WISCONSIN
TOWN PLAT RECORD

Town - WOODBORO County - ONEIDA (43-019)

Date of Last Corr.	State Trunks	County Trunks	Local Roads	Symbols
1-1-58	7.30	7.47	44.35	Sch. 4
1-1-59	7.30	7.21	42.75	Cem. II
1-12-60	7.30	7.20	42.72	Tower

Certified as Correct By Town Chairman: *Clifford Brown*



0 1.0 Mile
Scale

KING - LINCOLN CO.
The last assigned road number is 40.

WOODBORO