

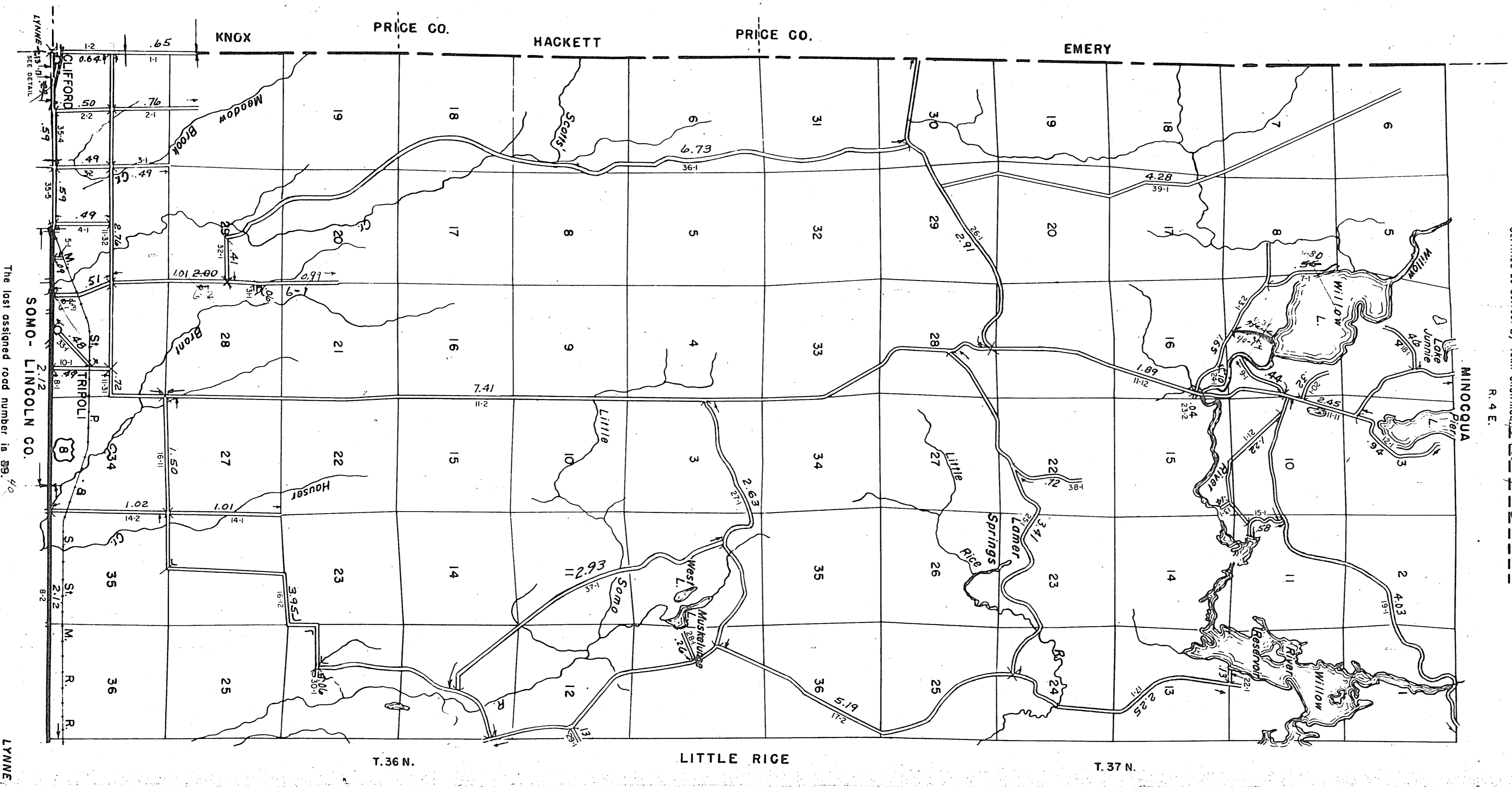
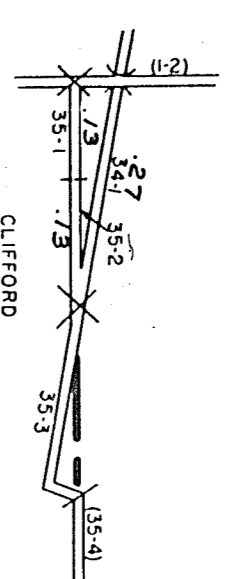
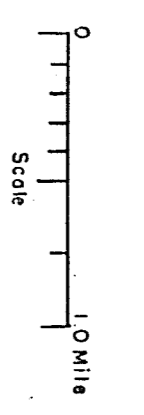
STATE HIGHWAY COMM. OF WISCONSIN

TOWN PLAT RECORD

Town, LYNNE County, ONEIDA (43-007)

Date of Last Cert.	State Trunks	County Trunks	Local Roads	Local Symbols
1-1-58	2.12	0	70.01	Sch. A
1-1-59	2.12	0	49.20	Com. B
1-1-60	2.12	0	73.21	Tower C
1-1-61	2.12	0	73.77	

73-21-0-28: 72-53
 Certified as correct by Town Chairman, *Walter Galt*
 R. 4 E.



SOMO - LINCOLN CO.
 The last assigned road number is 89.40

LYNNE