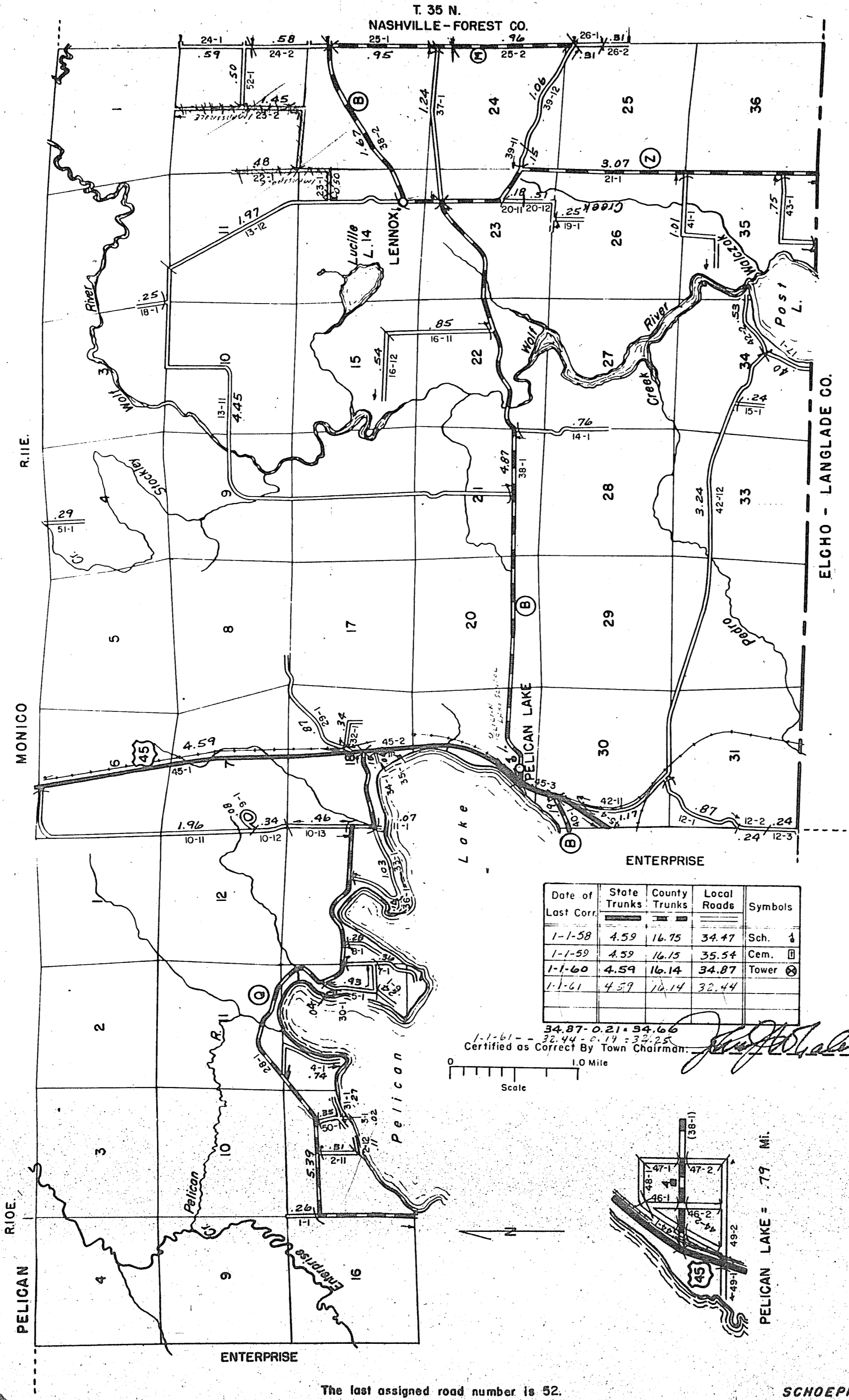
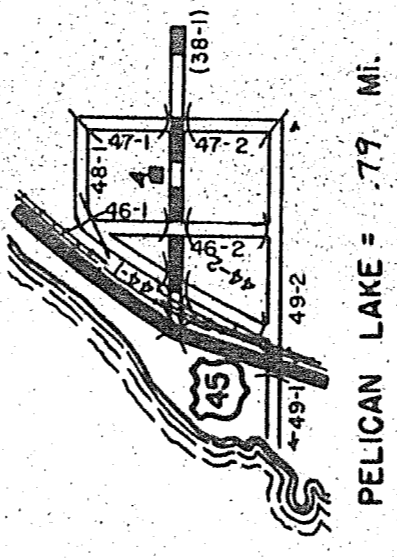
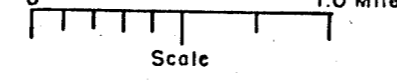


STATE HIGHWAY COMM. OF WISCONSIN  
TOWN PLAT RECORD  
Town - SCHOEPKE County - ONEIDA (43-015)



Date of Last Corr.	State Trunks	County Trunks	Local Roads	Symbols
1-1-58	4.59	16.75	34.47	Sch. 1
1-1-59	4.59	16.15	35.54	Cem. □
1-1-60	4.59	16.14	34.87	Tower ⊙
1-1-61	4.59	16.14	32.44	

1-1-61 - 34.87 - 0.21 = 34.66  
32.44 - 0.19 = 32.25  
Certified as Correct By Town Chairman: *John J. Holman*



PELICAN LAKE = .79 MI.

The last assigned road number is 52.

SCHOEPKE

Town Schoepke  
State Highway Commission of Wisconsin  
RURAL PLATTED AREA - LOCAL ROAD SHEET LIST  
Community Pelican Lake (43-015) County Oneida  
Date 7-26-60  
Sheet 1 of 1  
Plate 15-20

Road No.	Street Name	Gross Length		Intersections No.	Net Length (Feet)
		Miles	Feet		
44-2			0.09		
44-2			0.09		
46-1			0.08		
46-2			0.08		
47-1			0.08		
47-2			0.08		
48-1			0.06		
48-2			0.06		
49-1			0.06		
49-2			0.17		
Totals					

Certified as Correct: *John J. Holman* 9.79  
Page Miles 0.74