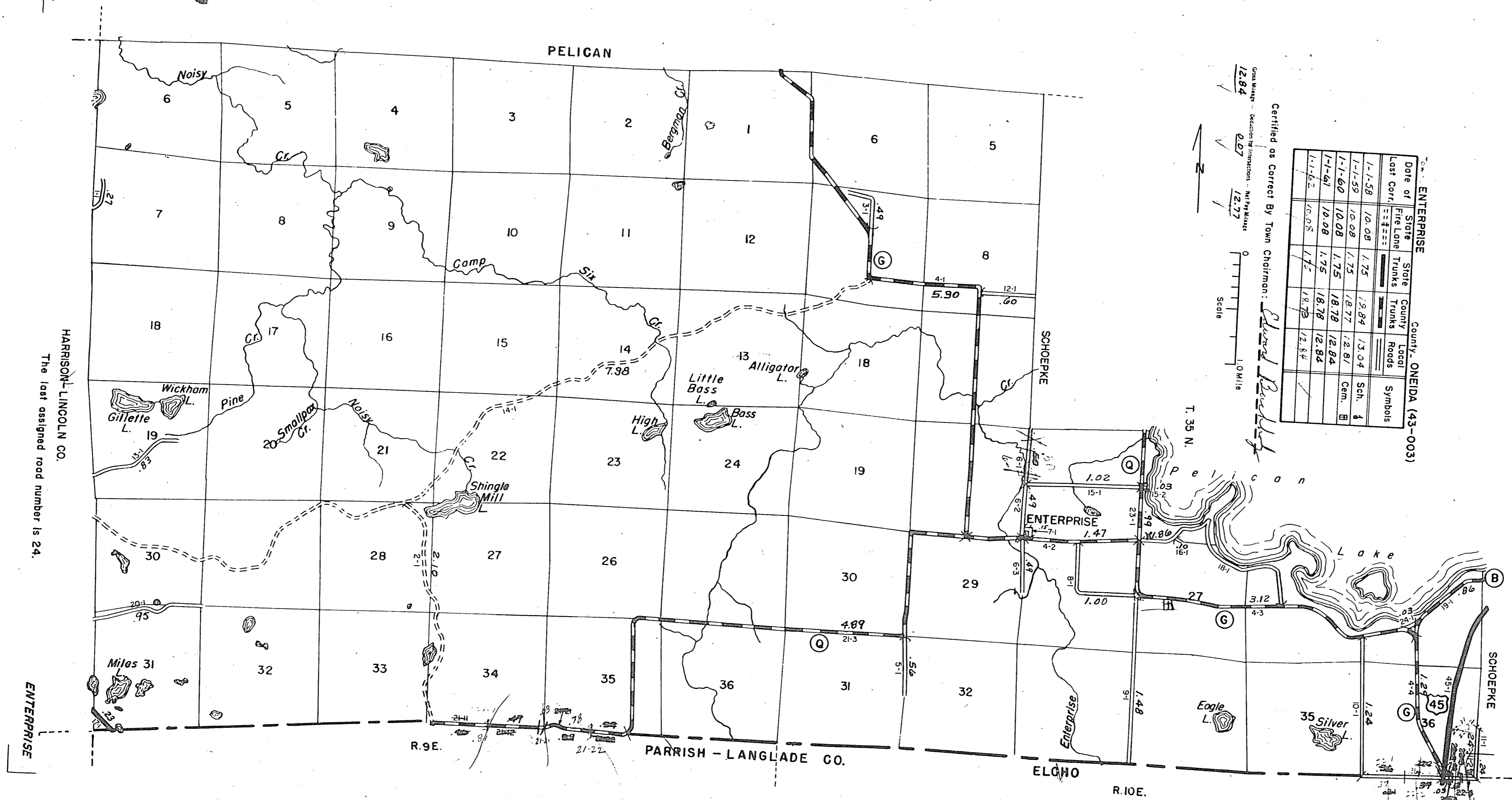


STATE HIGHWAY COMM. OF WISCONSIN
TOWN PLAT RECORD

ENTERPRISE County - ONEIDA (43-003)

Date of State	State	County	Local	Symbols
Last Corr.	File	Trunks	Roads	
1-1-58	10.08	1.75	2.84	13.04
1-1-59	10.08	1.75	1.87	12.81
1-1-60	10.08	1.75	1.87	12.81
1-1-61	10.08	1.75	1.87	12.81
1-1-62	10.08	1.75	1.87	12.81

Certified as Correct By Town Chairman: *[Signature]*
 Date Made: 12.84
 Section of Map: 2.27
 Scale: 0 1.0 Mile



HARRISON-LINCOLN CO.
The last assigned road number is 24.

ENTERPRISE