

STATE HIGHWAY COMM. OF WISCONSIN  
TOWN PLAT RECORD

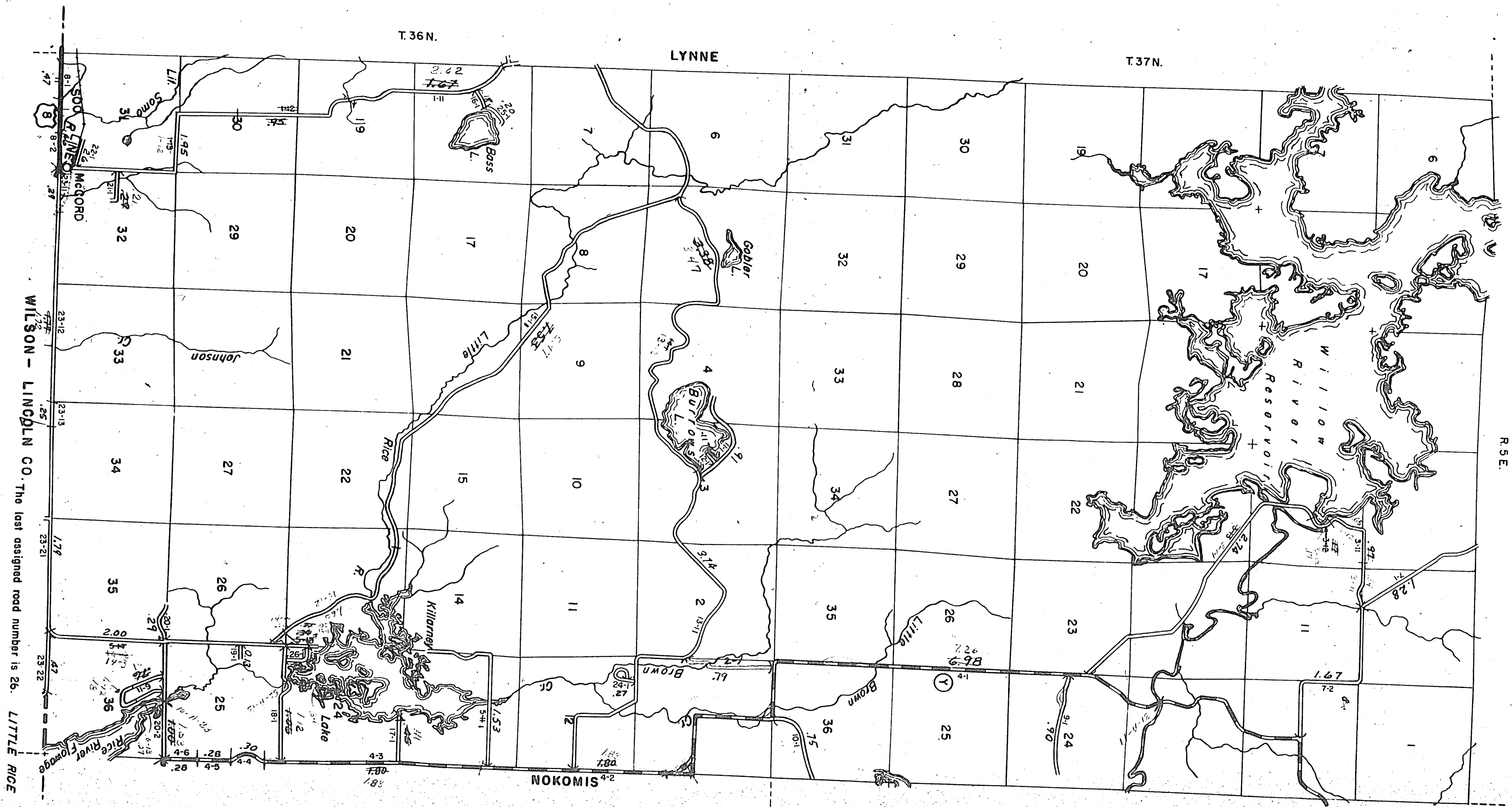
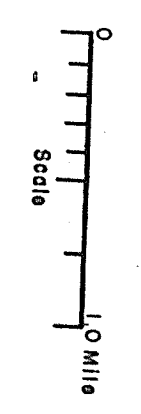
Town: LITTLE RICE County: ONEIDA (43-006)

Date of Last Conf.	State Mileage	State Trunks	County Trunks	Local Roads	Symbol
1-1-58	3.53	0.46	9.90	36.93	Sh. A
1-1-59	0	0.46	9.36	38.79	Cam. B
1-1-60	0	0.46	9.36	38.24	
1-1-61	0.46	0.46	9.36	37.54	
1-1-62	0.46	0.46	9.36	40.04	
1-1-63	0.46	0.46	9.67	41.01	

Scale  
44-00  
41.01  
40.58

Certified as Correct By Town Chairman: *Edith Miller*

R 35 E.



WILSON - LINCOLN CO. The last assigned road number is 26. LITTLE RICE