

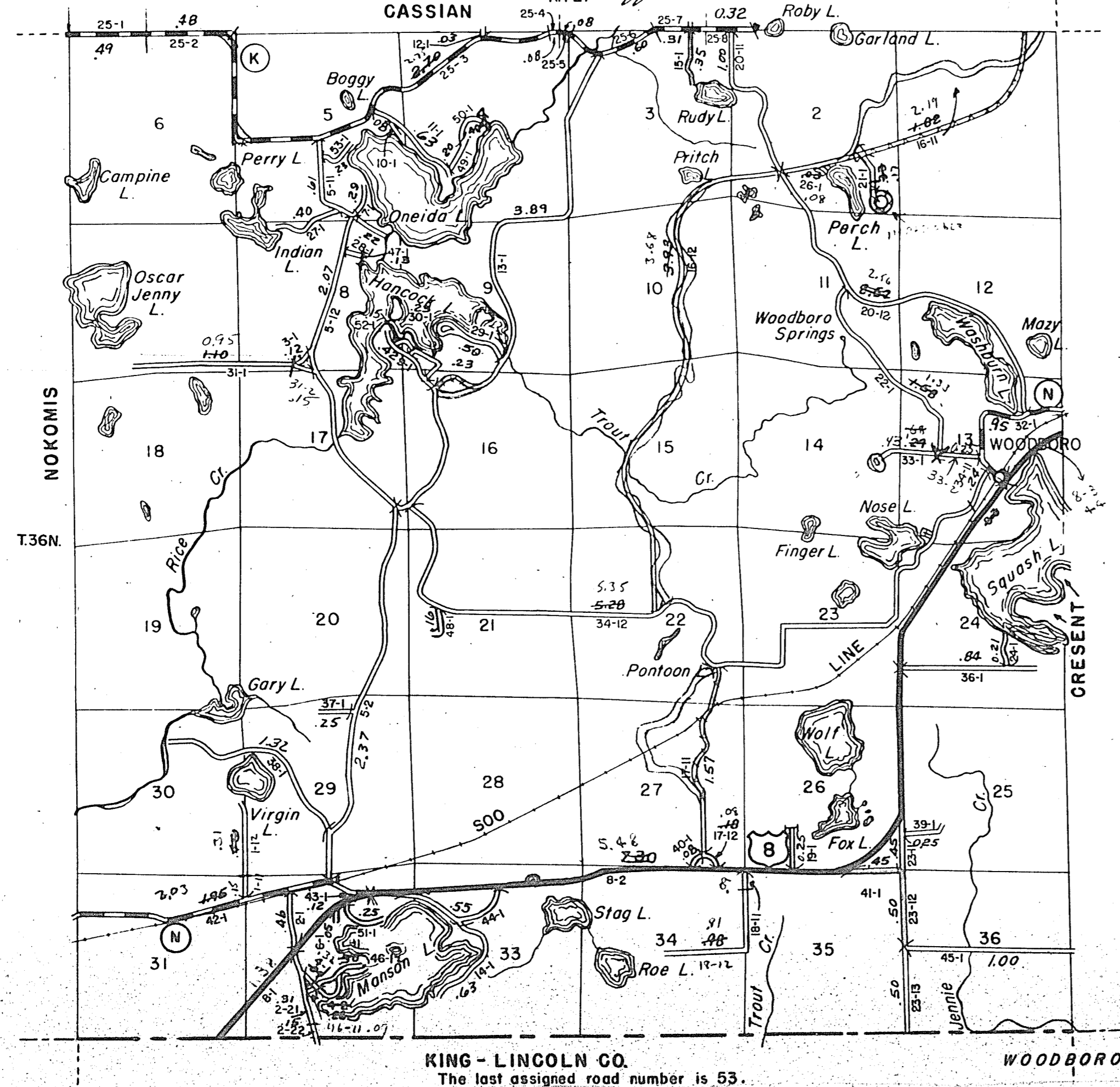
STATE HIGHWAY COMM. OF WISCONSIN  
TOWN PLAT RECORD

Town - WOODBORO County - ONEIDA (43-019)

Date of Last Corr.	State Trunks	County Trunks	Local Roads	Symbols
1-1-58	7.30	7.47	44.35	Sch. 1
1-1-59	7.30	7.21	42.73	Cem. 1
1-1-60	7.30	7.20	43.72	
1-1-61	7.30	7.20	43.87	
1-1-62	7.30	7.20	44.10	
1-1-63	7.30	7.21	44.31	

Gross Mileage - Deduction for Intersections - Net Pay Mileage  
 44.10      0.32      43.78  
 44.31           43.99

Certified as Correct By Town Chairman: *Clifford Brown*  
R.T.E.

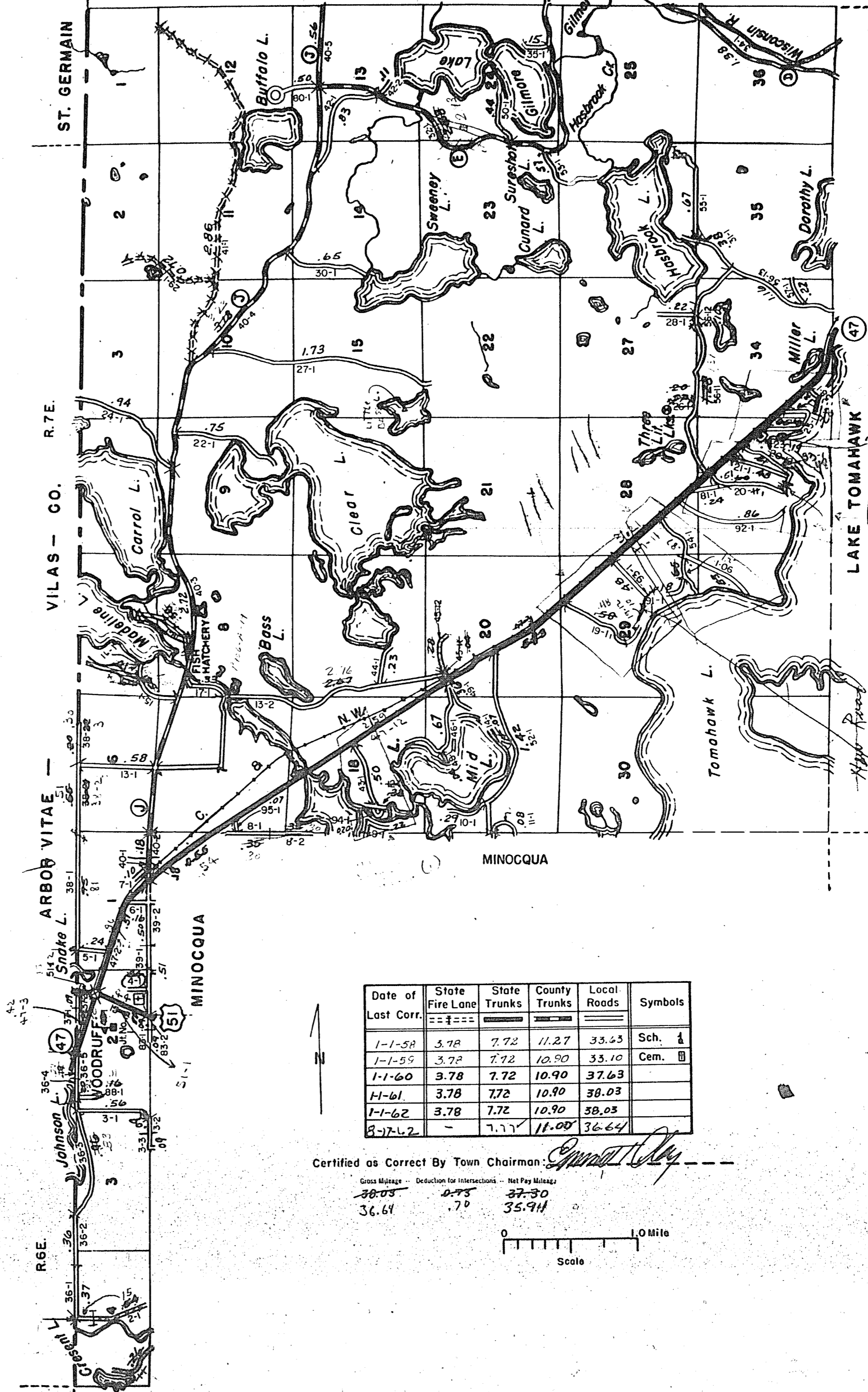


KING - LINCOLN CO.  
The last assigned road number is 53.

WOODBORO

STATE HIGHWAY COMM. OF WISCONSIN  
TOWN PLAT RECORD

Town - WOODRUFF County - ONEIDA (43-020 A)  
T. 39 N. NEWBOLD



Date of Last Corr.	State Fire Lane	State Trunks	County Trunks	Local Roads	Symbols
1-1-58	3.78	7.72	11.27	33.53	Sch. 1
1-1-59	3.78	7.72	10.90	33.10	Cem. 1
1-1-60	3.78	7.72	10.90	37.63	
1-1-61	3.78	7.72	10.90	38.03	
1-1-62	3.78	7.72	10.90	38.03	
2-7-72	-	7.77	11.00	36.64	

Certified as Correct By Town Chairman: *Edward Kelly*  
R.T.E.

Gross Mileage - Deduction for Intersections - Net Pay Mileage  
 38.03      0.75      37.28  
 36.64      .70      35.94

The last assigned road number is 96.

WOODRUFF