

STATE HIGHWAY COMM. OF WISCONSIN
TOWN PLAT RECORD

RETURN THIS PLAT

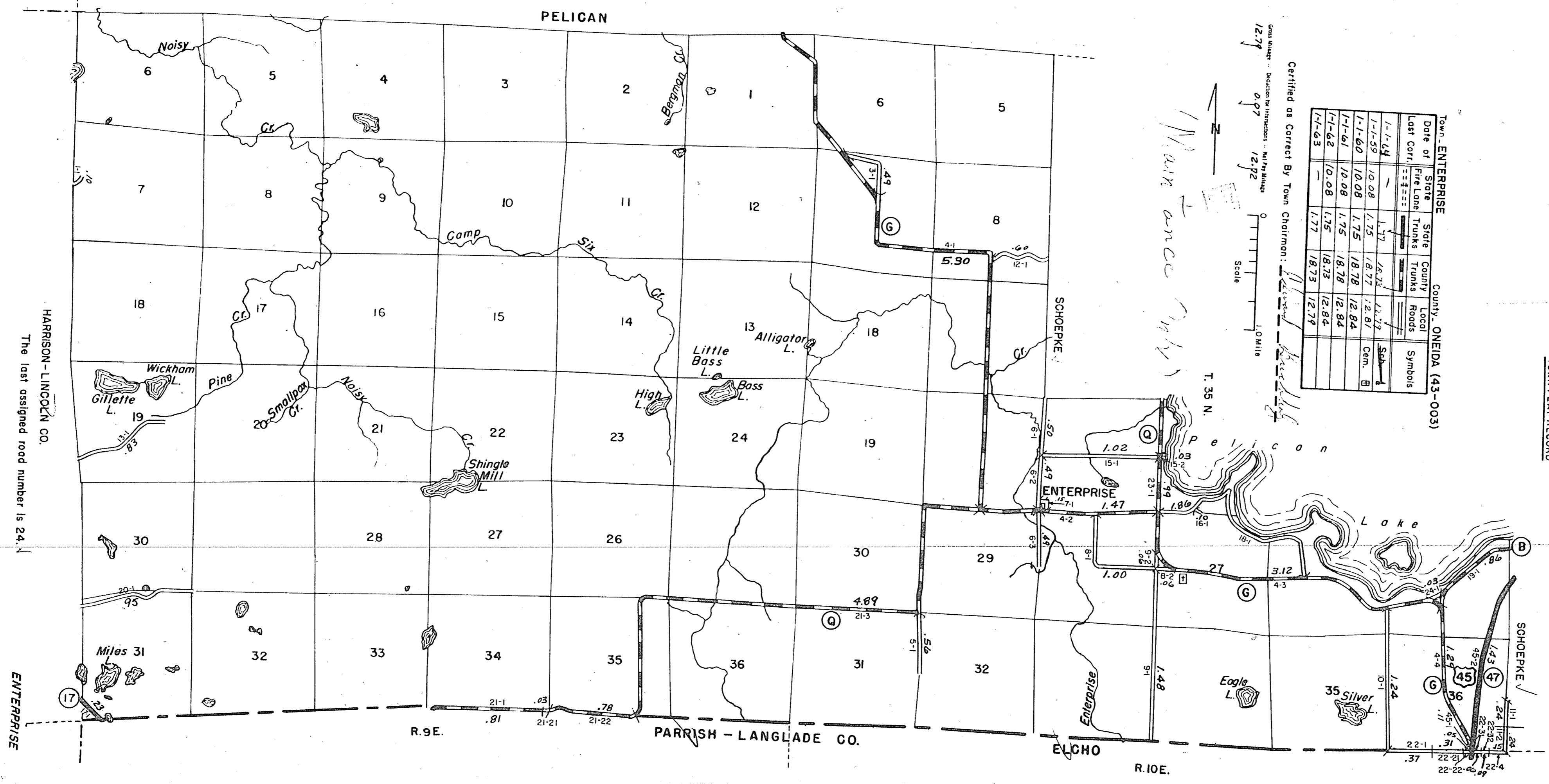
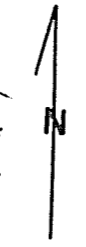
3-20

Town, ENTERPRISE County, ONEIDA (43-003)

Date of Last Conf.	State Fire-Lane Trucks	County Trucks	Local Roads	Local Symbols
1-1-64	1.77	1.75	1.75	1.75
1-1-59	1.75	1.75	1.75	1.75
1-1-60	1.75	1.75	1.75	1.75
1-1-61	1.75	1.75	1.75	1.75
1-1-62	1.75	1.75	1.75	1.75
1-1-63	1.75	1.75	1.75	1.75

Certified as Correct By Town Chairman: _____

Scale 0 1.0 Mile
12.79 0.97 12.92



HARRISON - LINCOLN CO.
The last assigned road number is 24.

ENTERPRISE

R. 9E.

PARRISH - LANGLADE CO.

ELCHO

R. 10E.