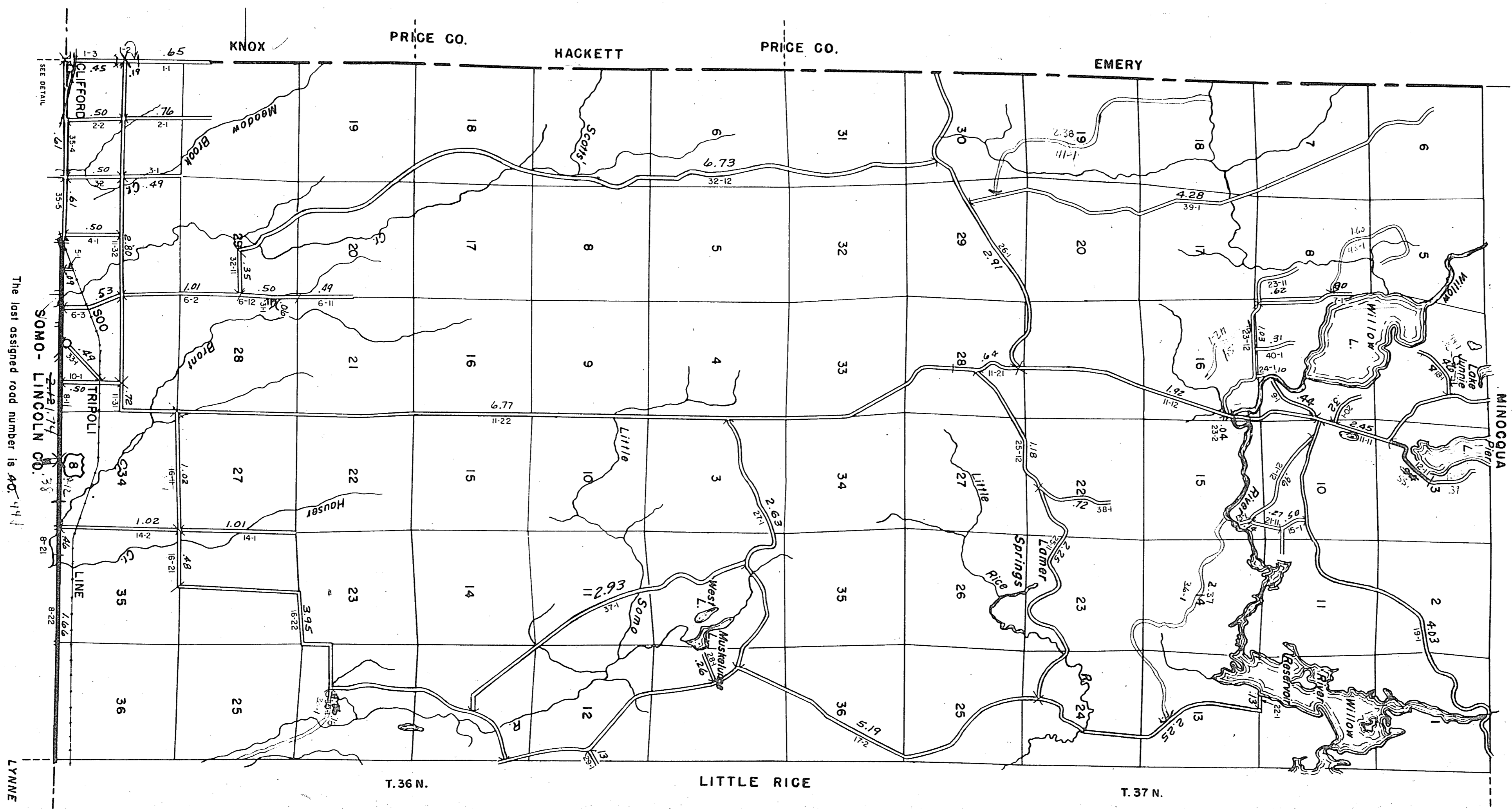
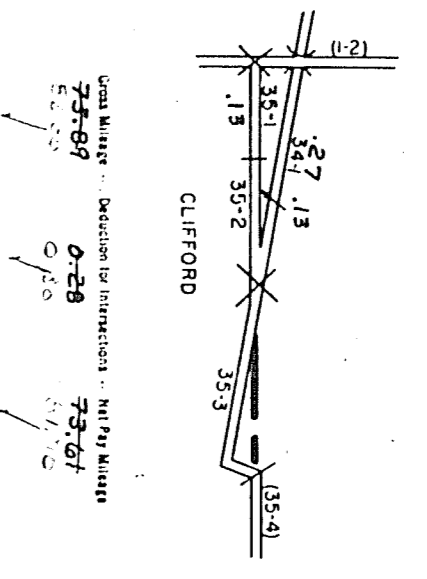
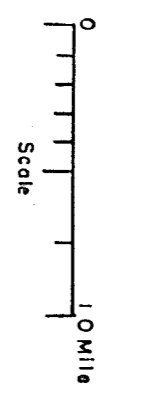


RETURN THIS PLAT

STATE HIGHWAY COMM. OF WISCONSIN
TOWN PLAT RECORD
County - ONEIDA (43-007)

Date of Last Cert.	State Trunks	County Roads	Local Roads	Symbol
1-1-14	2 1/2	2	3	Symbol A
1-1-39	2 1/2	2	4.9 20	Symbol B
1-1-60	2 1/2	2	73.21	Symbol C
1-1-61	2 1/2	2	73.77	Symbol D
1-1-62	2 1/2	2	73.77	Symbol E
1-1-63	2 1/2	2	73.87	Symbol F

Certified as Correct By Town Chairman: Walter Stollery
R. 4 E.



The last assigned road number is 40-144