

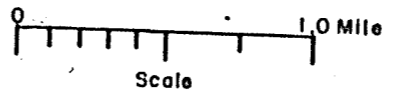
STATE HIGHWAY COMM. OF WISCONSIN  
TOWN PLAT RECORD

**RETURN THIS PLAT**

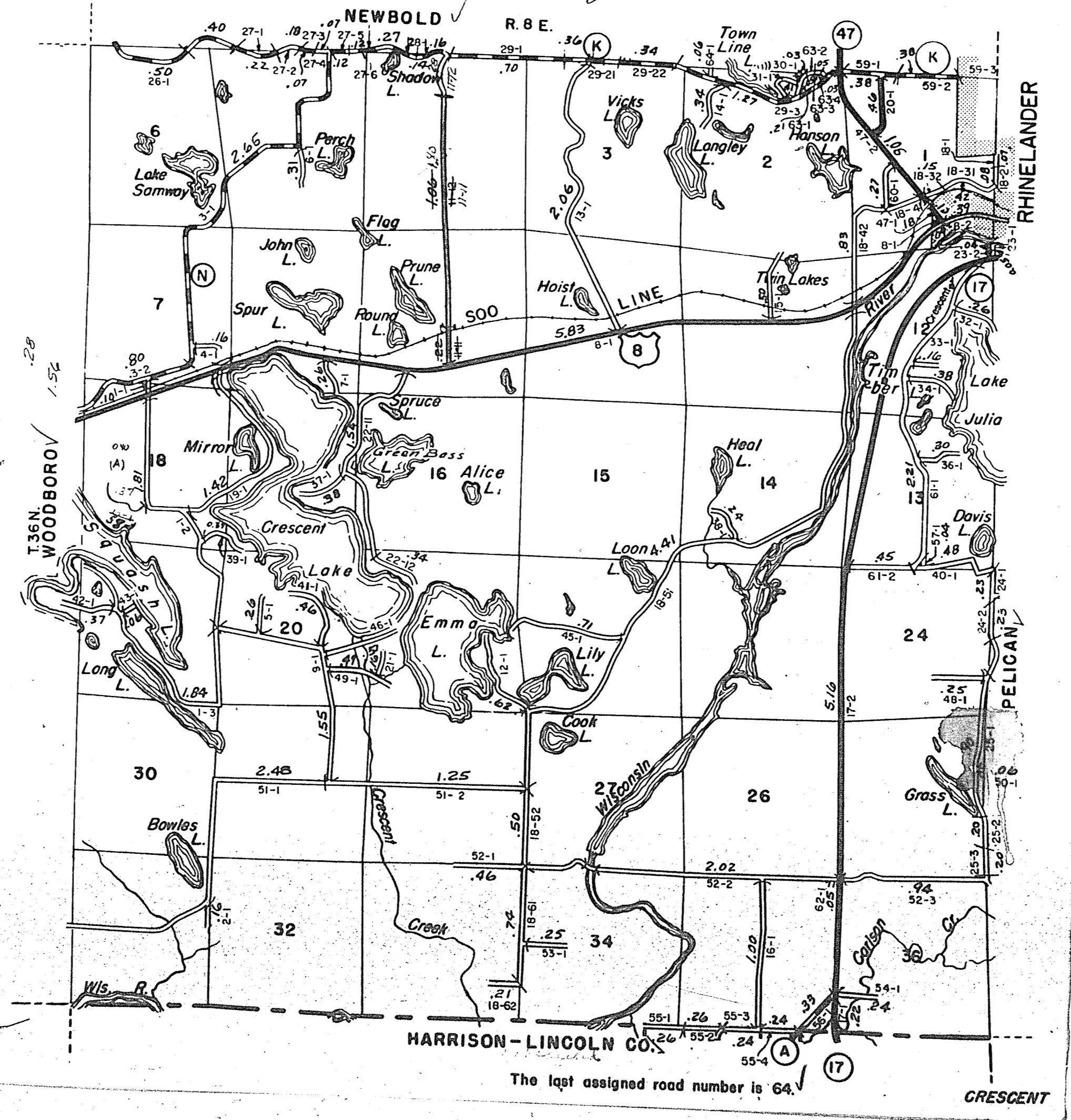
Town...CRESCENT County...ONEIDA (43-002)

Date of Last Corr.	State Trunks	County Trunks	Local Roads	Symbols
1-1-64	12.27	7.18	43.29	Sch. 4
1-1-55	12.27	7.18	43.29	Cem. 0
1-1-60	13.11	6.86	43.14	
1-1-61	13.11	7.29	42.93	
1-1-62	13.11	7.29	42.93	
1-1-63	12.27	7.42	42.55	

Gross Mileage 43.27  
 Deduction for Intersections 0.37  
 Net Pay Mileage 42.90



Certified as Correct By Town Chairman: *J. H. ...*



The last assigned road number is 64.

CRESCENT