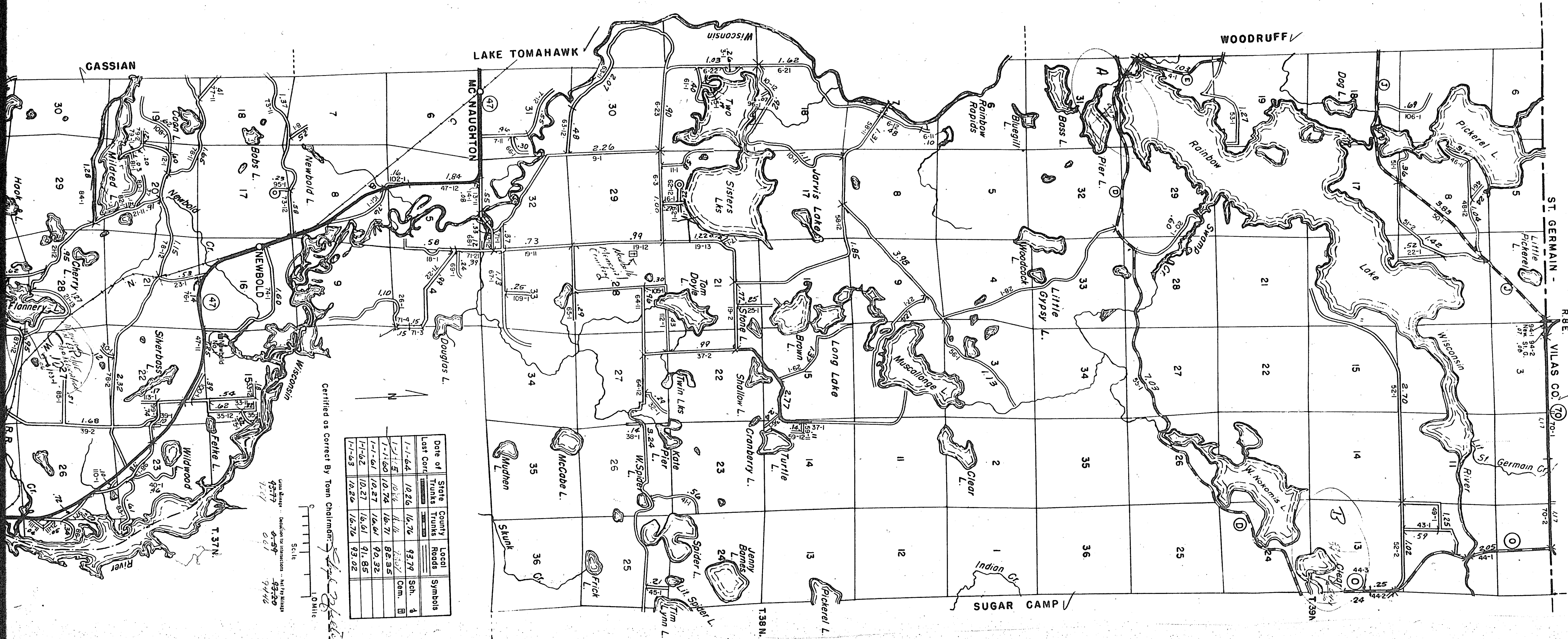


STATE HIGHWAY COMM. OF WISCONSIN
TOWN PLAT RECORD
TOWN - NEWBOLD
COUNTY - ONEIDA (43-010)

RETURN THIS PLAT

ST. GERMAIN -
R. R. E.
VILAS CO. 79



Date of Last Cor'd	State	County	Trunks	Local	Roads	Local	Symbol
1-1-64	10.26	16.76			43.79		Sch. A
1-1-64	10.26	16.76			43.79		Sch. B
1-1-60	10.74	16.71			82.95		Com. B
1-1-64	10.27	16.61			90.32		
1-1-62	10.27	16.61			91.85		
1-1-63	10.20	16.70			93.02		

Certified as correct By Town Chairman: *[Signature]*

Scale: 1" = 100 Feet
 1" = 100 Feet
 1" = 100 Feet

Used Herein: 43779
 43779
 061
 9446

Division of Information - Not For Sale
 061
 9446